



Cooperative Connections



Legislative Voices

Page 8

Outlet for Savings

Page 12

Take time this Christmas season to enjoy A Genuine Experience



Tim McCarthy, GM/CEO

tim.mccarthy@siouxvalleyenergy.com

I'm not sure why but Christmas has started to stir up a lot of emotions in me, especially now that I have surpassed the half century mark. I think back to when I was a kid and it was all so easy. My family lived in a small little house in Illinois. Houses back then were tiny -- probably under 1,000 square feet but at the time I thought we had plenty of room.

My parents bought me presents just like any other child, but I can't recall what those gifts were. I imagine they were toys that broke a few months after receiving them. I've done the same for my kids...all the electronics and talking bears I bought for them eventually wear out. Those gifts never last because they are just "things". I have come to realize that what I really craved at Christmas and felt sheer exhilaration for was a genuine experience. Genuine experiences last—they create memories that you keep forever.

The most genuine experience I can remember as a child was the year that I had the flu during Christmas. You wouldn't think being sick would be described as a genuine experience, but to me... it was. Each year Santa would make a visit to the town hall. All the kids would line up and wait their turn to talk to the "big man" responsible for the toys and treats that were delivered to us each year. It was an important event for the entire community and especially for the children. Unfortunately, I was so sick that I could not attend. For those of you with kids, you can only imagine the crushing realization a child would have knowing that Santa may not receive their Christmas wish list. So, there I lay on my parents' couch with aching bones, cough and a chill along with a deep disappointment and sadness that I would not get to visit Santa.

That's when I heard a knock on the door. My mom answered and in walked Santa. I specifically remember the feeling of joy erasing the physical symptoms I had at the time. It was the most genuine experience I had as a child because it felt magical! How did Santa know where to find me? I later learned that my father had arranged that special visit because of my sickness and inability to attend the community event. My dad wanted to make my Christmas a special one. Maybe deep down he knew in the coming years that I would need that genuine experience...an experience that happened because of my father.

A few years later my dad fell ill and died when I was age 15. I no longer had any of the Christmas gifts that I had gotten from him because they were just "things" and "things" break and fade away. I did, however, have the genuine experience that he gave me. For that I am forever grateful. I carry that experience with me each year and it keeps the memory of my father close.

So, my challenge to you during this Christmas season is to refocus and reaffirm to your family or friends the importance of a genuine experience. That's the stuff that can never be replaced and will stay alive forever. I know as an electric cooperative we sell electricity, but I encourage you to unplug and spend time with those you love because in the end that's all you really have.

Merry Christmas and Happy New Year.

Energy Efficiency Tip of the Month



Be merry and bright, but don't let your holiday lights shine all night. Save money on your electric bill by installing a light timer for your decked out home. It can help lower your electric bill and reduce energy consumption. Use a manual timer plugged into an electrical outlet to automatically turn lights on and off as scheduled.

Source: U.S. Department of Energy

Sioux Valley Energy

Cooperative Connections

(USPS No. 497-440)

General Manager/CEO: Tim McCarthy

Editor: Carrie Vugteveen

Board of Directors

President:

Allan Weinacht, Colton, S.D.

Vice President:

Gary Fish, Brandon, S.D.

Secretary: Allan Kooima, Volga, S.D.

Treasurer: Arlyn Zylstra, Jasper, Minn.

Directors:

Henning Hansen, Elkton, S.D.

Mark Rogen, Garretson, S.D.

Dan Leuthold, Ellsworth, Minn.

Bruce Martinson, Jasper, Minn.

Gregg Johnson, Pipestone, Minn.

Rodney DeMent, Humboldt, S.D.

Dave Daniel, Wentworth, S.D.

SIoux VALLEY ENERGY COOPERATIVE CONNECTIONS is published monthly by Sioux Valley Southwestern Electric Cooperative, Inc., PO Box 216, Junction Hwy 34 & 77, Colman, SD 57017, for its members. Customers subscribe to the publication as part of their electric cooperative membership. The purpose of Sioux Valley Energy Cooperative Connections is to provide reliable, helpful information to Sioux Valley Energy customers on matters pertaining to electric cooperatives and better living.

Subscription information: Electric cooperative members devote not more than 50 cents from their monthly electric payments for a subscription. Non-member subscriptions are available for \$12 annually. Periodicals Postage Paid at Colman, SD 57017 and at additional mailing offices.

POSTMASTER: Send address changes to:
PO Box 216, Colman, SD 57017.

How to contact us:

Phone: 1-800-234-1960

e-mail: sve@siouxvalleyenergy.com

Website: www.siouxvalleyenergy.com

In accordance with Federal civil rights law and U.S. Department of Agriculture (USDA) civil rights regulations and policies, the USDA, its Agencies, offices, and employees, and institutions participating in or administering USDA programs are prohibited from discriminating based on race, color, national origin, religion, sex, gender identity (including gender expression) sexual orientation, disability, age, marital status, family/parental status, income derived from a public assistance program, political beliefs, or reprisal or retaliation for prior civil rights activity, in any program or activity conducted or funded by USDA (not all bases apply to all programs). Remedies and complaint filing deadlines vary by program or incident.

Persons with disabilities who require alternative means of communication for program information (e.g., Braille, large print, audiotape, American Sign Language, etc.) should contact the responsible Agency or USDA's TARGET Center at (202) 720-2600 (voice and TTY) or contact USDA through the Federal Relay Service at (800) 877-8339. Additionally, program information may be made available in languages other than English. To file a program discrimination complaint, complete the USDA Program Discrimination Complaint Form, AD-3027, found online at How to File a Program Discrimination Complaint and at any USDA office or write a letter addressed to USDA and provide in the letter all of the information requested in the form. To request a copy of the complaint form, call (866) 632-9992. Submit your completed form or letter to USDA by: (1) mail: U.S. Department of Agriculture, Office of the Assistant Secretary for Civil Rights, 1400 Independence Avenue, SW, Washington, D.C. 20250-9410; (2) fax: (202) 690-7442; or (3) email: program.intake@usda.gov.

Sioux Valley Energy is an equal opportunity provider and employer.

SCHOLARSHIPS

SVE offering \$16,000 in Scholarships

Sioux Valley Energy is offering \$16,000 worth of scholarships to eligible graduating high school seniors or first time attendees at an institution of higher education. The application deadline is 4:30 p.m. on Friday, January 18, 2019.

Applications will be judged on the basis of grades, ACT or SAT test scores (not required if attending a technical school), work experience, school activities, volunteer community service and an essay question.

The majority of the scholarship funding comes from Operation Roundup® funds, with additional monies from Basin Electric Power Cooperative and L&O Power Cooperative.

To be eligible you must:

- Be a graduating high school senior or first-time attendee at an institution of higher education.
- Plan to be a full-time student in an accredited college or vocational-technical school this fall.
- Be a child of a Sioux Valley Energy customer.
- Have a 3.0 or higher cumulative GPA.
- Provide a written recommendation from a teacher, administrator or counselor.
- One winner per family/per year.

Applications are available from your school counselor, from any Sioux Valley Energy service center (in Colman, Pipestone and Brandon), and on the web at: <https://www.siouxvalleyenergy.com/my-community/scholarship-program>.

Sign Up Through SmartHub to Receive Outage Notifications

Log on to www.siouxvalleyenergy.com and click on **'Sioux Valley Energy Member Login'** on the homepage (as shown to the right).

Register as a new user. You will have to provide the following information: account number, last name or business name, last four digits of SSN or federal tax ID and E-mail address.

Once you are registered, click on **'Manage Contacts'** to add your cell phone number for text messages and/or email address. After you have added your contact information, click on the **'Notifications'** button and choose **'Manage Notifications'** and then choose **'Service'**. At that point you can determine if you would like

a text and/or email for outage and restoration notifications. If you have any questions, please contact the Sioux Valley Energy customer service department.



Generator Safety

Portable generators can provide a good, temporary source of power during electrical outages, but can become deadly if improperly installed or operated.

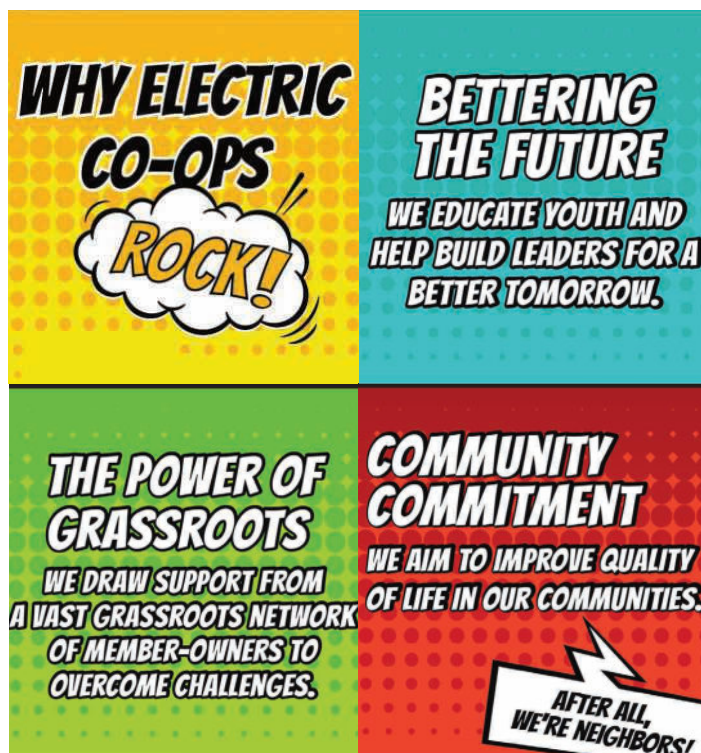
Generator Installation Safety Tips

- The Electrical Safety Foundation International (ESFI) strongly recommends that a licensed electrician install home generators to ensure they meet all local electrical codes.
- Do not connect generators directly to the household wiring without an appropriate transfer switch installed. Power from generators connected directly to household wiring can backfeed along power lines and electrocute anyone coming in contact with them, including utility lineworkers making repairs.
- Make sure your generator is properly grounded.
- Use a ground fault circuit interrupter (GFCI) to prevent electrocutions and electrical shock injuries. Portable GFCIs require no tools to install and are available at prices ranging from \$12 to \$30.

Using Your Generator Safely

- Make sure your home is equipped with a battery-operated or battery back-up carbon monoxide alarm.
- Never operate a generator inside your home or in other enclosed or partially-enclosed spaces. Generators can very quickly produce high levels of carbon monoxide (CO), which can be deadly.
- Opening doors and windows or operating fans to attempt to ventilate a generator will not prevent carbon monoxide build-up in the home. Even with a working CO alarm, you should never use a gasoline-powered generator inside your home or in a garage.
- Position the generator outside the home and away from doors, windows and vents that can allow CO to enter the home.
- Carbon monoxide is the “silent killer.” Get to fresh air right away if you feel dizzy or weak.
- Do not overload the generator.
- Plug appliances directly into the generator or use a heavy-duty, outdoor rated extension cord.
- Make sure extension cords used with generators are rated for the load and have three-pronged plugs. They should be inspected for damage, such as cuts and/or worn insulation before use.
- Turn off all appliances powered by the generator before shutting down the generator.
- Make sure fuel for the generator is stored safely, away from living areas, in properly labeled containers, and away from fuel-burning appliances. Before re-fueling, always turn the generator off and let it cool down.
- Keep children away from portable generators at all times.
- A generator is a temporary power source. Use a generator only when necessary to power essential equipment or appliances.

Source:esfi.org



KIDS CORNER SAFETY POSTER



“Never fly near power lines.”

Cooper VanderWal, 8 years old

Cooper is the son of Thomas and Katy VanderWal, Brookings, S.D. They are members of Sioux Valley Energy, Colman, S.D.

Kids, send your drawing with an electrical safety tip to your local electric cooperative (address found on Page 3). If your poster is published, you'll receive a prize. All entries must include your name, age, mailing address and the names of your parents. Colored drawings are encouraged.

Super Soups

Male Chauvinist Chili

6 slices bacon	1 tsp. dry hot mustard
10 oz. hot Italian sausage	1-1/2 tsp. chili pepper
10 oz. lean ground beef	1 tsp. celery seeds
1 large Spanish onion, cut in chunks	1/2 tsp. salt
1 bell pepper, cut in large pieces	1-1/2 tsp. fresh black pepper
2 cloves garlic, minced	6 cups Italian tomatoes, mashed with liquid
1/2 jalapeno pepper, diced (optional)	1 (15 oz.) can pinto beans, undrained
1 cup dark red wine	1 (15 oz.) can kidney beans, undrained
1/2 cup Worcestershire sauce	1 (15 oz.) can garbanzo beans, undrained

Brown bacon; drain, crumble and set aside. Brown sausage and ground beef separately; set aside. In a Dutch oven, cook onion, bell pepper, garlic and jalapeno pepper over low heat 2 to 3 minutes. Stir in wine and Worcestershire sauce; simmer uncovered for 10 minutes. Add mustard, chili pepper, celery seeds, salt and pepper; simmer 10 minutes. Add tomatoes and meats to onion mixture; heat to boiling. Reduce heat, cover and simmer 30 minutes, stirring occasionally. Stir in beans; heat to boiling; Reduce heat, cover and simmer 1 hour, stirring occasionally.

Ruth Schilberg, Viborg

Bacon Potato Chowder

8 slices bacon, cut-up	Salt and pepper to taste
1 cup chopped onion	1/2 cup sour cream
1 cup chopped celery	1-1/2 cups milk
2 medium potatoes, peeled and diced	1 (10 oz.) can cream of mushroom soup
1 cup chicken broth	

In a saucepan, cook bacon, onion and celery until bacon is lightly browned and vegetables are tender. Pour off drippings. Add diced potatoes, broth, salt and pepper. Cover; simmer 12 to 15 minutes until potatoes are done. Stir in soup, sour cream and milk; heat through. Serves 6.

Mary Jessen, Holabird

Leftover Turkey-Sage Noodle Soup

2 tsp. oil	1-1/2 tsp. sage, rubbed
1 cup chopped onion	1/2 tsp. thyme leaves
1 (32 oz.) container Kitchen Basics® Original Chicken or Turkey Stock	2 bay leaves
2 cups frozen peas and carrots	1 cup medium egg noodles
	2 cups chopped roast turkey

Heat oil in large saucepan on medium heat. Add onion; cook and stir 5 minutes or until softened. Add stock, peas and carrots, sage, thyme and bay leaves; bring to boil. Stir in noodles; cover and cook 10 minutes or until noodles are almost tender. Add turkey; cook 5 to 10 minutes or until noodles are tender and turkey is heated through. Remove bay leaves before serving. Makes 5 1-cup servings.

Nutritional Information Per Serving: Calories 209, Total Fat 5g, Protein 24g, Cholesterol 69mg, Sodium 444mg, Carbohydrates 17g, Fiber 3g

Pictured, Cooperative Connections

Dill Pickle Soup

5-1/2 cups chicken broth	1/2 cup flour
2 lbs. potatoes, peeled and diced	1 cup sour cream or Greek yogurt
2 cups chopped carrots	1/4 cup water
1/2 cup unsalted butter	2 cups pickle juice
1 cup diced dill pickles	Salt to taste
1/2 cup cooked, diced chicken	1/2 tsp. pepper

Bring chicken broth, potatoes, carrots and butter to a boil. Continue until potatoes and carrots are tender. Add pickles and diced chicken; continue to simmer. In a small bowl, whisk together flour, sour cream and water. Quickly stir into soup to thicken. Add pickle juice, salt and pepper. Continue cooking an additional 5 minutes.

Catherine Harts, Mission Hill, SD

Please send your favorite brunch, seafood, appetizer/ beverage recipes to your local electric cooperative (address found on Page 3). Each recipe printed will be entered into a drawing for a prize in June 2019. All entries must include your name, mailing address, telephone number and cooperative name.

SVE Returns \$1.8M to Members

Members of Sioux Valley Energy collectively own the Cooperative and enjoy several benefits unique to cooperatives. Because SVE is a not-for-profit cooperative, owned by its members, it doesn't technically earn profits. If revenues exceed expenses, the co-op earns "margins." Each year, margins are allocated to members, as capital credits, in proportion to the amount they are billed for electricity during that year.

These "capital credits" reflect ownership in SVE but are not automatically returned to you. The Cooperative uses capital credits to fund operating activities and reduce borrowing, with the intent of paying this capital to you in later years. After reviewing the Cooperative's finances each year, the Board of Directors determines whether a portion of capital credits can be retired, or paid, to members. The Board also evaluates the method, basis, priority, and timing of all capital credit retirements. Because capital credits are based on the dollar amount of electricity a member purchases, the retirement amount will vary from member to member and from year to year.

Most recently, the Board approved a capital credit retirement of \$1.8-Million. The Cooperative will be retiring a portion of the 1993, 1994 and 2017 allocations. Individuals and organizations that were members of SVE in those years will receive a portion of their capital credits. The amount of each allocation and retirement is based on how much individual members paid the co-op for electric service during that period.

Capital Credit FAQs

How are capital credits calculated? The amount of capital credits you earn in a given year is based on the amount of capital you contribute to the Cooperative through payment of your monthly electric bills and the amount of margins realized by the Cooperative.

Do I have to be a member for an entire year to earn capital credits? Capital credits are calculated based on the amount you are billed for electricity. If you are billed for service for even one month, you will accumulate some capital credits if SVE earned margins during the year.

What do I have to do to start accumulating capital credits? Your membership in SVE automatically activates your capital credit account. SVE allocates and retires capital credits for you and provides you with notice of these processes.

What's the difference between allocated and retired capital credits?

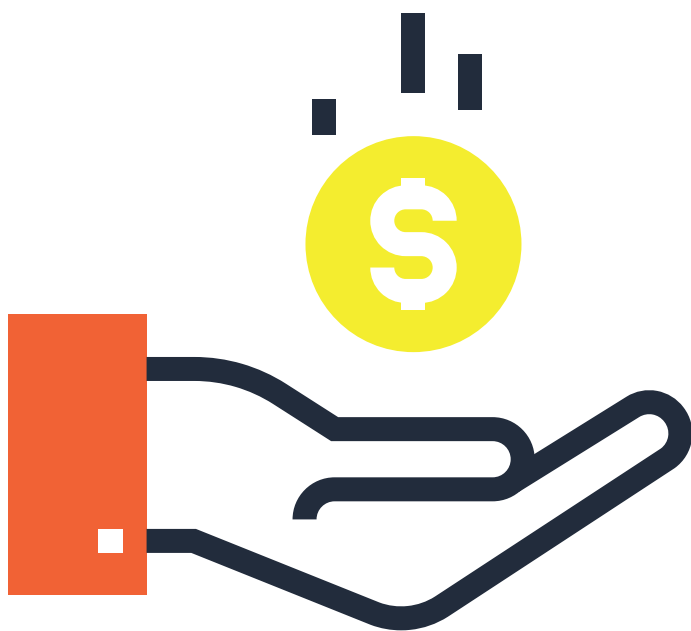
Allocated capital credits appear as an entry on the permanent financial records of the Cooperative and reflect your ownership in SVE. When capital credits are retired, a check or bill credit is issued to you, and your ownership in the Cooperative is reduced. After reviewing the Cooperative's finances, the Board of Directors determines the method, basis, priority, and timing of all capital credit retirements.


Can I receive my cumulative capital credits allocation now?

Cumulative capital credits allocations are simply a record of your ownership in the Cooperative. Because the capital is not held in an account and is reinvested to support operating activities, the entire balance cannot be retired to you at once.

Can I use the capital credits that have been allocated to me to pay my electric bill?

Because capital credits have no cash value until the Board of Directors calls for the retirement of a previous year's allocated capital credits, they can't be used to pay your current bill. Your electric bill is due now, but you may not be entitled to receive your capital credits for many years.





Sioux Valley Energy
PO Box 216
Colman, SD 57017

December Electric Bill
DATE

TO THE ORDER OF: *You! The Member of Sioux Valley Energy!* \$ **BILL CREDIT**

As an owner of Sioux Valley Energy, you will receive a *Capital Credit* refund on this month's electric bill. _____ DOLLARS

MEMO Capital credit refund for electricity purchased in the years 1993, 1994 and 2017.

Sioux Valley Energy

THIS IS NOT A CHECK. THIS IS CAPITAL CREDIT REFUND NOTICE. DO NOT CASH. CREDIT IS SHOWN ON DECEMBER BILL.

What happens to my capital credits when I leave the Co-op?

Your capital credits remain on the books in your name and account number until they are retired. Because payments are made years after capital credits have been allocated, you should be sure that we always have your current mailing address. We may retire capital credits, outside the normal schedule for retirements, when the Co-op receives proper notification that a member or former member is deceased. Contact a customer service representative at 1-800-234-1960 to update your address.

When will my capital credits be retired? When determined by the Board of Directors, capital credits will be retired to the following groups:

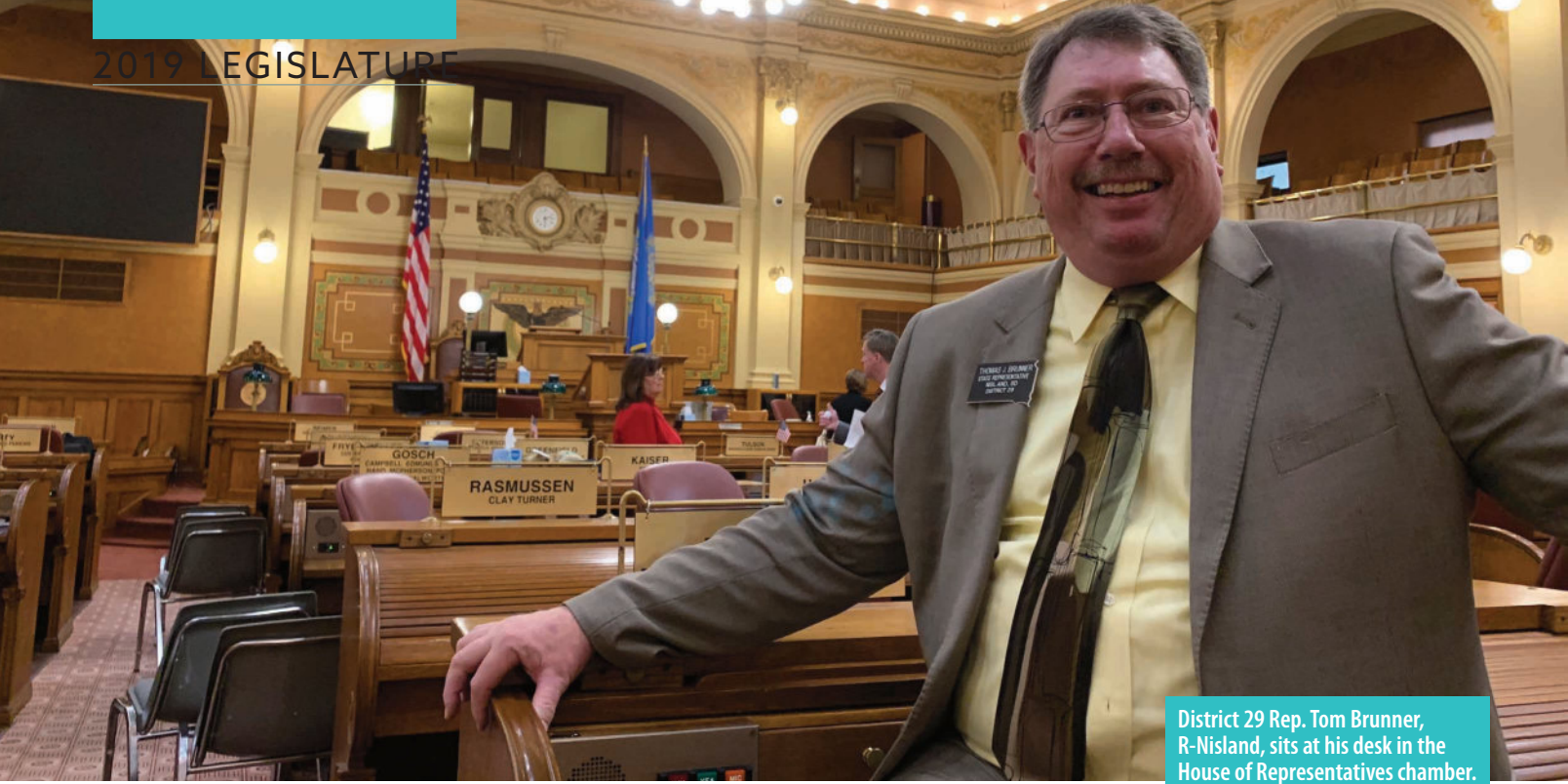
- The estates of deceased members.
- The oldest outstanding year(s) that have not yet been retired.
- The most recent year(s) that have been allocated.

I am no longer with the Co-op and accumulated capital credits. My retirement is less than \$25. What happens to my capital credits? In order to limit the administrative costs related to retiring capital credits, SVE does not automatically send checks to former members with a capital credit retirement of less than \$25. Those credits will remain on SVE's books as unissued capital credits. Former members with additional allocations will receive a capital credit check once the allocation increases the retirement total to \$25 or greater.

What will happen to my capital credits if I pass away before they are eligible for retirement? When SVE receives proper documentation to settle the estate of a current or former member who has passed away, the Co-op will distribute capital credits in accordance with our Capital Credits Policy. SVE discounts the value of these credits using the present value of each year's retirement compared to the expected payout of 25 years from when the capital credits were allocated.

My capital credits retirement is larger than my December bill. Do I still get those credits? Yes, if your capital credit retirement bill credit is larger than the total of your December bill, any remaining credits will roll over onto your January bill.

Can I receive my retirement as a check instead of a bill credit? No, all current members are receiving their retirement as bill credits. SVE is committed to pursuing the most cost-effective business practices. The Cooperative saves a considerable amount of money by retiring capital credits as bill credits as opposed to the expense of printing and mailing checks to more than 25,000 current members.



District 29 Rep. Tom Brunner, R-Nisland, sits at his desk in the House of Representatives chamber.

UNDER THE DOME

Co-op Leaders Elected to State Legislature

Brenda Kleinjan

editor@sdrea.coop

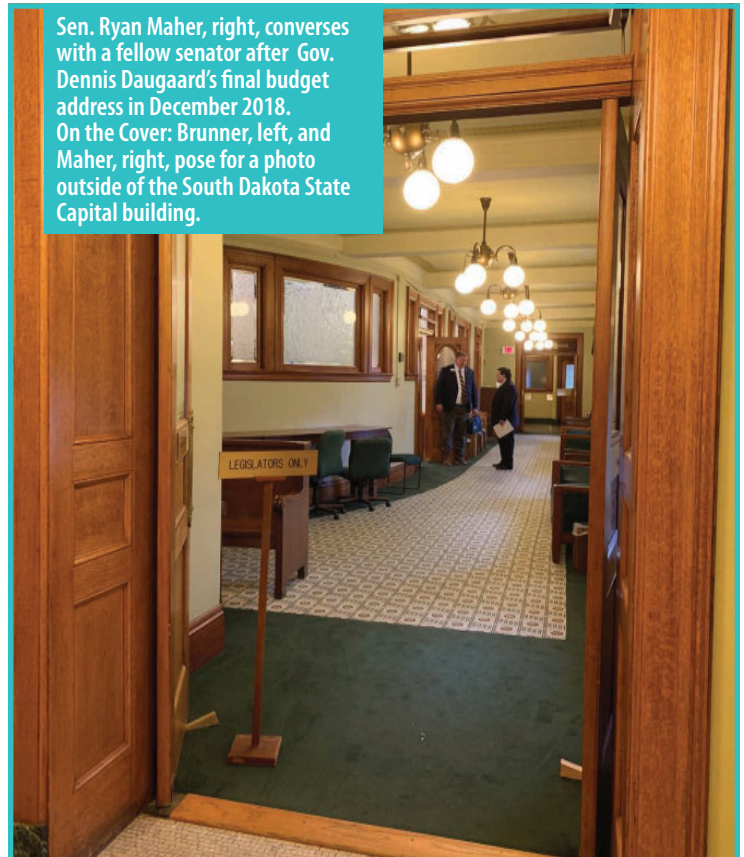
As legislators head back to Pierre Jan. 8 for the start of the 94th South Dakota Legislative Session, among the body will be a long-time electric cooperative director.

Rep. Tom Brunner, a farmer from Nisland, S.D., returns to the South Dakota House of Representatives after being re-elected to serve District 29, which encompasses portions of Butte, Meade and Pennington counties in western South Dakota. Brunner is entering his third term, having won elections in 2014 and 2016. The Republican had previously served in the House from 2005-2012, including a stint as a Majority Whip in 2007-08.

“I serve because I think it’s my way of giving back to the community. I represent a lot of people who can’t take the time or feel intimidated by speaking out in public. I hope I always bring an opinion that would make my constituents proud to have me represent them,” said Brunner.

Brunner’s service to community extends beyond the hallways of the South Dakota Capitol building. Since 1991, he has served on the Butte Electric Cooperative board of directors in Newell, S.D.

Sen. Ryan Maher, right, converses with a fellow senator after Gov. Dennis Daugaard’s final budget address in December 2018. On the Cover: Brunner, left, and Maher, right, pose for a photo outside of the South Dakota State Capital building.



Minnesota's 91st Legislative Session to Start Jan. 8

On Jan. 8, Minnesota's elected leaders head to St. Paul for the 91st Session of the Minnesota Legislature. Coverage of the session starts at 8 a.m. Tuesday on the Minnesota Channel, which is carried by Minnesota's six independent public television stations.

Legislative television programming is produced and created by the Minnesota House of Representatives and the Minnesota Senate.

The Minnesota Legislature has 67 senators and 134 representatives for a total of 201 members. The size of the Legislature has changed over time. Since statehood the lowest number of members was 63 and the highest was 202.



Minnesota State Capitol building.

According to Minnesota Statute 3.011, the legislature meets at the seat of government on the first Tuesday after the first Monday in January of each odd-numbered year. It shall also meet when called by the governor to meet in special session. In the even numbered years, it convenes on a date set by joint agreement of both bodies. The state constitution limits the Legislature to meeting 120 legislative days during each biennium. In addition, the Legislature may not meet in regular session after the first Monday following the third Saturday in May of any year.

Contact Minnesota Legislators

For contact information on Minnesota House members, visit:

<https://www.house.leg.state.mn.us/members/hmem.asp>

For contact information on Minnesota Senators, visit:

<http://www.senate.leg.state.mn.us/members/index.php?ls=%20-%20header>

And, Brunner has the distinction of being the longest-serving member of the South Dakota Rural Electric Association board of directors, having represented Butte Electric on the SDREA board since 1994. Brunner was the ninth individual to serve as the SDREA board president in the association's 77 year history, serving from 2001 to 2006.

On the other side of the Capitol building, Sen. Ryan Maher of Isabel is returning to the Senate representing District 28 in northwestern South Dakota. District 28 is the state's largest district geographically, extending from the Missouri River to the Montana state line. It includes Harding, Perkins, Corson, Dewey and Ziebach counties and much of northern and western Butte County. Like Brunner, Maher was a familiar face in Pierre prior to his re-election in November. Maher first served in the South Dakota Senate from 2009 to 2014 before returning in 2017. He served as the Republican assistant majority leader in 2018.

The bar and grill owner and insurance agent from Isabel is also a director on his local electric cooperative board. Maher was elected in

2017 to the Timber Lake, S.D.-based Moreau-Grand Electric Cooperative board of directors.

Also on the House side is District 26A Rep. Shawn Bordeaux, D-Mission. Bordeaux, who is the Director of the Institute of Tribal Lands at Sinte Gleska



Rep. Shawn Bordeaux
D-Mission

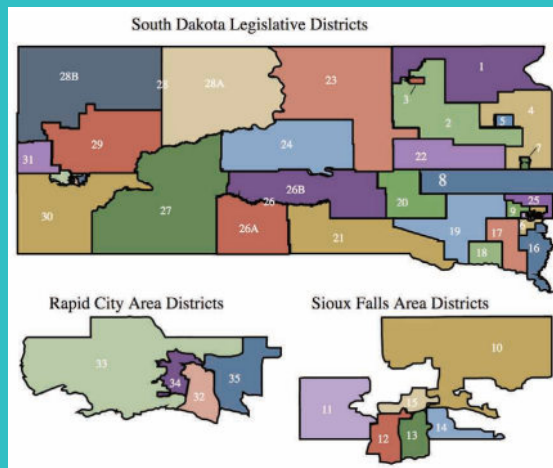
University, serves on the board of directors for Cherry-Todd Electric Cooperative in Mission. This is Bordeaux's third term in the House where he represents Todd and Mellette counties in south central South Dakota.

The South Dakota Legislature is bicameral, consisting of a Senate, comprised of 35 members, and a House of Representatives with 70 members.

The main run of the 40-day legislative session goes through March 13. Lawmakers return to Pierre March 29 to consider gubernatorial vetoes.

South Dakota's Legislature

Each Legislative District in South Dakota is represented in Pierre by two members in the South Dakota House of Representatives and one Senator. (Districts 26 and 28 are split into an A portion and a B portion, with a specific Representative for that area.) Need to contact your legislator while they're in Pierre? Go to <http://sdlegislature.gov/> From there, you can search your Senator or Representatives, see the committees which they are assigned and send them an email. Need to reach them by phone? You can call and leave a message with the senate at 605-773-3821 or with the House of Representatives at 605-773-3851. You can also send a fax to 605-773-6806.



District Vacancies

Hansen and Zylstra to retire from Board

Sioux Valley Energy is recruiting qualified members from the Cooperative's Districts #1 and #10 who are interested and willing to serve on the Board of Directors to fill two vacancies. The term for the incumbent directors, Henning Hansen and Arlyn Zylstra, will expire in 2019 and both have decided to not seek another term on the Board. District #1 and #10 members interested in seeking nomination to the Board must submit a nominating petition. The deadline for submitting petitions for the vacancies can be found below. The Cooperative Bylaws state the qualifications needed to be a director and can be found next to this article.

District No. 1 is made up of those Townships in Brookings County, South Dakota, which lie within Ranges 47, 48 and 49 and Townships 109, 110, 111 and 112; and Range 50 and Townships 111 and 112.

District No. 10 is made up of those Townships in Pipestone County, Minnesota and Rock County, Minnesota, which lie within Range 44, 45, 46 and 47 and Townships 103, 104 and 105.

Interested members are encouraged to contact Amy Voelker, Executive Assistant, at 1-800-234-1960.

Elections will also take place at four other district meetings. Terms expire in 2019 for Gary Fish (District #6), Allan Kooima (District #2), Bruce Martinson (District #3) and Dave Daniel (District #4). Members who are interested in running for the Board of Directors must file a petition. Petitions are available at any Sioux Valley Energy office or at www.siouxvalleyenergy.com.

Each district meeting will include a complimentary meal, a short informational program and a \$25 bill credit per membership which will be awarded at the end of the meeting.

SECTION 5. Qualifications. **Any member shall be eligible to be nominated or elected or to remain a Director, provided that:** (a) They are a natural person receiving electric service from the Cooperative at their primary residence or meet the qualifications for corporate representation; (b) They have the capacity to enter legally binding contracts; (c) They have been and shall remain a resident of the district for which they are or were nominated or elected for at least one (1) year prior to nomination, and continue to reside therein during their entire term as Director; (d) While a Director and during the five (5) years immediately prior to becoming a Director, they have not been convicted of a felony; (e) They or their spouse are not employed by, materially affiliated with or have a material financial interest in any individual or entity which either is: (i) Directly and substantially competing with the Cooperative, or any of its subsidiaries; or (ii) Selling goods and services in substantial quantity to the Cooperative or its subsidiaries; or having sold goods or services in substantial quantity to the Cooperative or its subsidiaries within three (3) years of seeking nomination. (iii) Possessing a substantial conflict of interest with the Cooperative or any of its subsidiaries; or (iv) They are not in any way employed by the Cooperative or any of its subsidiaries nor have they been employed by the Cooperative or its subsidiaries within three (3) years of the directors nomination, and (v) They are not a close relative of any existing Director or existing employee of the Cooperative or its subsidiaries. For the purpose of this section only "close relative" shall mean a person who is either a child, grandchild, stepchild, parent, grandparent, stepparent, brother or sister, by blood or in-law, of the principal. (f) A designated representative of any non-human member such as a corporation, shall, notwithstanding that he or she does not receive service from the Cooperative at their primary residential abode, be eligible to become a Director, if: 1) He or she is an officer of said non-human member; and 2) He or she is in substantial permanent occupancy, direction or use of the premises served by the Cooperative; and 3) He or she is a permanent year round resident within the district for which the Corporation or non-human member is receiving service, and 4) Otherwise meets the qualifications set forth herein, provided, however, that no more than one (1) such person as the designated representative may serve on the Board at the same time and in the event that he or she should resign or is unwilling to so act, the directorship shall become vacant.

District Meeting Schedule

Meeting Date	Director/District	Town	Location	Petition Deadline
Thursday, February 21	Leuthold (8)	Luverne MN	Grand Prairie Event Center	
Monday, February 25	Fish (6) & Rogen (6)	Brandon SD	Brandon Valley High School	December 27, 2018 (3 yr. term)
Thursday, February 28	Johnson (9)	Pipestone MN	Pipestone High School	
Monday, March 4	Weinacht (5)	Colton SD	Tri-Valley School	
Tuesday, March 19	Hansen (1)	Elkton SD	Elkton Community Center	January 18, 2019 (2 yr. term)
Thursday, March 21	Zylstra (10)	Edgerton MN	Edgerton Public School	January 20, 2019 (3 yr. term)
Monday, March 25	Kooima (2)	Volga SD	Sioux Valley School	January 24, 2019 (3 yr. term)
Tuesday, March 26	Martinson (3)	Flandreau SD	William J Janklow Comm. Center	January 25, 2019 (2 yr. term)
Thursday, March 28	DeMent (7)	Hartford SD	West Central School	
Monday, April 1	Daniel (4)	Madison SD	Madison High School Commons	January 31, 2019 (3 yr. term)

Blue Indicates Election Meetings

EmPOWER sets new record

The first session of the 2018-2019 EmPOWER Youth Leadership program was held on November 12th in Brandon. A record number of participants (80 students) took part in the day-long event which featured a dynamic and inspirational speaker, Timothy Alexander. Timothy is a native of Birmingham Alabama and attended Erwin High School where he was ranked the #8 high school football player in the state.

Timothy had the opportunity to play for any college in the country; however, he was involved in a life changing car accident in 2006, leaving him paralyzed from the neck down. From that point on, Timothy was left to find his purpose in life while paralyzed.

Timothy graduated from Erwin in 2007 and attended Wallace State

Community College. After graduating from Wallace State, he enrolled at the University of Alabama at Birmingham (UAB), where he double majored in Criminal Justice and Communication Management. While at UAB, Timothy left a major impact by becoming the first paraplegic to receive a football scholarship.

He not only shared his story but he encouraged the group to be leaders

and have a vision. He shared his motto with the students: "We don't need it to be easy, we just need it to be possible". Tim McCarthy, SVE CEO/General Manager, also provided comments to the students and SVE's Ted Smith led a session about the cooperative model.



An Outlet for Energy Savings

Smart Outlets Offer Savings

Kaley Lockwood

NRECA

These devices afford the same surge protection as their predecessors, but also tie in the “smart” functionality of an internet-connected device.

Does the ebb and flow of your energy bill have you searching for an affordable way to reduce or better control your use? If you answered yes, then look no further because we’re taking a quick dive into a practical and affordable device that allows you to better manage your home’s energy use. We’re talking about energy-saving outlets!

These next-generation devices afford the same surge protection as their predecessors, but also tie in the “smart” functionality of an internet-connected device.

There are several different kinds of energy-saving outlets available, but there are two factors you should consider. First is size; there are many different sizes ranging from a single external outlet to a power strip with multiple sockets. The second thing you’ll want to consider is Wi-Fi connectivity; internet-connected outlets, commonly known as smart plugs, may enable you to fully realize the potential of these energy savings. This is because you’ll have greater remote control of the outlet through your smart phone, tablet or home assistant (like Google Home or Amazon’s Alexa).

You’ll also want to consider where you’ll be

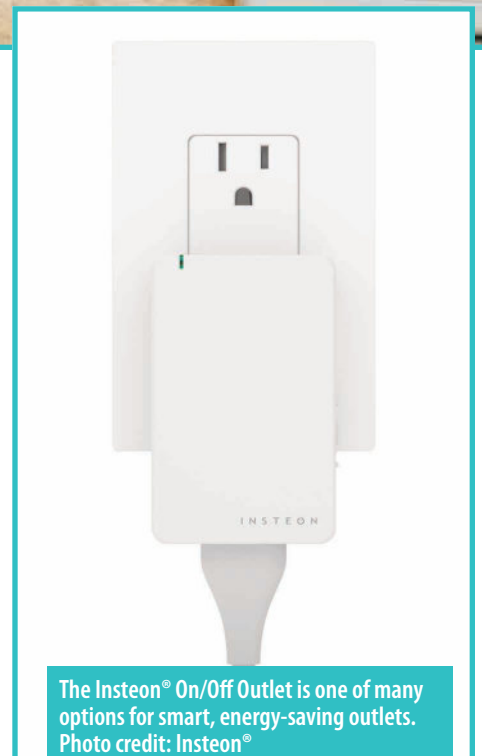


ThinkEco also offers smart, energy-saving outlets. Shown here is the modlet (or modern outlet). Photo credit: ThinkEco

using the energy-saving outlet and what you’ll be using it for. Answering these questions will make it easier to choose the device that works best for you.

With smart plugs or smart power strips, a few clicks and swipes on your smart phone will enable you to fully shut down the electrical currents to your high-powered devices to prevent them from consuming electricity even when switched off. Several devices found inside your home are commonly referred to as “parasitic loads,” “phantom loads” or “energy vampires.” In fact, most entertainment systems consist of several parasitic loads, such as televisions, DVD players and video gaming consoles. These outlets can potentially curb these loads, which can cost the average household an extra \$200 per year.

In addition to preventing unnecessary



The Insteon® On/Off Outlet is one of many options for smart, energy-saving outlets. Photo credit: Insteon®



ThinkEco's modlet (or modern outlet) can be controlled remotely and even adjust to your personal schedule. Photo credit: ThinkEco

Convenience is also a major factor to consider when thinking about your next efficiency upgrade.

energy consumption, these energy-saving outlets are affordable for most folks who are looking to trim their use. The average smart outlet costs around \$10 to \$20 on Amazon.com and has the potential to pay for itself within two years or less depending on how often you use it.

As previously noted, convenience is also a major factor to consider when thinking about your next efficiency upgrade. Smart plugs typically come with simple instructions to download an accompanying app on your smart phone and then connect the plug to your home's Wi-Fi. The convenience in being able to turn the device on and off using your phone cannot be understated. Advanced smart plugs and smart plug apps also have the ability to automate the use with your schedule and even your presence in the home.

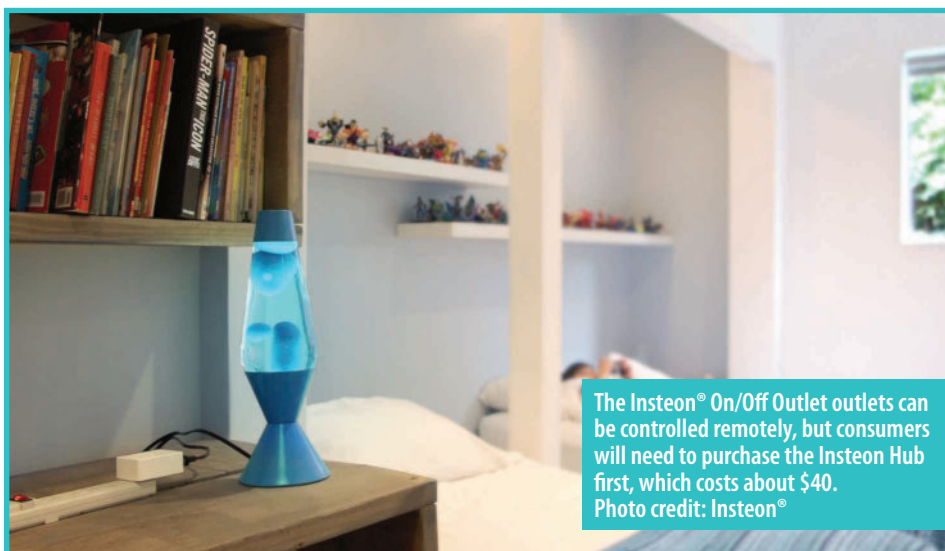
You can also have large-load devices turn off at a set time each night and turn on

every morning when you're ready to use them. If you want to use your television, for example, at a time that's outside of the preset hours, you can easily switch the device on through the smart phone app. Through automation, you're able to power down these energy-intensive devices and prevent unnecessary energy use.

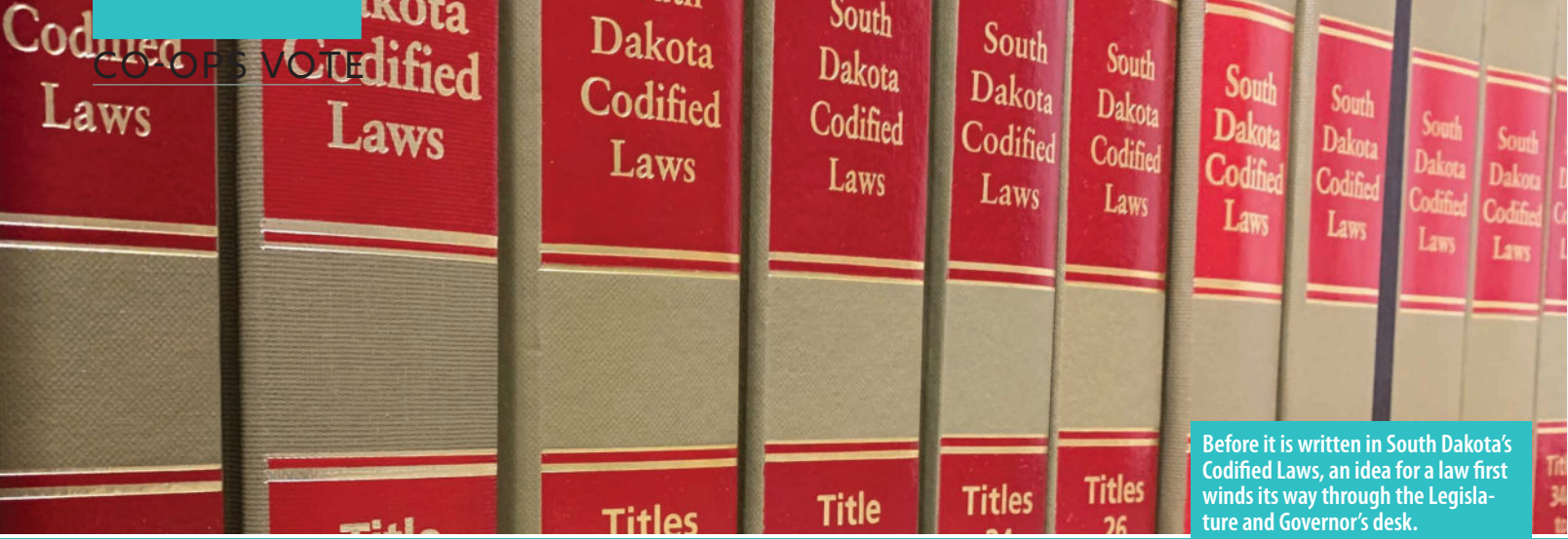
For folks who are looking to optimize their energy use and eliminate vampire loads, smart plugs may be your best option. For others who want more of a hands-off option to save additional dollars, energy-saving outlets and power strips without the Wi-Fi connection may be a better choice.

Either way, energy-saving outlets are just one of many energy efficient options out there and as technology continues to evolve, we'll likely see additional options emerge in the future.

Kaley Lockwood writes on consumer and cooperative affairs for the National Rural Electric Cooperative Association, the national trade association representing more than 900 local electric cooperatives. From growing suburbs to remote farming communities, electric co-ops serve as engines of economic development for 42 million Americans across 56 percent of the nation's landscape.



The Insteon® On/Off Outlet outlets can be controlled remotely, but consumers will need to purchase the Insteon Hub first, which costs about \$40. Photo credit: Insteon®



CO-OPS VOTE

Before it is written in South Dakota's Codified Laws, an idea for a law first winds its way through the Legislature and Governor's desk.

FROM AN IDEA TO LAW

A Legislative Path in the Rushmore State

From the S.D. Legislative Research Council

<http://sdlegislature.gov>

When South Dakota's 105 legislators gather in Pierre Jan. 8, their main objective will be considering, debating and in some cases enacting new laws.

Here is the general path that an idea follows in becoming a law in South Dakota:

Idea

- A bill is simply an idea that someone would like to see become law.
- It could be anything from the penalty for committing a crime to the amount of money that can be spent on a state program.
- The idea can come from any one, but only a State Representative or State Senator can take the idea and guide it to final passage through the State Legislature.

Drafting

- The drafting of the idea into a bill is done by the Legislative Research Council, the permanent, non-partisan staff of the Legislature.
- A bill may be filed by any member of the House or Senate, and generally more than one legislator will sponsor a bill. The legislator whose name appears first on the bill is the "prime sponsor."

Introduction

- A bill is given to the Chief Clerk of the House or the Secretary of the Senate and is assigned a number. If the bill is sponsored by a Senator, it is a Senate Bill. If the bill is sponsored by a Representative, it is a House Bill.
- The bill is given a First Reading in the "House of Origin". The "House of Origin" is the chamber that sponsored the bill.

- At a First Reading the bill's number and title are read aloud.
- The Senate President Pro tempore or Speaker of the House then assigns the bill to a committee.

Committee

- A committee's responsibility is to examine a bill carefully, take testimony for and against the bill, and decide what to do with the bill.
- The committee has the following options:
 - Send the bill to the floor with a "Do Pass" recommendation,
 - Amend,
 - "Table" the bill, which kills the bill, unless the full body orders the committee to send the bill to the floor ("Smoke-Out"), or
 - Defer the bill to the day after the last Legislative Day, which also kills the bill.

Debate

- If a bill reaches the floor, it is debated and voted on by the body.
- If it passes, the bill is sent to the other body, where it goes through the same introduction and committee processes.

Law

- If a bill passes both the House and Senate, it is sent to the Governor.
- If signed by the Governor, the bill becomes law.
- If vetoed by the Governor, the Legislature has an opportunity to decide whether to override or uphold the veto.
- If the Legislature succeeds in overriding the veto, the bill becomes law.

South Dakota Legislative Lingo

Here are a few of the terms you'll likely hear this session. For a full listing, check out the Legislative Research Council.

act - a bill passed by the Legislature.

amendment - any alteration made or proposed to a bill, motion, or clause thereof by adding, changing, substituting, or omitting.

appropriation - money set aside by formal action for a specific use.

bill - a proposed law introduced during a session for consideration.

calendar - a list of bills or other items reported out of committee for consideration by the legislative body.

caucus - an informal organization of members of each political party of the House or the Senate, or both, that exists to discuss issues of mutual concern and possibly to perform legislative research and policy planning for its members.

concurrent resolution - a form of legislation expressing the opinion of the Legislature. It does not have the force of law.

co-sponsor - a joint sponsor of a bill or resolution.

do not pass - the recommendation of a committee when the committee feels it is important for the bill to be considered by the entire house, but does not recommend its passage.

do pass - the recommendation of a committee when the committee recommends the bill pass in its original form.

do pass amended - the recommendation of a committee when the committee recommends the bill pass, not in its original form, but in an altered form adopted by the committee.

enacting clause - that portion of a bill indicating that all following material is to become law. By constitutional provision each proposed law must be preceded by this clause: "BE IT ENACTED BY THE LEGISLATURE OF THE STATE OF SOUTH DAKOTA."

Executive Branch - the branch of government charged with the execution and enforcement of laws and policies and the administration of public affairs.

expenditure - an amount of money that is spent on something.

General Appropriations Act - an act passed by the Legislature and signed by the Governor that appropriates money for the ongoing, ordinary expenses of the three branches of state government.

Governor - the elected executive to head the State of South Dakota.

hoghouse - a procedure used in the Legislature whereby a committee or a member from the floor will move to strike everything after the enacting clause of a bill and insert in lieu thereof the substance of an entirely new bill.

House of Representatives - the lower chamber in the state's bicameral governing bodies.

joint committee - a committee that includes membership from both houses of the Legislature.

joint resolution - used primarily to propose amendments to the South Dakota Constitution and to ratify amendments to the U.S. Constitution.

joint session - a joint meeting of both houses of a bicameral legislature.

Judicial Branch - the branch of government charged with the interpretation of laws and the administration of justice.

lay on the table - postpone a matter before the Legislature; may later be brought up for consideration by motion from the floor.

Legislative Branch - the branch of government having the power to make laws.

legislative committee - a subgroup of legislators who make an initial determination if the proposal should go forward in the Legislature.

legislative day - a day on which a formal legislative floor session is held.

Legislative Research Council - the nonpartisan staff that provide legal analysis, fiscal analysis, and advice in addition to research, drafting, and budget services to the Legislature.

legislator - a person elected by the citizens to make laws.

Legislature - the legislative body.

line-item veto - authority to veto part rather than all of an appropriations act.

Majority Leader - the head of the majority party in a legislative body.

Majority Party - a group of legislators of the same political party who have the greatest number of elected members and who control the leadership positions.

majority vote - a number or percentage of votes equaling more than half of the total number of members to pass legislation.

Minority Leader - the head of the minority party in a legislative body.

Minority Party - a group of legislators of the same political party who have the fewest number of elected members.



President - a title given to the presiding officer of the Senate held by virtue of the office of Lieutenant Governor.

President Pro Tempore - a Senator elected by the Senate, who is the constitutionally recognized officer of the Senate who presides over the chamber in the absence of the President.

prime sponsor - the legislator or legislative committee introducing a bill.

two-thirds majority - a super majority vote requiring two-thirds of the members to pass legislation.

Whip - a legislator elected by members of the political party to assist leadership.

without recommendation - the recommendation made by a committee when the committee cannot come to a consensus or has no feelings on the bill one way or another, so feels the entire house should determine whether it should pass.

October 20-January 6

Pheasant Hunting Season, Statewide, Pierre, SD, 605-223-7660

November 20-December 26

Christmas at the Capitol, Pierre, SD, 605-773-3178

December 15-March 31

South Dakota snowmobile trails season, Lead, SD, 605-584-3896

January 1, February 3, March 3

Meat Shoot, Crooks Gun Club, Practice rounds at 10 a.m., Shoot starts at 11 a.m., 2808 W. 84th St. N., Sioux Falls, SD, 605-941-1984

January 3-5

Dakota Farm Show, Thursday and Friday 9 a.m. to 5 p.m., Saturday 9 a.m. to 5 p.m., Dakota Dome, Vermillion, SD

January 11-12

Annual Red Dirt Festival, Deadwood, SD, 605-559-0386

January 13, February 10, March 10

Meat Shoot, Sportsmen's Club, Practice rounds at 10 a.m., Shoot starts at 11 a.m., 48605 255th St., Garretson, SD, 605-359-3844

January 15

40th Annual Ranchers Workshop, 9 a.m. to 2:30 p.m. CT, Community Events Center, White River, SD, 605-259-3252 ext. 3

January 17

Community Club Annual Banquet, Dinner catered by The Knotty Pine Supper Club, Entertainment by Comedian Scott Novotny, Elkton, SD Tickets 605-542-2681



January 8-March 13: South Dakota Legislative Session, Pierre, SD, 605-773-3251

Photo courtesy: travelouthdakota.com

January 18-19

Media One Funski, Sioux Falls, SD, 605-339-0000

January 18-20

Winterfest, Lead, SD, 605-584-1100

January 20, February 17, March 17

Meat Shoot, Izaak Walton League, Practice rounds and shoot starts at 11 a.m., 5000 North Oakview Place, Sioux Falls, SD, 605-359-9516

January 25-26

Living History Fair, Lake Area Technical College, School children only on Friday, Open to public on Saturday, Watertown, SD, 605-881-1758

January 25-February 3

Annual Black Hills Stock Show & Rodeo, Rapid City, SD, 605-355-3861

January 26-27

Dakota Territory Gun Show, National Field Archery Building, Yankton, SD, 605-665-4537

January 27, February 24, March 24

Meat Shoot, Gun Club, Practice rounds at 10 a.m., Shoot starts at 11 a.m., 2378 310th St., Rock Valley, IA, 712-540-9757, 712-470-6794 or 712-451-8366

February 2

Lake Hendricks Fishing Derby, Hendricks, MN, 507-828-2113

February 2-3

Dakota Territory Gun Show, Dakota Event Center, Aberdeen, SD, 701-336-7533

February 8-10

Black Hills Sports Show & Outdoor Expo, Rapid City, SD, 605-939-1812

February 9-10

Dakota Territory Gun Show, Trophy Show - The Big One, Convention Center, Sioux Falls, SD, 605-630-2199

February 16-17

Dakota Territory Gun Show, Ramkota River Centre, Pierre, SD, 605-280-2438

February 21-23

Sno Jam Comedy Festival, Sioux Falls, SD, siouxfallssnojamcomedyfest@gmail.com

February 22-23

State Wrestling Tournaments, Rushmore Plaza Civic Center, Rapid City, SD, 605-394-4111

March 9-10

2019 Gun Show, American Legion Hall, Saturday 9 a.m. to 5 p.m., Sunday 9 a.m. to 3 p.m. MST, Philip, SD, 605-441-8466 or 605-441-1216

To have your event listed on this page, send complete information, including date, event, place and contact to your local electric cooperative. Include your name, address and daytime telephone number. Information must be submitted at least eight weeks prior to your event. Please call ahead to confirm date, time and location of event.