

COOPERATIVE CONNECTIONS



Hurricane Aid

**Linemen Help
Restore Power After
Hurricane Helene**
Pages 8-9

First Responders
Pages 12-13

Load Growth and Investment



Tim McCarthy
General Manager/
Chief Executive
Officer

Tim.McCarthy@
siouxvalleyenergy.
com

Reliability depends upon an electric system that is resilient, robust, and redundant. How does that happen? It happens when there are insightful, long-term planning strategies incorporated at all levels of the electrical system – generation, transmission, and distribution.

I've talked at length in the past about Sioux Valley Energy's system planning and its 20-plus year plan to update its distribution system. This is essential to all members – not just new members. While it's true we are adding new electrical infrastructure to serve new loads; upgrading existing infrastructure is just as important. These upgrades help us better serve existing members who need more electrical capacity to power their lives.

Last month in my column, I addressed power supply rate impacts which in part are due to investments needed to address load growth. The investment is significant. Basin Electric Power Cooperative (Sioux Valley Energy's wholesale power supplier) will be spending more than \$8 billion in the next 10 years to be able to provide power to electric co-op members. However, electric system investment is not limited to the wholesale power supply level. There are significant investments being made in the transmission and distribution system as well.

The numbers are staggering if you look at the planned 10-year investments for just Sioux Valley Energy members. To support the future load growth of Sioux Valley Energy, approximately \$440 million (yes, that's right – nearly *half a billion* dollars) will be invested to support just the SVE membership at the generation, transmission, and distribution levels. That is an additional \$15,000 per member on top of what is already invested!

While it is a heavy lift, we are ready for the challenge and are making long-term plans to meet member demand for electricity. Just think about your own use of electricity and how much it has increased in just the

last decade. So much is changing, and those changes will require unprecedented amounts of electricity. For example, technology has been evolving to include more and more artificial intelligence (AI) and data mining. What is the common denominator for those technologies? THE NEED FOR ELECTRICAL POWER! Every one of those computers needs to be powered; and because of the heat they produce, they also need to be cooled. How do you do that? You do it through electricity!

There are many examples of our growing demand for electricity but well-planned investment in the electric grid will help us get to where we need to be in the future, which centers around a reliable system for our members. Will there be challenges? Yes. Will there be a rate impact? Yes. Will we work to mitigate impacts to the best of our ability? Yes. Don't get me wrong – while there is a cost to load growth, there is also a significant benefit. As I mentioned, there are costs to infrastructure investment, however, those costs are spread out over 30 years, so future members will also help pay for it. Load growth also signals strong economic development – which is important for communities, businesses, and individuals.

We plan to go into more detail about the impact of load growth at our district meetings which will be held throughout the winter months – check out the dates listed in this edition of the newsletter and mark it on your calendar. Next month, we hope to provide you with specific information about the upcoming rate increase and how it will impact your electric bill.

Approximately
\$440 million
will be invested to support
SVE members at the
generation, transmission,
distribution, levels in
the next 10 years.

COOPERATIVE CONNECTIONS
SIoux VALLEY ENERGY

(USPS No. 497-440)

Board President: Dan Leuthold

Board of Directors

Dave Daniel - Vice President	Dr. Leslie Heinemann
Don DeGreef - Secretary	Gregg Johnson
Ann Vostad - Treasurer	Mark Rogen
Rodney DeMent	Lucas Roskamp
Gary Fish	Allan Weinacht

CEO/General Manager: Tim McCarthy

Chief Financial Officer: Jason Maxwell

V.P. of Engineering & Operations: Ted Smith

V.P. of Human Resources

& Member Services: Kimberlee Hansen

V.P. of Public Relations: Carrie Vugteveen, Editor

V.P. of Technology: Justin Moose

Executive Assistant: Brenda Schelhaas

Sioux Valley Energy Cooperative Connections is the monthly publication for the members of Sioux Valley Energy, PO Box 216, Colman, SD 57017. Families subscribe to *Sioux Valley Energy Cooperative Connections* as part of their electric cooperative membership. The purpose of *Sioux Valley Energy Cooperative Connections* is to provide reliable, helpful information to Sioux Valley Energy members on electric cooperative matters and better living.

Subscription information: Sioux Valley Energy members devote 50 cents from their monthly electric payments for a subscription. Non-member subscriptions are available for \$12 annually. Periodicals Postage Paid at Colman, SD 57017 and at additional mailing offices.

POSTMASTER: Please send address changes to *Sioux Valley Energy Cooperative Connections*, PO Box 216, Colman, SD 57017; telephone 605-534-3535; toll free 800-234-1960.

How to contact us: Phone: 1-800-234-1960
e-mail: sve@siouxvalleyenergy.com
Website: www.siouxvalleyenergy.com

In accordance with Federal civil rights law and U.S. Department of Agriculture (USDA) civil rights regulations and policies, the USDA, its agencies, offices and employees, and institutions participating in or administering USDA programs are prohibited from discriminating on the basis of race, color, national origin, age or disability. Remedies and complaint filing deadlines vary by program or incident.

Persons with disabilities who require alternative means of communication for program information (e.g. Braille, large print, audiotape, American Sign Language, etc.) should contact the responsible Agency or USDA's TARGET Center at (202) 720-2600 (voice and TTY) or contact USDA through the Federal Relay Service at (800) 877-8339. Additionally, program information may be made available in languages other than English.

To file a program discrimination complaint, complete the USDA Program Discrimination Complaint Form, AD-3027, found on-line at http://www.ascr.usda.gov/complaint_filing_cust.html, and at any USDA office, or write a letter addressed to USDA and provide in the letter all of the information requested in the form. To request a copy of the complaint form, call (866) 632-9992. Submit your completed complaint form or letter to USDA by:

- (1) mail: U.S. Department of Agriculture
Office of the Assistant Secretary for Civil Rights
1400 Independence Avenue, S.W.
Washington, D.C. 20250-9410
- (2) fax: (202) 690-7442; or
- (3) email: program.intake@usda.gov

Sioux Valley Energy is an equal opportunity provider and employer.

DONATION DRIVE FOR KIDS BEGINS

Sioux Valley Energy members can help area kids through the Cooperative's fourth annual Tree of Giving Hope drive. This year, the Cooperative will be collecting **personal care items such as toothpaste, toothbrushes, shampoo, conditioner, body wash, facial wash, combs, hairbrushes, deodorant, antiperspirant, and feminine products** for students at area schools.

To participate in the 2024 campaign, SVE members can bring donations to one of SVE's offices during business hours (7:30 a.m. to 4:30 p.m.) by December 29 and receive a small gift in return.

SIoux VALLEY ENERGY OFFICE DROP OFF LOCATIONS:

Brandon Service Center: 108 N Heritage Road, Brandon

Colman Headquarters: 23491 471st Ave. Colman, SD 57017

Hartford Service Center: 1185 Ruud Trl. #4, Hartford (office closes at 4 p.m.)

Pipestone Service Center: 1102 7th St SE, Pipestone, MN

This year's Tree of Giving Hope Donation Drive will benefit area school children with personal care items.

Needed Items:

Toothbrushes	Combs
Toothpaste	Hairbrushes
Shampoo	Deodorant
Conditioner	Antiperspirant
Body Wash	Feminine Products
Facial Wash	

ENJOY A SAFE HOLIDAY SEASON

From late November to mid-January, when families gather, parties are scheduled and travel spikes, safety should be top of mind. Following is tried-and-true advice to ensure your family remains safe and injury-free throughout the season.

Traveling for the Holidays? Be Prepared

If you're traveling this year, be sure your vehicle is in good running condition, get plenty of rest and be prepared for any emergency. Traveling by car during the holidays has the highest fatality rate of any major form of transportation based on fatalities per passenger mile. Hundreds of people die every year in crashes on New Year's Day, Thanksgiving Day and Christmas Day, according to Injury Facts. Alcohol impairment is involved in about a third of these fatalities.

Stay safe on the roads over the holidays – and every day:

- Prepare your car for winter and keep an emergency kit with you.
- Get a good night's sleep before departing and avoid drowsy driving.
- Leave early, planning ahead for heavy traffic.
- Make sure every person in the vehicle is properly buckled up no matter how long or short the distance traveled.
- Put that cell phone away; many distractions occur while driving, but cell phones are the main culprit.
- Practice defensive driving.
- Designate a sober driver to ensure guests make it home safely after a holiday party; alcohol or over-the-counter, prescription and illegal drugs can cause impairment.

Decorate Safely

Decorating is one of the best ways to get in a holiday mood, but emergency departments see thousands of injuries involving holiday decorating every season.

When decorating follow these tips from the U.S. Consumer Product Safety Commission:

- Keep potentially poisonous plants – mistletoe, holly berries, Jerusalem cherry and amaryllis – away from children.
- If using an artificial tree, check that it is labeled “fire resistant.”
- If using a live tree, cut off about two inches of the trunk to

- expose fresh wood for better water absorption, remember to water it, and remove it from your home when it is dry.
- Place your tree at least three feet away from fireplaces, radiators and other heat sources, making certain not to block doorways.
- Avoid placing breakable ornaments or ones with small, detachable parts on lower tree branches where small children can reach them.
- Only use indoor lights indoors and outdoor lights outdoors, and choose the right ladder for the task when hanging lights.
- Replace light sets that have broken or cracked sockets, frayed or bare wires or loose connections.
- Follow the package directions on the number of light sets that can be plugged into one socket.
- Never nail, tack or stress wiring when hanging lights, and keep plugs off the ground away from puddles and snow.
- Turn off all lights and decorations when you go to bed or leave the house.

Source: National Safety Council



“Don’t Spill Water on Electronics... It Could Start a FIRE!”

Bethany Langworthy, Age 9

Bethany Langworthy warns readers to be careful with water around electronics. Thank you for your picture, Bethany! Bethany's parents are Kristina and Edward Langworthy, members of West River Electric.

Kids, send your drawing with an electrical safety tip to your local electric cooperative (address found on Page 3). If your poster is published, you'll receive a prize. All entries must include your name, age, mailing address and the names of your parents. Colored drawings are encouraged.

Family FAVORITES



CREAM CHEESE AND CUCUMBER SPREAD DIP

Ingredients:

1 large cucumber, grated
 1 tsp. onion, grated
 8 oz. pkg. cream cheese
 3/4 1 cup mayonnaise
 Salt and pepper to taste

Method

Grate cucumber and onion on several thicknesses of paper towels, squeeze out all the water. Place in a bowl. Blend other ingredients, adding enough mayonnaise to make it a spreading consistency. Serve with crackers or chips.

Mary Ann Klarenbeek
 Harrisburg, S.D.

GRANDMA GRACE'S FROZEN FRUIT SALAD

Ingredients:

8 oz. Cool Whip
 1 tbsp. lemon juice
 1 cup sour cream
 3/4 cup sugar
 Dash of salt

Mix all thoroughly until sugar is dissolved.

9 oz. can pineapple, crushed and drained
 Small jar maraschino cherries (halve or chopped if desired)
 2 sliced bananas (halve or quarter slices if desired)
 1/4 cup chopped walnuts

Method

Mix thoroughly. Pour into 8x8 or 9x9 container. Cover and freeze. Thaw 10 15 minutes to allow cutting into serving portions.

My mother, Grace Alley, first made this salad for holiday meals. It has become a family favorite, and we always have it for one of our holidays.

Mary Harris
 Glad Valley, S.D.

LEMON ROSEMARY GLAZED HAM

Ingredients:

1 bone in spiral cut ham, about 10 lbs.
 1 1/4 cups honey, divided
 2 tsp. lemon extract
 1 1/4 tps. whole rosemary leaves, crushed, divided

Method

Preheat oven to 325 F. Place the ham on its side in roasting pan. Mix 1 cup of the honey, 1 1/2 tps. of the extract and 1 tsp. of the rosemary in small bowl until well blended. Brush 1/2 of the honey mixture over ham, gently separating the slices so mixture can reach middle of ham. Cover loosely with foil.

Bake 1 hour, basting occasionally with pan drippings. Remove foil. Brush with remaining honey mixture. Bake 45 minutes longer.

Meanwhile, mix remaining 1/4 cup honey, 1/2 tsp. extract and 1/4 tsp. rosemary in small bowl. Serve with ham along with the pan drippings.

McCormick.com

Please send your favorite recipes to your local electric cooperative (address found on Page 3). Each recipe printed will be entered into a drawing for a prize in December 2024. All entries must include your name, mailing address, phone number and cooperative name.

May Your Holidays Be Merry and Bright



Sheila Gross
Energy Services
Specialist

For info on beneficial electrification programs, contact Sheila Gross at sheila.gross@siouxvalleyenergy.com to learn more. Check out our incentives and resources for using electricity wisely here:



It's hard to believe we'll soon be gathering with family and friends to celebrate the holiday season. This festive time of year brings joy and warmth, but as the weather gets cooler and we spend more time indoors, the holidays can also bring increased energy use and a higher risk of electrical and fire hazards.

As your local electric cooperative, our team at Sioux Valley Energy cares about your wellbeing. This month, I'd like to share a few practical tips to help you stay safe and efficient during the holiday season.

SAFETY FIRST.

My family truly enjoys decorating our home for the holidays. Before we deck the halls, I always check electrical cords and light strands to make sure they aren't frayed or damaged. This gives us peace of mind, knowing our holiday lights are ready to safely brighten our home. I also double check the lights we use outside to make sure they're rated for outdoor use.

Like many households, we also enjoy holiday-scented candles. While festive, candles can create fire hazards and should never be left unattended. One of the best and easiest ways to safeguard your home is to test smoke alarms often. I test mine on the first of each month, so it's easy to remember. Testing smoke alarms only takes a few seconds and could save lives, so make it a habit.

'TIS THE SEASON FOR SAVINGS.

Spending more time indoors with a few more guests in the home can really impact

home energy use. By taking a few small steps to save energy during the holiday season, you can lower your bills.

I like to remind my family members to mind the thermostat. Since heating and cooling makes up the majority of home energy consumption, the thermostat is one of the best places for savings. Lower it a few degrees, especially when you have family or friends stopping by. Good company brings additional warmth to your home.

Your family can also save energy by decorating with LED holiday lights. LEDs are the most energy efficient lighting options available, and they last much longer than traditional bulbs.

There's no denying one of the best parts of the holiday season is the food – not just the meals but the time we spend together in the kitchen. There are many ways to save in the heart of your home, but one of the best approaches is to cook with smaller countertop appliances, such as air fryers, slow cookers, and toaster ovens. These handy appliances consume a fraction of the energy used to heat the oven, creating the perfect recipe for mealtime and energy savings.

I hope you will implement some of these energy-saving and safety tips into your holiday plans. For additional advice, visit our website at www.siouxvalleyenergy.com or scan the code on this page. We're here to help you with safety and savings year-round.

From your friends at Sioux Valley Energy, we hope your holiday season is merry and bright.


REGISTER TO WIN

Register by **December 31, 2024**, to win the NEST Thermostat pictured.

Name: _____
Address: _____
City, State, ZIP: _____
Account #: _____
Phone #: _____
Email: _____

Mail this form to: Sioux Valley Energy, PO Box 216, Colman, SD 57017






**THE COUNTRY
COOKIN'**
cookbook

RECIPES NEEDED
Help us create
another great cookbook
by submitting your
favorite recipes.

Your recipe could be
featured in the
41st volume of
East River Electric's
Country Cookin'
cookbook!



Submit to be entered into
a drawing for 1 of 2
\$100 Visa gift cards

Submit recipes to
graphics@eastriver.coop
or contact your local co-op
for more information.



STALFORD NAMED TOUCHSTONE ENERGY® SCHOLAR OF THE WEEK

Chester Area High School's Arien Stalford is the Touchstone Energy® Scholar of the Week winner for the week of October 20, 2024.

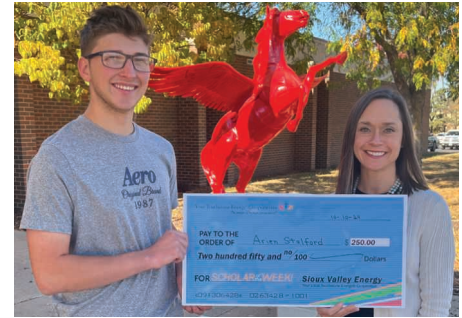
"As a member of the community where Arien lives, works, and volunteers, it has been my pleasure to see his outstanding character and dedication to his school and community," wrote Linda Krsnak in support of Stalford's nomination.

Krsnak noted Stalford's work as a volunteer with area senior citizens through his five years helping at the local nutrition site.

"He is usually the first person to volunteer to help deliver to shut ins or nearby communities. His positive attitude toward volunteering along with his academic involvement is quite impressive," Krsnak said.

In school, Arien is a manager for the football team, acts in school plays, and is a member of the band, choir, honor society, wrestling team, and golf team. He has represented the school in the South Dakota All-State Choir, was a South Dakota Boys State delegate, and participated in the Governor's Cyber Academy. He is also active in his local church and other community activities. He plans to attend Dakota State University in Madison, South Dakota, majoring in cyber operations.

"Arien is a kind-hardworking young person who is always willing to give a helping hand. He has shown his dedication to school by being part of the dual credit Cyber Academy through DSU. Arien is an outstanding student with strong character qualities," said Julie Eppard, Chester Area School's Secondary Principal.



Her comments were echoed by Kari Dossett, the district's 6-12 counselor, who said, "Arien is one of the most kind, considerate, and thoughtful students you will ever meet. He has a heart of gold! He is also incredibly smart and hard working. Arien has and will continue to do so much good with his life, and I am excited to see all the accomplishments in store for him!"

He is the son of Jason and Jessica Shaw of Wentworth, South Dakota.

The scholar of the week program is a partnership between Dakota News Now Television, Sioux Valley Energy, and other local Touchstone Energy Cooperatives that honors accomplished high school students.

As a Scholar of the Week, Arien was featured the week of October 20 on Dakota News Now and will receive a scholarship from Sioux Valley Energy. Arien is also now eligible to receive a scholarship that will be given away this spring at the annual Scholar of the Year banquet.

"Sioux Valley Energy salutes Arien and all students who set an example of hard work and high academic standards," said Sioux Valley Energy Vice President of Public Relations Carrie Vugteveen.



HURRICANE AID

Linemen Help Restore Power After Hurricane Helene

Jacob Boyko

jacob.boyko@sdrea.coop

Linemen from five of South Dakota's rural electric cooperatives traveled to the Southeastern U.S. in October to help restore power along Hurricane Helene's path of destruction.

The 18 linemen left Oct. 2 for Pickens, South Carolina, where Blue Ridge Electric Cooperative faced over 64,000 meter outages and more than 800 broken poles in Helene's aftermath.

Zach Hansen, a lineman from West River Electric Association, didn't think twice before he volunteered to go along.

"It's just the co-op way," he said. "There are people in need down there who lost their houses – lost their lives – and this is something we know we can do to help. It's kind of a once-in-a-lifetime opportunity."

The linemen stayed at a crowded base camp with dozens of other utility workers from all across the country. They slept on cots in a large, open army-sized tent, but with their busy schedules, they didn't spend

much time there anyway. Most days, the linemen woke at 5:30 a.m. for breakfast and worked in the field until supper at 8 p.m.

The work also presented unfamiliar challenges for the linemen; each time the crew needed to repair damaged infrastructure, they'd first have to start the labor-intensive process of clearing through debris and trees toppled by Helene's heavy wind gusts.

"When we have blizzards and ice storms in South Dakota, it's hard work – and you're trying to stay warm," Hansen explained. "But out here, there's a lot more chainsaw work and fixing wire breaks. It's not just straight miles of line lying down like we're used to at home."

By Oct. 9, fewer than 1,000 meters in Blue Ridge Electric territory remained offline, and the South





Dakota crews were dismissed to begin the 1,200-plus mile journey home.

But as the South Dakota convoy – which included bucket trucks, skid steers and ATVs – moved north, another call came in.

Jefferson Energy Cooperative in Wrens, Georgia, also faced catastrophic damage to their distribution lines, with 100% of their service territory without power after the storm. On Oct. 9, as South Dakota's linemen were driving home from South Carolina to reunite with their families, still over 10,000 homes and businesses remained without power.

Just like before, South Dakota's rural electric cooperatives answered the call.

"When our line superintendent called me that morning and asked me how we felt about going to Georgia, I said, 'well, we're right here, so we might as well go in and help,'" Bon Homme Yankton lineman Gunnar Dally said. "If they need help, we're more than willing to come."

The stop in Wrens delayed the linemen's return home by about a week, but the appreciation from the communities helped keep spirits high.

"When we were on breaks, there were people stopping to thank us for helping," Dally said. "A lot of them were very surprised when we said we were from South Dakota."

Hansen recognized another subset

of heroes: the families.

"The unsung heroes of storm jobs are the people we leave behind," he said. "My wife is at home with six kids taking care of the ranch while I'm gone. If we didn't have those people, we couldn't go out and do the things we needed to do. They are the real heroes."

SDREA General Manager Steve Barnett thanked the linemen for volunteering to help with the storm restoration efforts and for embodying

the values of South Dakota's rural electric cooperatives.

"These 18 linemen gave up time at home with their families to help people in need they've never met in a place they've never been," Barnett said. "Their selfless actions reflect what we stand for as a family of cooperatives, as South Dakotans, and as fellow Americans. We thank them for their work, their spirit and their dedication to keeping the lights on – at home, and in South Carolina and Georgia."





Be Prepared for Winter Storms

When winter temperatures drop and storms hit, it can be challenging to stay safe and warm. Winter storm severity varies depending on where you live, but nearly all Americans are affected by extreme winter storms at some point. Sioux Valley Energy cares about your safety, and we want you to be prepared.

Heavy snow and ice can lead to downed power lines, leaving co-op members without power. During extremely low temperatures, this can be dangerous. During a power outage, our crews will continue to work as quickly and safely as possible, as conditions allow, to restore power, but there are a few things you can do to prepare yourself.

- **STAY WARM** - Plan to use a safe alternate heating source, such as a fireplace or wood-burning stove during a power outage. These are great options to keep you and your loved ones warm, but exercise caution when using, and never leave the heating source unattended. If you are using gasoline-, propane-, or natural gas-burning devices to stay warm, never use them indoors. Remember that fuel- and wood-burning sources of heat should always be properly ventilated. Always read the manufacturer's directions before using. As an alternate source, and maybe more readily available, candles may also be used cautiously, to provide a little warmth and light to a small area. Be sure to always monitor candle use.
- **STAY FED** - The CDC recommends having several days' supply of food that does not need to be cooked handy. Crackers, cereal, canned goods, and bread are good options. Five gallons of water per person should also be available in the event of an extended power outage. And, while most probably don't use their outdoor cooking grills during the winter months, they too, can provide a way to cook a meal, melt some snow, and heat some water, outdoors of course.
- **STAY SAFE** - When an outage occurs, it may mean power lines are down. It is best not to travel during winter storms, but if you must, bring a survival kit along, and do not travel alone. If you encounter

downed lines, always assume they are live (energized). Stay as far away from the downed lines as possible, and report the situation to our dispatchers by calling 800-234-1960 if possible.

Winter weather can be unpredictable and dangerous, and planning ahead can often be the difference between life and death. Sioux Valley Energy is ready for what Mother Nature has in store, and we want you to be ready, too. For more winter safety tips, visit www.siouxvalleyenergy.com or www.ready.gov/winter-weather.

Keep Food Safe Before, During and After a Power Outage

Unfortunately, power outages do occur from time to time. It's important to know how to keep your food safe during an outage. Use these tips from USDA to help minimize food loss and reduce your risk of illness.

Before power outage	During power outage	After power outage
<p>Keep refrigerator at 40° or below. Freeze items like fresh meat and poultry that you won't use immediately. Keep freezer set to 0° or below. Group frozen foods to help items stay colder longer.</p>	<p>Keep the refrigerator and freezer doors closed!</p> <p>If the doors stay closed during the length of the outage:</p> <p>A full freezer will hold its temperature for 48 hours.</p> <p>A refrigerator will keep food safe for four hours.</p>	<p>Check the temperature inside your refrigerator and/or freezer.</p> <p>If the temperatures are safe, the food should be safe to eat.</p>

Foods that should be thrown out after an extended power outage:

- Meat, poultry or seafood products
- Milk, yogurt and other dairy products
- Cooked or sliced produce
- Eggs and egg products
- Soft and shredded cheese
- Opened baby formula
- Dough and cooked pasta

AMERICA'S ELECTRIC COOPERATIVES

Source: USDA

Space Heaters: Yes or No?

With winter's chill approaching, some members may be thinking of their home heating needs. While electric heat is a great choice, there are a few things to consider before purchasing a space heater.

RELYING ON SPACE HEATERS MAY DISAPPOINT

As colder weather moves in, the Cooperative will occasionally receive calls from members concerned about higher electric bills. Some of those calls will come from disappointed members who expected to save money by relying on space heaters to heat their homes.

SEAL YOUR HOME'S ENVELOPE

Space heaters are generally not the most cost-effective option when it comes to electric heat. We recommend installing a more efficient system – either an air-source heat pump or geothermal unit. Beyond installing an extremely efficient HVAC system, you can seal up the cracks. Sioux Valley Energy wants its members to recognize their home is a living and breathing system. The best way to heat (or cool) your home is to seal the home's envelope and use a properly installed and efficient whole house heating system.

NO SUCH THING AS MIRACLE HEATERS

Focusing on space heaters, we must make one thing clear to our members...there is no such thing as a "miracle heater." While technology has improved and heaters may have become more efficient over time, the laws that govern electricity are much like those of physics. Neither sees a lot of amendments! With this in mind, here is another fact: A Watt is a Watt is a Watt. In other words, if a person plugs in a 1,500-watt space heater it is going to use 1,500 watts of energy. Putting a very nicely built mahogany cabinet around a \$30 space heater and charging people \$350 for it doesn't change the amount of power that unit is going to use. It's not a miracle. For the sake of argument we'll call it a misrepresentation of a product's true potential to perform.

DO A COST ANALYSIS BEFORE PURCHASE

If you are using these units, our Beneficial Electrification Department can do a cost analysis for you. You may be shocked to see what these will actually cost you. Oftentimes people tell us things like, "the salesperson told me these heaters would cost me pennies a day." If this sounds familiar, think about this... did they quantify *how many* pennies per day?



Photo by Sioux Valley Energy

EFFICIENT DOES NOT EQUAL COST-EFFECTIVE

Electric resistance heaters are efficient. For every unit of electricity that is consumed by these devices, they will produce one unit of heat. The problem is they are just not very cost-effective. No matter how you slice it, a watt is a watt. It doesn't matter what kind of heater or appliance you have. If you put 1,000 watts in, you get 3,412 British Thermal Units of heat out.

MULTIPLE HEATERS MULTIPLY COSTS

We receive calls from members who have multiple electric space heaters in their home. Because these members have been misled, they wonder how their electric bills could be so high. The simple fact is the cost of operating multiple electric heaters is almost always significantly more than most central heating systems.

CONTACT SIOUX VALLEY ENERGY

Sioux Valley Energy's Beneficial Electrification Department has the experience and knowledge to help guide you in your quest to save on your heating bills. Ask questions and do some research before you buy any "miracle heaters." You may find that facts will cut through a lot of marketing hype and could save you a significant amount of money and frustration in the end.

Also, be sure to check out Sioux Valley Energy's electric heat rate and other incentives for your home's heating and cooling needs at www.siuoxvalleyenergy.com or scan the QR code here.





STAYING SAFE

First responders put out a fire near Belle Fourche. Photo submitted by Butte Electric Cooperative.

Butte Electric Cooperative Connects With First Responders

Frank Turner
frank.turner@sdrea.coop

October marks First Responders Month, a time to honor the dedication and courage of those who rush toward danger to keep their communities safe. This fall, electric cooperatives across the country expressed their gratitude to these everyday heroes who are always prepared to protect lives and the essential infrastructure that supports local neighborhoods.

Day or night, regardless of the weather, first responders answer the call, whether it's battling a blaze or responding to a medical emergency. When it comes to keeping the community safe, their collaboration with local electric co-ops is key for both local residents and the first responders themselves. Together, they work to ensure that emergencies are managed quickly, effectively and, most importantly, safely.

In September, Butte Electric further strengthened its ties and

communications with local first responders following an eventful summer by hosting a series of safety demonstrations for emergency crews in Meade and Butte Counties and the U.S. Forest Service.

"Earlier this year we faced several incidents that resulted in exposed power lines near first responders," said Matt Sleep, chief executive officer of Butte Electric. "In one case, we had a situation west of Spearfish where strong winds brought down a billboard, exposing lines that sparked and started a fire."

Both Butte Electric and the local fire department responded to the emergency, de-energizing the lines and containing the small grass fire. In a separate incident, a driver suffered a medical emergency and crashed into an electrical pedestal. Although the driver died in the accident, the actions of first responders and the electric cooperative prevented further injuries. The incident, among others, prompted Butte Electric to take proactive steps in preparation for the next possible emergency.

"We wanted to both educate responders and build some rapport, so when they see a power line, they know who to call and that they are comfortable getting in contact with us," said Sleep.

Butte Electric employees organized and led a hands-on safety training using the South Dakota Rural Electric Association's high voltage demonstration trailer, a specialized tool



that highlights the very real dangers of electricity. During the session, linemen demonstrated how electricity can arc, or jump, from one connection to another, always seeking the easiest path to the ground.

The training is one that linemen across the state have facilitated, which includes a memorable demonstration involving a grapefruit to show how contact with electricity impacts organic material. On the outside, the grapefruit appears undamaged after contact with an electrified line but cutting it open reveals it's been cooked from the inside.

The training left an impression with Trevor Papenfuss, an assistant fire management fire officer who has served with the U.S. Forest Service in the Spearfish area for more than 30 years. Papenfuss was just one of roughly 30 U.S. Forest Service members who attended the demonstration.

"We deal with incidents involving electricity at least once a year, if not more," Papenfuss said. "Butte

Electric provided us with a lot of valuable information and a powerful demonstration. Seeing a grapefruit burn from the inside out makes a big impact and impression of just how dangerous live electricity can be. Several of our new wildland firefighters attended and they took away information that will stay with them for a long time."

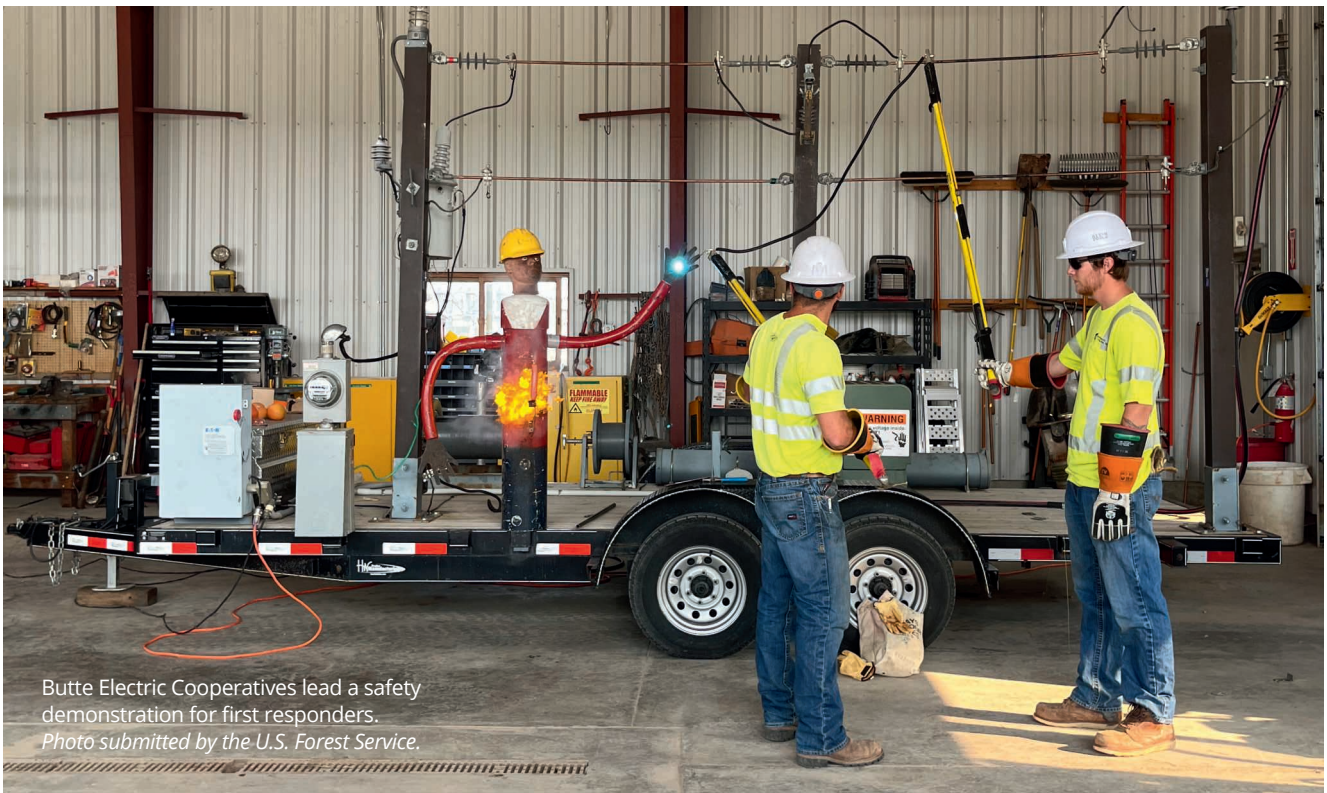
In a separate training tailored to the Sturgis Fire Department, Volunteer Fire Chief of the Sturgis Fire Department Scott Lensegrav said the training was impactful for his fellow volunteers. In addition to noting the value of the demonstration, Lensegrav highlighted the importance of maintaining a strong line of communication between electric service providers like Butte Electric and the fire department, especially during an emergency.

"In a situation involving power lines or electricity, the first thing we do is communicate with dispatch to try and figure out whose power line is involved in the emergency," said Lensegrav.

"The training was just another step in building good communication between our department and utilities. It was also great to have the refresher for our volunteers who have been with us for years and a good learning tool for the new volunteers that are coming into the service."

Looking forward, Sleep plans to continue strengthening the relationship between local first responders and Butte Electric for a safer future in their service area.

"It's all about building relationships and familiarity so that first responders know who to talk to and don't hesitate to call," said Sleep. "We deeply appreciate our first responders and want to help them however we can. These emergency personnel and volunteers are what make our communities great, and we just want to play our part in keeping them and our neighborhoods safe."



Butte Electric Cooperatives lead a safety demonstration for first responders.
Photo submitted by the U.S. Forest Service.

2025 DISTRICT MEETINGS SET

The Sioux Valley Energy Board of Directors approved the 2025 District Meeting schedule during their September meeting. Four elections will take place in Districts 2, 4, 6, and 10.

Members interested in running for the Board must submit a Director Petition, Conflict of Interest Statement, and Qualification Certification 60 days prior to the meeting date. Petitions must be delivered to a Sioux Valley Energy office location or postmarked by the petition deadline. Sioux Valley Energy encourages members to gather extra member signatures and to deliver or mail completed petitions in advance of the petition deadline to ensure time for member verification.

PETITION DEADLINES ARE AS FOLLOWS:

- District 6 – Sunday, January 19, 2025
- District 2 – Thursday, January 23, 2025
- District 4 – Friday, January 24, 2025
- District 10 – Thursday, January 30, 2025

Petitions can be obtained at www.siouxvalleyenergy.com or by calling 800-234-1960. The Cooperative Bylaws state the qualifications needed to be a director. Interested members are encouraged to contact Brenda Schelhaas, Executive Assistant. All Board seats elected

Date	District	Director	Location
Tuesday, February 25	8	Leuthold	Generations (Grand Prairie Event Center) Luverne, MN
Thursday, March 13	9	Johnson	Pipestone Area High School Pipestone, MN
Monday, March 17	1	DeGreef	McKnight Hall White, SD
Tuesday, March 18	5	Weinacht	Taopi Hall Colton, SD
Thursday, March 20*	6	Fish* & Rogen (Election)	Brandon Valley High School Brandon, SD
Monday, March 24*	2	Vostad* (Election)	Sioux Valley School Volga, SD
Tuesday, March 25*	4	Daniel* (Election)	Dakota Prairie Playhouse Madison, SD
Monday, March 31*	10	Roskamp* (Election)	Edgerton Public School Edgerton, MN
Monday, April 7	3	Heinemann	William J Janklow Comm. Center Flandreau, SD
Monday, April 21	7	DeMent	West Central School Hartford, SD

in 2025 will serve three-year terms. *Denotes election meetings.

Area Organizations: Earn \$500 Assisting at Meetings

Sioux Valley Energy is seeking non profit groups in 10 area communities to serve the meal at upcoming District Meetings. Each group will be asked to provide 10 to 12 volunteers to serve the meals prepared by our event caterer.

Youth oriented groups must have adults assisting with the serving. Servers will assist prior to the start of the meal and finish their work at the start of the 7 p.m. business meeting.

To sign up your group, or for more information, contact Lori George at 800 234 1960 or lori.george@siouxvalleyenergy.com by Dec. 15.

Preference is given to groups residing in the district where the meeting is held and also to groups who have not served the previous year. If multiple groups sign up to serve a meeting, a drawing will be held.



PENNIES ADD UP

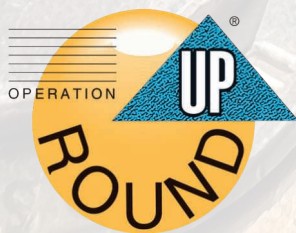
Operation Round Up® Program Contributes \$2.3 million to Area Groups Since 2000

Sioux Valley Energy members continue a tradition of giving through their Sioux Valley Energy Operation Round Up® Program. This quarter, groups receiving funding range from those assisting kids to a local fire department and even tax preparation assistance.

Nearly \$2.3 million has been donated to area non-profits, schools, and communities since the year 2000 when Sioux Valley Energy started its Operation Round Up® (ORU) program. The program is simple – participating members “round up” their electric bill to the next highest dollar and those “rounded up” funds are placed into a trust. Additionally, many Sioux Valley Energy employees donate from their paycheck each month. Each quarter the Operation Round Up Board of Trustees meets to review applications and consider grant requests. So far in 2024, more than \$92,600 in Operation Round Up grants has been provided and an additional \$15,000 set aside for scholarships.

A list of recent grant recipients, as well as information on how local organizations can apply for funding, can be found at <https://www.siouxvalleyenergy.com/operation-round-up>.

The next deadline to apply for funding is November 20 with grants being awarded in December.



SCHOLARSHIPS OFFERED

Application deadline is January 17

To be eligible you must...

- Be a graduating high school senior or a first-time attendee.
- Plan to be a full-time student in an accredited university or technical college.
- Be a child or dependent of a Sioux Valley Energy member.
- Have a 3.0 or higher cumulative GPA for a four-year college or university scholarship and a minimum of a 2.5 or higher for a technical college scholarship. Submit your ACT/SAT scores (if applicable).
- Provide a written recommendation from a teacher, administrator, or counselor.
- One winner per family/per year.

Application details... Applications will be judged on the basis of grades, ACT or SAT test scores (if applicable), work experience, school activities, volunteer/community service, recommendations, and essay questions. Scholarship funds must be used to pay expenses directly related to your continuing education. Application forms are available from your school counselor, from any Sioux Valley Energy Service Center (in Colman, Pipestone, Brandon, and Hartford), on the web at <https://www.siouxvalleyenergy.com/youth-scholarship-programs> or by calling 1-800-234-1960.

Deadline... The deadline for this year's application is 4 p.m. on Friday, January 17, 2025. Applications and supporting materials (*postmarked no later than January 17, 2025*) may be sent to: Sioux Valley Energy/Scholarship Contest, PO Box 216, Colman, SD 57017.





DEC. 7
Santa at the Zoo
 10 a.m.-2 p.m.
 Great Plains Zoo
 Sioux Falls, SD
 605-367-7003

To have your event listed on this page, send complete information, including date, event, place and contact to your local electric cooperative. Include your name, address and daytime telephone number. Information must be submitted at least eight weeks prior to your event. Please call ahead to confirm date, time and location of event.

NOV. 29
Parade of Lights
 Parade of Lights
 7 p.m.
 Chamberlain, SD

NOV. 30
A Hometown Christmas Market
 2 p.m.-6 p.m.
 Main Street
 Elk Point, SD

NOV. 30
Mid-Winter Fair
 9 a.m.-4 p.m.
 Gregory Memorial Auditorium
 Gregory, SD
 605-830-9778

NOV. 29-DEC. 29
Trees & Trains Exhibit at SD State Railroad Museum
 Hill City, SD
 605-665-3636

DEC. 1
A Christmas Carol
 2 p.m.
 Gayville Music Hall
 Gayville, SD
 605-624-2859

DEC. 5
Christmas on the Prairie
 4 p.m.
 Main Street
 Miller, SD

DEC. 5
Holiday Festival of Lights
 4 p.m.-7:30 p.m.
 Yankton, SD
 605-665-3636

DEC. 6
Kimball's Hometown Holiday
 3:30-7 p.m.
 Legion Hall
 Kimball, SD

DEC. 6
Hometown Holiday Vendor Fair
 10 a.m.-6 p.m.
 Armory
 Howard, SD

DEC. 7
Newell Festival of Trees
 9 a.m. - Doors Open
 11:30 a.m. - Community Lunch
 4 p.m. - Auction
 Stockholm Buggy Museum
 Newell City Hall
 Newell, SD

DEC. 6-8, 13-15
A Sherlock Carol
 Dec. 6-7, 13-14, 7:30 p.m.
 Dec. 8, 15, 2:30 p.m.
 Corson, SD
 mightycorson.com

DEC. 7
Santa Day
 2 p.m.
 Stockholm Buggy Museum
 Stockholm, SD
 605-467-3940

DEC. 7
KJAM Parade of Lights
 5:30 p.m.
 Madison, SD
 605-256-4514

DEC. 7-31
Garden Glow at McCrory Gardens
 5 p.m.-9 p.m.
 Brookings, SD
 605-688-6707

DEC. 8
Aberdeen Community Concert Association Fund Raiser
2024 Medora Magical Christmas Memories Tour
 3 p.m.
 Aberdeen Civic Theater
 Aberdeen, SD
 605-228-0946
 aberdeencommunityconcerts.com

DEC. 14
Lake Campbell Church Cookie Walk
 9 a.m.
 Volga, SD
 605-864-9907

DEC. 15
A Poker Alice Christmas
 2 p.m.
 Gayville Music Hall
 Gayville, SD

DEC. 31
American Legion Post 15 Save the Last Dance 2024
 8 p.m.-12:30 a.m.
 El Riad Shrine
 Sioux Falls, SD
 605-336-3470

Note: Please make sure to call ahead to verify the event is still being held.