

# COOPERATIVE CONNECTIONS



## Bringing the Light

Electric Cooperatives  
Spread Holiday Cheer  
Pages 8-9

REED Fund: Powering  
Your Community  
Pages 12-13



# Thankful for SVE Employees



**Tim McCarthy**  
General Manager/  
Chief Executive  
Officer

Tim.McCarthy@  
siouxvalleyenergy.  
com

I'm sure many of you will enjoy time with family and friends on Thanksgiving. For as long as I can remember, I'd eat myself into a turkey coma, prop my feet up on the recliner (after doing the dishes, of course!) and watch football. Even though I work for an electric co-op, I too, sometimes forget what it actually takes to be able to enjoy those Thanksgiving traditions... cooking the turkey? Well, it would take a while over an open flame, so electricity is our method of choice for the bird. That traditional football game on television? Again, possible thanks to electricity. The infrastructure needed to bring power from the generation plant to your home is incredible...but there is another necessary component I want to make sure to highlight during this Thanksgiving season and that is the employees who make it all happen.

Sioux Valley Energy has 110 incredibly dedicated employees who work day in and day out to serve you—our member. We have engineers who help design the system; dispatchers who answer your calls when the power goes out;

member service representatives who help you with your service related questions; beneficial electrification personnel who provide you with information on incentives and programs; accountants who monitor the financial health of the organization; human resource experts who make sure that we hire and retain top notch employees; technicians who serve a variety of support roles for engineering and operations; IT specialists who keep our networks online and up to date; lineworkers who are out in the field every day making sure the electric system works. The list could go on and on, we have experts in all sorts of areas—community and economic relations, electrical wiring, warehousing, metering, administrative coordination, public relations, load management, etc. I am proud of each and every one of them because they have proven over and over again that our members come first.

Join me in giving thanks for the 110 individuals who serve Sioux Valley Energy's nearly 30,000 members!



## COOPERATIVE CONNECTIONS SIOUX VALLEY ENERGY

(USPS No. 497-440)

**Board President:** Gary Fish

**Board of Directors**

Dan Leuthold - Vice President	Gregg Johnson
Don DeGreef - Secretary	Mark Rogen
Dave Daniel - Treasurer	Lucas Roskamp
Rodney DeMent	Ann Vostad
Dr. Leslie Heinemann	Allan Weinacht

**CEO/General Manager:** Tim McCarthy

**Chief Financial Officer:** Jason Maxwell

**V.P. of Engineering & Operations:** Ted Smith

**V.P. of Human Resources**

**& Member Services:** Kimberlee Hansen

**V.P. of Public Relations:** Carrie Vugteveen, Editor

**V.P. of Technology:** Justin Moose

**Executive Assistant:** Brenda Schelhaas

*Sioux Valley Energy Cooperative Connections* is the monthly publication for the members of Sioux Valley Energy, PO Box 216, Colman, SD 57017. Families subscribe to *Sioux Valley Energy Cooperative Connections* as part of their electric cooperative membership. The purpose of *Sioux Valley Energy Cooperative Connections* is to provide reliable, helpful information to Sioux Valley Energy members on electric cooperative matters and better living.

**Subscription information:** Sioux Valley Energy members devote 50 cents from their monthly electric payments for a subscription. Non-member subscriptions are available for \$12 annually. Periodicals Postage Paid at Colman, SD 57017 and at additional mailing offices.

**POSTMASTER:** Please send address changes to *Sioux Valley Energy Cooperative Connections*, PO Box 216, Colman, SD 57017; telephone 605-534-3535; toll free 800-234-1960.

How to contact us: Phone: 1-800-234-1960  
e-mail: sve@siouxvalleyenergy.com  
Website: www.siouxvalleyenergy.com

In accordance with Federal civil rights law and U.S. Department of Agriculture (USDA) civil rights regulations and policies, the USDA, its agencies, offices and employees, and institutions participating in or administering USDA programs are prohibited from discriminating on the basis of race, color, national origin, age or disability. Remedies and complaint filing deadlines vary by program or incident.

Persons with disabilities who require alternative means of communication for program information (e.g. Braille, large print, audiotape, American Sign Language, etc.) should contact the responsible Agency or USDA's TARGET Center at (202) 720-2600 (voice and TTY) or contact USDA through the Federal Relay Service at (800) 877-8339. Additionally, program information may be made available in languages other than English.

To file a program discrimination complaint, complete the USDA Program Discrimination Complaint Form, AD-3027, found on-line at [http://www.ascr.usda.gov/complaint\\_filing\\_cust.html](http://www.ascr.usda.gov/complaint_filing_cust.html), and at any USDA office, or write a letter addressed to USDA and provide in the letter all of the information requested in the form. To request a copy of the complaint form, call (866) 632-9992. Submit your completed complaint form or letter to USDA by:

- (1) mail: U.S. Department of Agriculture  
Office of the Assistant Secretary for Civil Rights  
1400 Independence Avenue, S.W.  
Washington, D.C. 20250-9410
- (2) fax: (202) 690-7442; or
- (3) email: [program.intake@usda.gov](mailto:program.intake@usda.gov)

**Sioux Valley Energy is an  
equal opportunity provider and employer.**

# DONATION DRIVE FOR KIDS BEGINS

Sioux Valley Energy members can help area kids through the Cooperative's third annual Tree of Giving Hope drive. This year, the Cooperative will be collecting **new pillows, new twin-sized sheet sets, and new twin-sized comforters** for the Sleep in Heavenly Peace organization which builds beds for children and families in need. Learn more about Sleep in Heavenly Peace at <https://shpbeds.org/>.

To participate in the 2023 campaign, SVE members can bring donations to one of SVE's offices during business hours (7:30 a.m. to 4:30 p.m.) by December 21 and receive a small gift in return.


### SIOUX VALLEY ENERGY OFFICE DROP OFF LOCATIONS:


**Brandon Service Center:** 108 N Heritage Road, Brandon

**Colman Headquarters:** 23491 471st Ave. Colman, SD 57017

**Hartford Service Center:** 1185 Ruud Trl. #4, Hartford (office closes at 4 p.m.)

**Pipestone Service Center:** 1102 7th St SE, Pipestone, MN






**SIOUX VALLEY ENERGY**  
A Sustainable Energy Cooperative

Visit us at: [www.siouxvalleyenergy.com](http://www.siouxvalleyenergy.com)

# TREE OF GIVING HOPE

This year's Tree of Giving Hope Donation Drive will benefit Sleep in Heavenly Peace. SHP is dedicated to building, assembling and delivering top-notch bunk beds to children and families in need.

New pillows, twin-sized sheet sets, and twin-sized comforters will be collected at Sioux Valley Energy Offices through Dec. 21.



SLEEP IN HEAVENLY PEACE

(800) 234-1960 @SVECOOP SIOUX-VALLEY-ENERGY @SIOUXVALLEY

*Sioux Valley Energy is an equal opportunity Provider and Employer.*

# Be Prepared for Winter Driving

### Prepare Your Car for Winter

In addition to annual maintenance, here are some tips to winterize your car:

- Test your battery; battery power drops as the temperature drops
- Make sure the cooling system is in good working order
- Have winter tires with a deeper, more flexible tread put on your car
- If using all-season tires, check the tread and replace if less than 2/32 of an inch
- Check the tire pressure; tire pressure drops as the temperature drops
- Check your wiper blades and replace if needed
- Add wiper fluid rated for -30 degrees
- Keep your gas tank at least half full to avoid gas line freeze

Remember to keep your car's emergency preparedness kit fully stocked, too.

### Before You Start Out

- Clean your car's external camera lenses and side mirrors
- Remove dirt, ice and snow from sensors to allow the assistive-driving features, like automatic emergency braking, to work
- In frigid weather, you may want to warm up the car before you drive
- To prevent carbon monoxide poisoning, never leave a vehicle running in your garage – even with the garage door up
- If the forecast looks iffy, wait out the storm; if you must travel, share your travel plans and route with someone before you leave

### How to Avoid a Crash

#### AAA offers the following driving tips:

- Avoid using cruise control in wintry conditions
- Steer in the direction of a skid, so when your wheels regain traction, you don't have to overcorrect to stay in your lane
- Accelerate and decelerate slowly
- Increase following distance to 8 to 10 seconds
- If possible, don't stop when going uphill

If visibility is severely limited due to a whiteout, pull off the road to a safe place and do not drive until conditions improve.

Avoid pulling off onto the shoulder unless it is an absolute emergency. Limited visibility means other vehicles can't see yours on the shoulder.

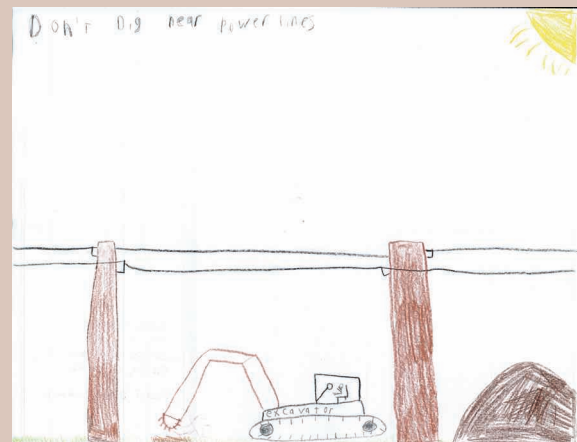
### Know Your Car's Capabilities

**My Car Does What?** is a national campaign to help educate drivers about the safety features built into vehicles. Search for your car and find out what safety features are already built in.

Traction control is now standard on most new vehicles. This function helps your vehicle gain traction on snowy, icy or wet surfaces, particularly when accelerating from a stopped or slowed position, or when trying to make it up a slippery hill.

Anti-lock braking system (ABS) helps you steer in emergencies by restoring traction to your tires and is standard on most new vehicles. ABS may vibrate or pulse when engaged. This is normal. Continue to press and hold pressure to the brake pedal.

Remember, you are your car's best safety feature. Take precautions to ensure you arrive safely at your destination. If you become stranded in an unfamiliar area, do not leave your car. Light flares in front and behind the car and make sure the exhaust pipe is not blocked by snow, mud or objects.



### Don't Dig Near Power Lines

#### Hayes Schomp, Age 10

Hayes Schomp cautions people to be careful where they dig. Hayes is the son of Thad and Devan Schomp from Eklton, S.D., members of Sioux Valley Energy.

Kids, send your drawing with an electrical safety tip to your local electric cooperative (address found on Page 3). If your poster is published, you'll receive a prize. All entries must include your name, age, mailing address and the names of your parents. Colored drawings are encouraged.



# HOLIDAY FAVORITES

## OYSTER STEW

### Ingredients:

- 1 qt. medium/large oysters
- 1 medium onion (diced)
- 2 qts. half and half
- 1 can cream of mushroom soup
- 1 lb. real butter (no cheating here)
- 3 tbsps. Worcestershire Sauce

### Method

Before you know it, Christmas Eve will be here so get ready the traditional Oyster Stew. In a saucepan, saute onions and oysters with the butter. Simmer until the oysters crinkle. In a crock pot, add half and half, cream of mushroom soup, and Worcestershire Sauce. Then, add the oysters, onion and butter. Season to taste with fresh ground black pepper and salt. Simmer for six hours on low heat (high heat will curdle the milk). Serve with oyster crackers.

Kari Larson Reder  
Warner, S.D.

## BETTER THAN CANDY PIE

### Ingredients:

- 1 nine in. chocolate ready crust
- 1 cup sliced bananas
- 1/4 cup chopped, dry roasted peanuts
- 1 small pkg. instant butterscotch pudding
- 2/3 cup dry milk
- 1 1/4 cups water
- 2 tbsps. peanut butter
- 3/4 cup whipped topping
- 2 chocolate graham crackers, chopped

### Method

Mix together dry milk, pudding, and water with wire whisk. Add peanut butter. Cover bottom of pie crust with bananas. Spread pudding mixture over bananas. Spread whipped topping next. Sprinkle with chopped peanuts and chopped graham crackers.

Janet Ochsner  
Box Elder, S.D.

## CHRISTMAS CRACK BARK

### Ingredients:

- 1 sleeve saltine crackers, (about 35 crackers)
- 1 cup unsalted butter
- 1 cup firmly packed light brown sugar
- 1/8 tsp. sea salt
- 1 1/2 tpsps. pure vanilla extract
- 1 pkg. (10 12 oz.) chocolate chips, semi sweet, milk or dark chocolate

### Method

Preheat oven to 400°F. Line a large baking sheet with parchment paper or foil. Spray lightly with no-stick cooking spray. Arrange crackers on baking sheet in single layer so that the edges almost touch. Heat butter and brown sugar in two-quart saucepan on medium heat. Bring mixture to a boil, stirring frequently. Simmer two to three minutes. Remove from heat; stir in salt and vanilla. Pour caramel sauce over crackers and spread to evenly coat crackers. Bake six minutes. Remove pan from oven. Sprinkle chocolate chips over caramel layer. Let stand five minutes. Spread chocolate chips into an even layer on top of caramel. Refrigerate 2 hours or freeze 30 to 45 minutes or until firm. Break or cut into pieces to serve. Store in an airtight container in the refrigerator up to one week.

[McCormick.com](http://McCormick.com)

Please send your favorite recipes to your local electric cooperative (address found on Page 3). Each recipe printed will be entered into a drawing for a prize in December 2023. All entries must include your name, mailing address, phone number and cooperative name.

# The Great Go Electric! Giveaway Energy Makeover Contest



**Sheila Gross**  
Energy Services  
Specialist

**Contact Sheila Gross** at [sheila.gross@siouxvalleyenergy.com](mailto:sheila.gross@siouxvalleyenergy.com) to learn more. Check out our rebates and incentives here:



Part of what we do at the Cooperative is educating members and providing programs related to the benefits of electric technologies and the opportunities that switching to electric can give. To celebrate the giving season and the benefits of electricity, we invite you to sign up for a chance to win **Go Electric!** products as part of the Energy Makeover Contest.

## GO ELECTRIC! FOR YOUR YARD/LAWN CARE AND TOOLS

Switch out old gas-powered tools and equipment to electric products to save you money and offer cleaner operation with less smell, noise, and maintenance along with the convenience of charging the battery-operated equipment at home. **Go Electric!** for your next snowblower, lawnmower, trimmer, leaf blower, chain saw, and other tools. Enter for a chance to win an EGO 24-inch two-stage snowblower.

## GO ELECTRIC! TO CLEAN YOUR HOUSE WHILE YOU RELAX

Spend less time on those pesky daily chores to have more quality time to enjoy whatever you want. The conveniences of intelligent technologies like smart vacuums can do the work for you. They learn your cleaning habits and suggest schedules to meet your needs. Enter for a chance to win an iRobot 694 Roomba vacuum. It can run up to 90 minutes before automatically docking and recharging, which can help a member on SVE's time of use rate avoid traditional vacuuming during on-peak hours.

## GO ELECTRIC! FOR COOKING:

Lots of trendy electric kitchen appliances



can save you time and hassle, help you cook healthier, and save money on your energy bills. Things like air fryers, microwaves, pizza ovens, and slow cookers are designed to make life more convenient. They also use less energy than your regular stove. In the summer, cooking on a grill or outdoor griddle eliminates the mess and extra dishes in the house and avoids raising the temperature inside your home. This reduces the need to bump up your air conditioner. Enter for a chance to win two great items: an Instant Brands Vortex 8-quart air fryer and Blackstone 22-inch electric non-stick tabletop griddle.

## GO ELECTRIC! FOR TRANSPORTATION AND RECREATION

Transportation and recreational vehicles are also evolving into being electrified. Not only are they viewed as more environmentally and maintenance-friendly, but they can save you money and provide a quiet, smooth operation with quick acceleration, making them fun to drive. With the boost of an electric motor, E-bikes enable people of all ages to enjoy more adventures. Your kids or grandkids will enjoy this giveaway – enter for a chance to win a Razor Rock Electric Ride-On Motocross Bike recommended for ages 13 and up.

# REGISTER TO WIN

Register by **December 31, 2023**, to win the prizes listed above.

Name: \_\_\_\_\_  
 Address: \_\_\_\_\_ City: \_\_\_\_\_ State: \_\_\_\_\_ ZIP: \_\_\_\_\_  
 Account #: \_\_\_\_\_ Phone #: \_\_\_\_\_ Email: \_\_\_\_\_

**Mail this form to:** Sioux Valley Energy, PO Box 216, Colman, SD 57017



# SAVINGS ADD UP

## SVE Members Save with Co-op Connections® Card

Sioux Valley Energy is a Touchstone Energy® Cooperative. So what does that exactly mean? A touchstone is a rock that was used to identify precious metals such as gold—it was basically the gold standard for miners. For SVE, it symbolizes the criterion for the qualities of the Cooperative. Twenty-five years ago, a group of electric cooperatives banded together to develop a network that would help make co-ops stronger and develop a “gold-standard” for their industry... they called themselves “Touchstone Energy” Cooperatives.

Launched April 4, 1998, the brand is continuously evolving to better meet the needs of co-ops. Touchstone Energy programs support communications, economic development, member and employee education, community engagement, and beneficial electrification programs. The founding values of Touchstone Energy still resonate two plus decades later--integrity, accountability, innovation and commitment to community. These four values are the foundation of every service the Co-op provides its members each day.

One of the benefits of being a Touchstone Energy Cooperative is that Sioux Valley Energy can take part in the Co-op Connections® Card program. This program offers a tangible asset for co-op members. It provides local, regional and national discounts for goods and services. These partnerships help members realize immediate benefits of being a member of a Touchstone

Energy Cooperative. **In this edition of the magazine, there is an insert which includes a full list of all the local businesses that are offering our members a special discount—it’s a benefit you receive for being a member of a Touchstone Energy Cooperative!**

To access the card, log on to <https://www.siouxvalleyenergy.com/co-op-connections-card> or scan the QR code listed on this page.



**Co-op Connections® Card**

**SIoux VALLEY ENERGY**  
A Touchstone Energy® Cooperative

Visit [Connections.coop](https://www.siouxvalleyenergy.com/co-op-connections-coop) to Save

SAVE ON  
- DINING  
- TRAVEL  
- HEALTH  
+ MUCH MORE

LOCAL  
AND  
NATIONAL  
DISCOUNTS

DOWNLOAD  
TODAY

## LIGHT PARADE



# BRINGING THE LIGHT

## Electric Cooperatives Spread Holiday Cheer

**Frank Turner**

[frank.turner@sdrea.coop](mailto:frank.turner@sdrea.coop)

While Santa's elves are hard at work at the North Pole, South Dakota's electric cooperatives are working to bring their own magic to their local neighborhoods, illuminating local parades with festive lights. Black Hills Electric Cooperative is just one of many examples of how a co-op can not only bring light but also creativity to their community.

Every December, Black Hills Electric crafts an exceptional float for the annual Custer Parade of Lights. For Bill Brisk, the manager of operations at Black Hills Electric, the parade isn't merely an event – it's a cherished tradition for their co-op.

As the parade approaches, the Black Hills Electric workshop bustles with

activity, mirroring Santa's very own workshop. Guided by a design from Brisk, linemen and staff assemble their unique Christmas float – crafting, welding and fabricating many of their designs from scratch.

“Just a few nights before the parade, we host a family night where we bring out the families of our employees,”





said Brisk. “The co-op provides food and drinks and we all work together to finish the float.”

In just two weeks, the co-op repurposes discarded equipment and scrap parts into creative masterpieces. One year, the co-op created an oversized shopping cart from old pipe laying around the shop. The next, they used retired meter loop pipes, guy wires, and meter covers to create palm trees and coconuts for a beachside Santa scene. Even Willie Wirehand, the co-op’s safety mascot, has been outfitted for a festive float. Despite being fabricated from old parts, the end result is always something worthy of a debut at the North Pole.

“Most everything we do is built in our shop.” said Brisk. “We do all

of the fabrications ourselves, and we haven’t had a flop yet.”

Luckily, the co-op’s efforts haven’t gone unnoticed. Since 2015, they’ve clinched an award every year at the Custer Parade with the only exceptions being 2020 and 2021 when the pandemic halted festivities. Their trophy collection holds a wide range of awards, boasting awards like the Rudolph’s Choice Award, Best Light, Best Music and most recently, the Custer Fruit Cake Award.

Dawn Murray, the executive director of the Custer Chamber of Commerce, expressed her admiration. “They really go all out. Beyond the parade, they even participate in our scarecrow decorating contest. I remember one year they had a scarecrow up in a

bucket truck, which was really cool.”

Yet, for Black Hills Electric, Custer is just the beginning. The co-op has grand visions for a broader festive footprint. With a service area that stretches from just south of Terry Peak to Nebraska, Brisk sees even more opportunities to shower communities with holiday cheer.

“It’s a festive time of year and something that we want to extend out to different towns in our service territory,” said Brisk. “Seeing the kids’ eyes brighten when we light up our float for the first time really makes the whole thing worth it, and if we can spread that to more of our members, all the better.”



# UTILITY ASSISTANCE PROGRAMS

If you are having trouble paying your electric bill, the following assistance programs may be able to help. Members need to call the agencies directly to apply for assistance.

Sioux Valley Energy's goal is to help you avoid disconnection of electric service, so please call us at 1-877-511-8062 so we can work together to develop an acceptable payment plan.

## MINNEHAHA COUNTY

- **LIEAP, Low Income Energy Assistance Program** – 1-800-233-8503
- **Minnehaha County Human Services** – 605-367-4217
- **Minnehaha Community Outreach** – 605-331-3935
- **Minnehaha County Salvation Army** – 605-332-2331
- **Sioux Falls Interlakes Community Action** – 605-334-2808
- **First Call for Help** – 211

## BROOKINGS COUNTY

- **LIEAP, Low Income Energy Assistance Program** – 1-800-233-8503
- **Brookings County Welfare Office** – 605-696-8261
- **Brookings County Community Action** – 605-692-6391
- **Brookings County Salvation Army** – 605-692-8863
- **My Neighbor** – 605-691-3225
- **First Call for Help** – 211

## KINGSBURY COUNTY

- **LIEAP, Low Income Energy Assistance Program** – 1-800-233-8503
- **Interlakes Community Action** – 1-605-651-2421
- **First Call for Help** – 211

## LAKE COUNTY

- **LIEAP, Low Income Energy Assistance Program** – 1-800-233-8503
- **Interlakes Community Action** – 605-256-6518

- **Lake County Welfare** – 605-256-7619
- **First Call for Help** – 211

## MOODY COUNTY

- **LIEAP, Low Income Energy Assistance Program** – 1-800-233-8503
- **Interlakes Community Action** – 1-605-651-2421
- **Flandreau Santee Sioux Tribal Office** – 605-997-3891
- **First Call for Help** – 211

## PIESTONE COUNTY

- **Southwestern MN Opportunity Council** – 1-800-658-2444
- **Southwest Health & Human Services** – 1-888-837-6713
- **The Salvation Army Heat Share** – 800-842-7279
- **Pipestone County Veterans Administration** – 507-825-1171
- **MN Department of Energy Services** – 800-657-3710
- **First Call for Help** – 211

## ROCK COUNTY

- **Southwestern MN Opportunity Council** – 1-800-658-2444
- **Southwest Health & Human Services** – 1-888-837-6713
- **The Salvation Army Heat Share** – 800-842-7279
- **Rock County Veterans Administration** – 507-283-5061
- **MN Department of Energy Services** – 800-657-3710
- **First Call for Help** – 211



## HOLIDAY CHEER

Sioux Valley Energy is spreading holiday cheer in several communities this year. We'll once again be decorating a tree and assisting with the Lighting at the Lodge event in Pipestone.

You'll also find our employees at Parades of Lights in several communities:

- **Brandon Parade of Lights**, 5:30 p.m. Nov. 25
- **Madison Parade of Lights**, 5:30 p.m. Dec. 2
- **Colman Looney Lights Parade**, 6 p.m. Dec. 2
- **Hartford Parade of Lights**, 5:30 p.m. Dec. 3

## EMPLOYEES RAISE FUNDS FOR AREA UNITED WAY ORGANIZATIONS

Sioux Valley Energy employees tried their hand at a charity dart game benefiting four area United Way organizations at their recent Safety Meeting. More than \$8,700 was raised and distributed to the following United Way organizations: Pipestone Area, Brookings Area, Interlakes, and the Sioux Empire.





# CAPITAL CREDIT REFUND

## Included on December Bill

At the end of each year, if Sioux Valley Energy has received more revenue than was necessary to cover expenses, the difference is allocated back to members as capital credits based on their share of electricity purchased.

When the Co-op's financial condition permits, the Board of Directors may decide to retire, or pay back, some of the capital credits. This year, the Sioux Valley

Energy Board of Directors approved a \$2.19 million general capital credit retirement – retiring the balance of capital credits from the year 2000 as well as a portion of capital credits for the years 2001 and 2022.

Capital credits are returned to current and former members. For current members, this will be applied as a credit on bills mailed in December.

Meter #	Rate Description	Billing Period		Readings		Diff	Meter Mult	Energy (kWh)	Demand (kW)
		From	To	Previous	Present				
99999	RURAL RES	11/01/2023	12/01/2023	63744	64379	635	1	635	5.550

Account Activity		
Previous Balance		\$134.00
Payment(s) Received		-\$134.00
<b>Account Balance Before Current Charges</b>		<b>\$0.00</b>

Current Charges		
Energy Charge	635 kWh @ 0.10260	\$65.15
Demand Charge	5.550 kW @ 0.000	\$0.00
Basic Service		\$55.00
<b>Capital Credit Retirement</b>		<b>-\$4.66</b>
<b>Sub Total</b>		<b>\$115.49</b>
Taxes		\$5.05
Operation Roundup		\$0.46
<b>Total Current Charges Due</b>		<b>\$121.00</b>

Total Amount Due	
	<b>\$121.00</b>

*Accounts past due 10 days after the due date are subject to a late fee of \$5.00 or 1.5%, whichever is greater. A \$30.00 fee will be assessed for all returned checks. A security deposit may be applied to accounts not in good standing.*

**RETIREMENT:** Capital credit refunds will be applied to bills mailed in December to members who were members in 2000, 2001, and 2022.

# IS YOUR CONTACT INFO UPDATED?

Do you want to receive your newsletter electronically?

Scan the QR code or call us at 800-234-1960 to update your phone number or email address.

Visit us at: [www.siouxvalleyenergy.com](http://www.siouxvalleyenergy.com)





Garretson Childcare helpers are getting ready to help grow their daycare.

# REED FUND

## Powering Your Community

**Shannon Marvel**

shannon.marvel@srea.coop

The community development financial institution powered by rural electric cooperatives in South Dakota is about to reach a major milestone.

The (Rural Electric Economic Development) Fund's total dollar amount in projects impacted is anticipated to reach \$1 billion by the end of 2023, according to Eric Fosheim, Economic Development Manager for REED.

REED also exceeded 10,000 in jobs impacted (created or retained) since its creation in 1996.

"Currently, we sit at just over \$998 million in total projects impacted," Fosheim said in October.

The REED Fund is a 501(c)3

corporation and operates as a revolving loan fund that provides financing for economic development projects in rural areas.

Those projects that receive REED Fund dollars must promote growth and be a catalyst in creating more business, wealth and job opportunities within the rural community. The projects are also expected to improve infrastructure and economic base in rural areas.

The REED Fund provides financing from the federal government and other lender, in addition to revolving interest payments collected over the years. The REED Fund does not use money generated by electric rate charges.

Fosheim said that as of September 30, REED has issued 401 loans for a total of \$125.26 million.

"This includes \$104,174,418 in loans made using REED dollars and \$21,082,793 from the USDA Rural Economic Development Loan and Grant program," Fosheim said.



Central Electric General Manager Ken Schlimgen, left, delivers REED funding to Mitchell Technical College.



Fosheim said it isn't entirely surprising that the \$1 billion was hit this year.

"REED has seen steady growth over the years, but typically sees higher than normal application volume in times of rising interest rates. In addition, costs are rising as well, so total project costs for each individual project have been higher as well.

Dakota Energy General Manager Chad Felderman has been on the REED Fund board since 2018.

He said the impact the REED Fund has on local communities is unique, noting that the businesses the fund helps aren't necessarily ones that Dakota Energy provides electricity to, but are ones that help our communities, "which in turn helps our members where they live," he said.

"It is gratifying to help our hospitals, fire departments, and schools purchase equipment so our small communities can provide those essential services," Felderman said.

One of those projects funded by REED is the Huron Regional Medical Center dialysis building.

"We are proud to support HRMC in sustaining and expanding local access to critical medical services right here in our community," Felderman said.

Douglas Electric Cooperative General Manager Jay Spaans echoed Felderman's sentiment, noting that the REED Fund is special because co-ops get to loan money to businesses that they don't always serve.

"For us, it is just about making

improvements in the community. Sure, we would like to serve the load, but even if the new load doesn't reside in our territory, we still will fund the loan," Spaans said.

"It is all about the greater good for our communities."

West River Electric CEO Dick Johnson also serves on the REED Fund board. He's one of the first board members to represent a co-op in the western part of the state. The REED Fund was originally set up by co-ops in eastern South Dakota. After two decades of successful growth and development, the REED Fund decided to allow co-ops in western South Dakota to join in 2017. Johnson said West River Electric was one of the first western co-ops to be accepted into the REED Fund.

"It was one of the best things we could ask for. We were struggling with our own revolving loan fund but we had primarily loaned to government entities, no businesses," Johnson said.

"When we became members of REED that gave us another tool in our toolbox to offer our members who were interested in our area or needed to expand their businesses or infrastructure."

West River Electric hasn't had many loans, but Johnson is still encouraged by what he's seen as a board member.

"Sitting on the Board and seeing the applications and the impact we are having on the economy of small towns all over South Dakota is phenomenal," Johnson said.

Johnson had high praise for the folks at the REED Fund office in Madison, calling

them a "class act" who really understand the region's rural areas.

"They work hard to say yes and somehow make it work. The fact that the local co-op board can help make the decision to move a project forward is unheard of – real boots on the ground who are in the communities we serve and understand what is needed to thrive," Johnson said. "It is a unique model just like the cooperative business model."

## Did You Know

From 2018 to 2022, electric cooperatives in South Dakota spent \$5.7 Billion on capital investment, operations, and maintenance activities and retired \$102.8 Million in capital credits paid to consumer-members.

Through these expenditures, co-ops drive economic benefits in their local communities and throughout the state.

Over the five-year period, electric co-ops in South Dakota are responsible for:

### STATEWIDE IMPACT

- \$4.2 Billion to South Dakota's Gross State Product (GSP)
- An average of 5,848 jobs in South Dakota each year
- \$2 Billion in labor income in South Dakota
- \$194.1 Million in federal taxes
- \$423 Million in state taxes
- \$418.4 Million in local taxes

All of these impacts occur in counties where electric cooperatives operate, showcasing the substantial local economic benefits that co-ops provide in the communities they serve.



Participants celebrate the groundbreaking for the National Music Museum in Vermillion.



# EMPOWER ENERGIZES

## 43 Area Students Take Part in SVE's Youth Leadership Program

EmPOWER Youth Leadership is off to an energetic start to the season. The program, which launched in 2014, has provided training to youth on leadership, the co-op business model and opportunities for career exploration. More than \$50,000 in scholarships have been provided through EmPOWER over the years.

This year's EmPOWER program will include sessions on character, the Clifton Strength Finders assessment, Co-op 101 and much more according to program coordinator, Chinelle Christensen.

"This year is filled with many opportunities for the

students to interact and build relationships with each other. An EmPOWER favorite, Craig Hillier, will be back to take the students on a journey to becoming a person of impact," said Christensen.



She added, "New this year we have Melissa from Oh My Cupcakes and the Humanity Launch located in Sioux Falls. It's so important to expose these students to success stories of leaders right within our own communities. We also will have our netweaving session which gives students the opportunity to talk with professionals about their careers."

Each year, an advisory council made up of EmPOWER students from the previous year helps plan the sessions. This year's group include: Taylor P., Pipestone Area School, Thomas R., Brandon Valley HS, Lily F., Chester Area HS, Naomi W., Pipestone Area School and, Daniela L., Colman-Egan HS.





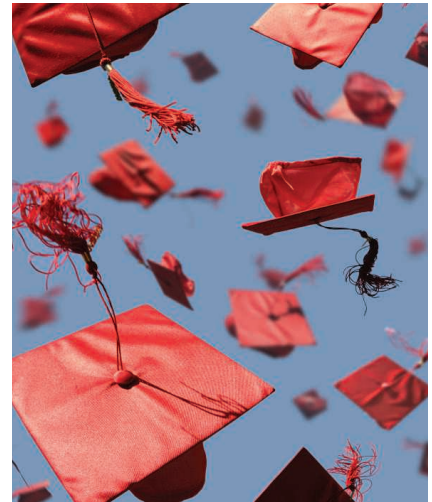
# SCHOLARSHIPS OFFERED

Application deadline is January 12

Sioux Valley Energy is offering \$20,000 worth of scholarships to eligible graduating high school seniors or first time attendees at an institution of higher education. These scholarship funds also include a designated scholarship to an individual attending power line school. Applications that are hand delivered must be in one of the SVE offices no later than 4 p.m. on Friday, January 12, 2024. Mailed applications must be postmarked by January 12, 2024.

Applicants must be a child or dependent of a Sioux Valley Energy member. Applications will be judged on the basis of grades, work experience, school activities, volunteer community service, and an essay question. The majority of the scholarship funding comes from Operation Round Up® with additional monies from Basin Electric Power Cooperative and L&O Power Cooperative.

Scholarship submittal requirements are listed on the forms. Applications are available at local school counselor offices or online at: <https://www.siouxvalleyenergy.com/youth-scholarship-programs>



# 2024 DISTRICT MEETINGS SET

The Sioux Valley Energy Board of Directors approved the 2024 District Meeting schedule during their September meeting. Three elections will take place in Districts 1, 3, and 8.

Members interested in running for the Board must submit a Director Petition, Conflict of Interest Statement, and Qualification Certification 60 days prior to the meeting date. Petitions must be delivered to a Sioux Valley Energy office location or postmarked by the petition deadline. Sioux Valley Energy encourages members to gather extra member signatures and to deliver or mail completed petitions in advance of the petition deadline to ensure time for member verification.

**PETITION DEADLINES ARE AS FOLLOWS:**

- District 3 – Thursday, December 28, 2023
- District 1 – Thursday, January 25, 2024
- District 8 – Friday, January 26, 2024

Petitions can be obtained at [www.siouxvalleyenergy.com](http://www.siouxvalleyenergy.com) or by calling 800-234-1960. The Cooperative Bylaws state the qualifications needed to be a director. Interested members are encouraged to contact Brenda Schelhaas, Executive Assistant. All Board seats elected in 2024 will serve three-year terms.

Date	District	Director	Location
Thursday, February 22	4	Daniel	Dakota Prairie Playhouse Madison, SD
Monday, February 26*	3	Heinemann*	William J Janklow Comm. Center Flandreau, SD
Tuesday, February 27	5	Weinacht	Taopi Hall Colton, SD
Thursday, February 29	10	Roskamp	Edgerton Public School Edgerton, MN
Monday, March 11	6	Fish & Rogen	Brandon Valley High School Brandon, SD
Tuesday, March 12	7	DeMent	West Central School Hartford, SD
Thursday, March 14	9	Johnson	Pipestone Area High School Pipestone, MN
Thursday, March 21	2	Vostad	Sioux Valley School Volga, SD
Monday, March 25*	1	DeGreef*	Elkton Community Center Elkton, SD
Tuesday, March 26*	8	Leuthold*	Generations (Grand Prairie Event Center) Luverne, MN

\*Denotes election meetings.



**Dec. 14-17**  
**Christmas at the Cathedral**  
 521 N Duluth Avenue,  
 Sioux Falls, SD  
 605-988-3765

**DEC. 2**  
**Tabor Parade of Lights**  
 Vendor Fair  
 4 p.m.  
 Parade of Lights  
 5:30 p.m.  
 Ham Drawing  
 7:30 p.m.  
 Tabor, SD

**DEC. 2**  
**Julefest Scandinavian Christmas Festival and Bazaar**  
 8 a.m.  
 Our Saviors Lutheran Church  
 Spearfish, SD

**DEC. 3**  
**Hartford's Hometown Christmas**  
 7:30 a.m.  
 Hartford, SD

**DEC. 8-9**  
**Alexandria's Winter Festival**  
 5 p.m.  
 Alexandria, SD

**DEC. 8-9**  
**Junkin' Market Days**  
 W.H. Lyon Fairgrounds Expo Center  
 Sioux Falls, SD

**DEC. 9**  
**Parade of Lights**  
 5:30 p.m.  
 Wessington, SD

**DEC. 10**  
**Hill City Senior Saturday Breakfast**  
 Hill City Center  
 Hill City, SD

**DEC. 17**  
**Christmas Cantata**  
 3 p.m.  
 Hermosa United Church of Christ  
 Hermosa, SD

**NOV. 24**  
**Parade of Lights**  
 7 p.m.  
 Dakota Avenue  
 Huron, SD

**NOV. 25**  
**Mid-Winter Fair**  
 Gregory Auditorium  
 Gregory, SD  
 605-830-9778

**NOV. 30**  
**Christmas on the Prairie**  
 5 p.m.  
 Miller, SD

**NOV. 30-DEC. 3**  
**Hatchery Holidays**  
 D.C. Booth Fish Hatchery  
 Spearfish, SD

**DEC. 1-2**  
**Christmas in the Hills**  
 Hot Springs, SD

**DEC. 1-30**  
**Trees and Trains Exhibit**  
 SD State Railroad Museum  
 Hill City, SD

**DEC. 1-30**  
**Holiday Express and Holiday Express Spiked**  
 1880 Train  
 Hill City, SD

**DEC. 2**  
**Rapid City Garden Club's 62nd Annual Wreath and Centerpiece Sale**  
 8 a.m.  
 Central States Fairgrounds  
 Rapid City, SD

**DEC. 2**  
**6th Annual Holiday Party, Tour of Homes, Silent Auction**  
 4 p.m.  
 Olive Grove Golf Course  
 Groton, SD

**DEC. 2**  
**Parade of Lights**  
 6 p.m.  
 Redfield, SD

To have your event listed on this page, send complete information, including date, event, place and contact to your local electric cooperative. Include your name, address and daytime telephone number. Information must be submitted at least eight weeks prior to your event. Please call ahead to confirm date, time and location of event.

**Note: Please make sure to call ahead to verify the event is still being held.**





# SHOP LOCAL.

Because Co-op Connections® helps you save big and enjoy more.

The One Card that Does it All®.

As a member of Sioux Valley Energy you can use your Co-op Connections Card to receive discounts at local businesses! Download the Cooperative Connections Card app and use it when you go shopping, dine out, or get a needed service.

Co-op Connections® Card



**SIoux VALLEY ENERGY**  
A Touchstone Energy® Cooperative

Visit [Connections.coop](http://Connections.coop) to Save

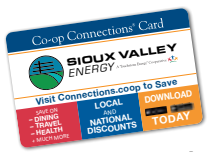
SAVE ON  
- DINING  
- TRAVEL  
- HEALTH  
+ MUCH MORE

LOCAL AND NATIONAL DISCOUNTS

DOWNLOAD TODAY



Scan this code to access the Sioux Valley Energy website where you can download the Cooperative Connections Card app for mobile devices.



The Co-op Connections Card is a partnership between Sioux Valley Energy (your Touchstone Energy® Cooperative) and local businesses! Each member receives the Co-op Connections Card free. There's no sign-up. No annual fees. **You get your Co-op Connections Card simply because you're a member of Sioux Valley Energy.** Scan one of the QR codes on this

brochure or download the app. Just go to your iPhone or Android store and search for 'Co-op Connections'. You will need to register. National discounts are also available for prescriptions, health services, hotels, concert and sporting events, insurance, and travel! In addition, you can shop on-line and get cash back from over 3,000 retailers. Log on to [www.connections.coop](http://www.connections.coop) today to start saving!

## Arlington

**Bits of Yesterday Antique Mall:** 10% OFF  
**Flowers by Betsy:** Free carnation with purchase

## Brandon

**3 Degrees Infrared Sauna Studio:** A weekly pass for \$49  
**Anytime Fitness:** FREE 7 day pass and 30 days of FREE training sessions with membership

### Brandon Ace Hardware:

January-June – \$10 OFF of a purchase of \$50 on regular-priced items.  
July-December – \$5 OFF of a purchase of \$25 on regular-priced items.

**Brandon Golf Course:** 18 holes for the price of 9 holes (weekdays only)

**Fit for Life Chiropractic, LLC:** 20% OFF nutrition/ in office products and FREE Consultation on Shockwave/Decompression

**Harry Buck-Hegg Realty:** FREE market analysis

**Heartland Funeral Home:** \$500 DISCOUNT off any traditional funeral service or pre-paid traditional plan

**Holiday Inn Express & Suites-Brandon:** 5% OFF any non-discounted room rate

**Jones Family Eyecare:** 10% OFF glasses

**Love That Look:** 15% OFF any product

**Rivers Edge Decorative Concrete LLC:** FREE sealer with any stamped concrete installation

**Splitrock C-Store:** 10 cents OFF per gallon of gas purchase

**Sunshine Foods:** One FREE gallon of Sunshine milk (1% or skim) with \$100 purchase. Limit one use per customer per day. PLU #10200

**Taco John's:** FREE churro with the purchase of combo meal

**Tailgator's:** Buy 2 entrees get a FREE dessert

**Today's Family Dentistry:** 15% OFF dental work paid in full day of service. Must show card at time of service. Not valid with any other discounts.

**Wilde Prairie Winery:** 2 wine tastings for the price of 1, 10% DISCOUNT on wine purchase

## Brookings

**The Automotive Service Center:** FREE tire rotation & disc brake inspection with purchase of an oil change

**b.beautiful hair lounge:** \$10 OFF a highlight with a haircut

**Brookings Family Dentistry:** 50% OFF custom whitening trays with an exam and cleaning

**Cubby's Sports Bar & Grill:** \$1 OFF any regular-priced starter

**Hometown Service and Tire:** \$5 OFF an oil change  
**Martin Oil:** 3 cents OFF per gallon – up to 100 gallons – purchased at our pumps

### Midwest Glass, Inc. \*

- #1) \$40 rebate OFF windshield replacement
- #2) Buy 5 professionally installed windows and get the sixth FREE
- #3) \$50 OFF custom glass shower

\*Discount must be noted at the time of order or appointment booking.

**The Optical Shop:** 25% OFF glasses

**Party Depot:** 10% OFF regular priced items. Rentals excluded.

**Perry Electric Air Conditioning & Heating:** \$100 OFF a year of planned maintenance

**Powershop Gym:** First month \$19 plus one-time \$10 key fob charge (\$39.95 after that). New Members only

**Qdoba Mexican Grill:** 15% OFF any entrée

**Schoon's Pump N Pak:** 10 cents OFF per gallon of gas purchase

**Tee'd Off Golf Simulators:** \$5 OFF for 1 hour simulator rental

### The UPS Store:

- #1) 15% OFF regular price printing services.
- #2) Additional 3 months FREE with 1 year contract on mail box rental
- #3) 25% OFF Shredding

**Young Door Service Inc:** 15% OFF parts

## Colman

**Colman Building Center, Inc:** 10% OFF regular priced products up to \$500

## Crooks

**Pump N Stuff:** \$2 OFF one large Hot Stuff Pizza

## Dell Rapids

### Dell Rapids Ace Hardware:

January-June – \$10 OFF of a purchase of \$50 on regular-priced items.  
July-December – \$5 OFF of a purchase of \$25 on regular-priced items.

**Dells Theatre LLC:** All day every Sunday-Thursday, buy any size popcorn and receive the same size drink for FREE

**Pizza Ranch:** Any large pizza for \$12

## Edgerton

**Douglas J Vermeer O.D.:** 33% OFF a second frame and lenses

**M&H Hardware:** \$1 OFF 9 watt or larger LED light bulbs (up to quantity of 10).

**Tinklenberg Lumber & Hardware:** 10% OFF the purchase of any 2 gallons of Valspar paint

## Egan

**Blue Jays:** FREE fountain pop with meal (dine in only)

## Elkton

**The Knotty Pine Supper Club:** HALF PRICE appetizer with the purchase of an entrée

## Garretson

**Nordstrom's EWE Pullet:** FREE admission

**Nordstrom's Full-Service Auto Recycling:** \$10 OFF any purchase over \$100

**Nordstrom's Installation & Diagnostic Center:** \$50 OFF any repair over \$500

## Hardwick

**VanDerBrink Auctions, LLC:** \$500 FREE advertising towards farm or land auctions

## Hartford

**Eich Law Office, Prof. LCC:** 10% OFF the preparation of estate planning documents

**Hartford Ace Hardware:**  
January-June – \$10 OFF of a purchase of \$50 on regular-priced items.  
July-December – \$5 OFF of a purchase of \$25 on regular-priced items.

**Hartford Building Center:** \$10 OFF of a \$100 regular priced purchase

**Tammen Auto & Tire Inc:** \$5 OFF an oil change, \$25 OFF of \$200 of service

## Humboldt

**N-Rich Plant Food & Fertilizer, Inc:** 5 cents OFF per pound of our signature fertilizers

## Lake Norden

### Kassy Kuts Salon:

- #1) 10% OFF any retail purchase
- #2) \$3 OFF any service
- #3) 1 FREE facial wax with a purchase of a haircut & style

## Luverne

**Brandenburg Gallery:** 20% OFF regular priced in-stock photographs & merchandise

**Busse Plumbing, Heating, & AC Inc:** 15% DISCOUNT on pre-season furnace or air conditioner inspection

**Country Cupboards of Luverne, Inc.:** FREE Estimate  
**Herb N Legend:** 10% OFF any regular priced purchase

**Luverne Power Fitness:** \$5 OFF per month on a 12-month membership

**Luverne Monuments:** \$100 OFF memorials over \$1,000  
**Pizza Ranch:** 10% OFF buffet

**Rock County Eye Clinic:** 20% OFF frames or 10% OFF annual supply of contacts

**Salon 75:** 10% OFF retail product purchases

**The Ideal Weigh, Inc:** 50% OFF the consultation fee  
**Those Blasted Things:** 7% OFF

## Madison

**Dairy Queen:** FREE drink with the purchase of a basket meal or salad

**Encore Family Store:** 10% OFF total purchase

**EXIT Realty Advantage-Adam Foland:** Home Warranty when selling or buying with EXIT Realty and a FREE Market Analysis for residential homes, lots, recreational property, and land

**Leader Printing:** 25% OFF of your sheet-fed or digital print order.

**Madison Chiropractic Center:** 10% DISCOUNT for service paid with cash (not insurance)

**Madison Family Dental, LLC:** 10% DISCOUNT day of service. Payment with check or cash only.

**Madison Vision Clinic:** 20% OFF prescription or non-prescription sunwear

**Nicky's:** FREE dish of ice cream with purchase of entrée

**Pizza Ranch:** \$4 OFF a large, single-topping pizza (Code 1070)

**Prairie Village:** Buy one train ride ticket, get one FREE (with paid admission)

**The Shepherd Shop:** 10% OFF regular priced merchandise

**We Care Dental:** 10% OFF dental work paid in full the day of service. Payment with check or cash only, must show card at time of service.

## Pipestone

**Bole-Mor Lanes Bar & Grill:** \$5 OFF lane rental

**Douglas J. Vermeer O.D.:** 33% OFF second pair of glasses

**Dynamic Health Chiropractic, Ltd.:** 20% OFF all in-stock nutrition and support products

**Geyermans Clothing Co.:** 20% OFF total purchase (regular price only)

**Luann's Gas and More:** Any fuel 5 cents per gallon DISCOUNT. Please show discount card when purchasing.

## Renner

**Monarch Steak House and Lounge:** Buy one single-serve beverage and get the same single-serve beverage for \$1. Good for one offer per day. (2 p.m.-9 p.m.)

## Sioux Falls

**24/7 Fitness & Tanning Club:** 24-hour access fitness membership rate of \$29.95/month & no joining fees

### Advanced Tech Inc:

- #1) 20% OFF service labor
- #2) 20% OFF our commercial-grade virus protection
- #3) 20% OFF of 1st year of back up services

### Arietis Tax and Business Services:

New client special: 25% OFF individual tax return or 25% OFF first month's business services

**Audiology Specialty Clinic:** 10% OFF the purchase of hearing aids and 10% OFF custom fit earplugs

**Bagel Boy:** FREE small fountain pop or small brewed coffee with any purchase

**Batteries Plus:** 10% OFF any purchase

**Big D Technology Solutions, Inc:** 25% OFF on labor for new customers only. Must mention discount.

**Carnaval Brazilian Grill:** 10% OFF regularly price tab (Wednesday and Thursday)

**ClubHouse Hotel & Suites:** 15% OFF our best available rates (STAR rate)

**Combined Pool & Spa:** 15% OFF hot tub and pool chemicals

**Crossroads Book & Music:** 20% OFF any one regularly priced item



**Dakotaland Autoglass:** 20% OFF glass replacement & rock chip repairs in shop for \$39.99

**Graham Tire Company:**

1. \$5 OFF an oil change
2. \$50 OFF any repair over \$500
3. \$40 OFF a set of regular priced tires installed

**Heartland Computers:** 10% OFF (not valid on Apple or clearance items)

**Holiday Inn Express and Suites Empire Mall:** 15% OFF any room. Not valid with special events.

**Homewood Suites by Hilton:** 10% OFF

**Honey Baked Ham Co. & Café:** \$5 OFF bone-in spiral sliced half ham or \$3 OFF turkey breast

**Hydraulic World, Inc:** 10% OFF regular priced hydraulic hose assemblies

**Interstate All Battery Center:** DISCOUNTS on all batteries, chargers, accessories, and cell phone/tablet repair

**Juice Stop:** 10% OFF any 24 oz smoothie at regular price (not valid with any other offer) 1 use per visit. Some restrictions apply

**Justice Fire & Safety, Inc.:** 10% OFF first visit, includes service/maintenance & new products

**Keller Williams Realty – Dawna Kuck:** FREE upgraded listing photo package and \$200 towards cleaning services upon listing

**Michaels Fence:** 10% OFF dog kennel panels

**Northstar Auto Glass:** 20% OFF glass replacement and rock chip repairs in shop for \$39.99

**Nothing Bundt Cakes:** 10% OFF

**Overhead Door Company of Sioux Falls:** FREE transmitter with purchase of residential or commercial door operator

**Pearle Vision:** 30% OFF frames, 20% OFF lenses on prescription eyewear only

**Pita Pit-Sioux Falls:** 10% OFF order

**Premier Auto Group:** \$250 OFF a vehicle that is \$10,000 or less and \$500 OFF a vehicle that is \$10,000 or more

**Riddle's Jewelry:** 40% OFF retail prices on one colored gemstone, Black Hills Gold, or diamond jewelry item.

\*May not be combined with other offers.

Some exclusions apply.

**Roto Rooter of Sioux Falls:** \$10 OFF per invoice

**SAFE-N-SECURE:** 10% OFF regular price

**Sparkle Uniforms:** 15% OFF uniforms, lab coats & scrubs. Website info at [www.sparkleuniform.com](http://www.sparkleuniform.com)

**Spencer Furniture & Floors:** 20% OFF any furniture

**T&A Service:** 10% OFF any service/repair excluding oil changes & tire services. Mention offer when scheduling.

**Ultimate Automotive:** 10% OFF labor, \$5 OFF an oil change (Marion Road and 77th Street locations)

**Vacuum Center LLC:** 10% DISCOUNT on all new and used vacuums in stock

**Valvoline Instant Oil Change:** 10% OFF all items and services

**Visions Eye Care:** 50% OFF frame with purchase of lenses

**Walden Carpets:** \$1 per yard discount on in-stock products

## Tea

**Neighborhood Dental:** Complimentary whitening with cleaning. For new patients only.

**Service Master of Sioux Falls:** \$10 OFF two or more rooms of carpet cleaning

**Tea Ace Hardware:**

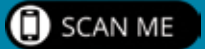
January-June – \$10 OFF of a purchase of \$50 on regular-priced items.

July-December – \$5 OFF of a purchase of \$25 on regular-priced items

## Wentworth

**Ladditude Pleasure Cruise LLC:** 10% OFF

Scan this code to access the Sioux Valley Energy website where you can download the Cooperative Connections Card app for mobile devices.



SERVING OUR MEMBERS. *Always.*

Visit us at: [www.siouxvalleyenergy.com](http://www.siouxvalleyenergy.com)



(800) 234-1960

@SVECOOP

SIOUX-VALLEY-ENERGY

@SIOUXVALLEY

Sioux Valley Energy is an equal opportunity provider and employer.