

# COOPERATIVE CONNECTIONS



## Hooked on Fishing

**South Dakota Fish  
Hatcheries**

Pages 8-9

**Methods of  
Moving Structures**

Pages 12-13

*Photo Credit:  
Markus Erk*

# What's Happening at Your Co-op?



**Tim McCarthy**  
General Manager/  
Chief Executive  
Officer

Tim.McCarthy@  
siouxvalleyenergy.  
com

As you read this, we are working our way through 10 district meetings throughout the month of March. It may be a lot to fit into a time span of about one month, but it's truly a display of the cooperative model focusing in on two cooperative principles: democratic member control and education, training, and information. District meetings give members the chance to decide who will represent them on the board of directors and hear from those individuals. We also put together a program full of information that highlights noteworthy things happening at the Cooperative. While we would love to have all our members attend district meetings, we know that is just not possible, so here is an overview of the message we gave to members this year at district meetings:

As we announced in last month's magazine, the Board is pleased to be able to hold rates steady again this year. This will be the fourth year that rates remain stable. Over the past decade Sioux Valley Energy's urban residential rates have increased only 11 percent and rural residential rates just 12 percent. To put that in perspective, according to the U.S. Bureau of Labor Statistics, the cost of bread has gone up 87 percent and ground beef has increased 123 percent during that same time period.

Both inflation and the Consumer Price Index were at record levels this past year, and that is reflected in our cost of materials. For example, the underground electric cable and poles we purchase have increased in cost by 20 percent and overhead line has gone up between 40 and 50 percent. Factor in the higher interest rates and cost of labor, along with the need to purchase equipment that had been delayed, and it results in increased pressure on electric rates.

Fortunately, there are several things that will help us counteract those pressures this year. First, we are able to utilize \$2.5 million in deferred revenue to fill in the shortfall and may be able to use the remainder of that fund next year. Second, our cost of power will also remain steady. Power supply is the number one driver in your electric rates, making up 62 percent of the budget. Finally, load growth in our service territory also plays a factor in rate stabilization because as the membership grows

and our customer density increases we are able to spread costs out over more members per mile of line. While we do anticipate the need for a rate increase sometime in the future, we plan to minimize it as much as possible, balancing that with reliability and future resources needed to serve a growing membership.

We are making plans now for those future needs. This includes updated and new electrical infrastructure, expanded offices and facilities and additional workforce. To give you some perspective on the load growth we are anticipating—Over the next 25 years we expect to add an additional 22,000 members and between 50 and 60 megawatts of electric load on our system just in Minnehaha County. We also anticipate growth around Lake Madison and additional load requirements in many rural areas as the need for electricity increases. Our current peak load is 170 megawatts and our power suppliers are planning for Sioux Valley's peak load to increase to 355 megawatts in the future. As you can see we need to start planning now to be able to support that growth because it is coming fast.

**Over the next 25 years we expect to add an additional 22,000 members and between 50 and 60 megawatts of electric load on our system just in Minnehaha County.**

To help address this issue, the Sioux Valley Energy Board of Directors recently approved an expansion to the Brandon service center. This is part of a long-range plan that may eventually include additional co-op owned facilities in western Minnehaha County. This will expand the current facility by adding offices, truck bays, a wash bay, additional space for the warehouse and a training facility for employees. Some of the space will not be used immediately. However, as we are anticipating fast paced growth, we believe an initial investment now will be more financially prudent as costs will likely increase in the future. Because we are able

**Continued on Page 3**

**COOPERATIVE****CONNECTIONS****SIoux VALLEY ENERGY**

(USPS No. 497-440)

**Board President:** Gary Fish**Board of Directors**

Dan Leuthold - Vice

President

Don DeGreef - Secretary

Dave Daniel - Treasurer

Rodney DeMent

Dr. Leslie Heinemann

Gregg Johnson

Mark Rogan

Lucas Roskamp

Ann Vostad

Allan Weinacht

**CEO/General Manager:** Tim McCarthy**Chief Financial Officer:** Jason Maxwell**V.P. of Engineering & Operations:** Ted Smith**V.P. of Human Resources****& Member Services:** Debra Biever**V.P. of Public Relations:** Carrie Vugteveen, Editor**V.P. of Technology:** Justin Moose**Executive Assistant:** Brenda Schelhaas

*Sioux Valley Energy Cooperative Connections* is the monthly publication for the members of Sioux Valley Energy, PO Box 216, Colman, SD 57017. Families subscribe to *Sioux Valley Energy Cooperative Connections* as part of their electric cooperative membership. The purpose of *Sioux Valley Energy Cooperative Connections* is to provide reliable, helpful information to Sioux Valley Energy members on electric cooperative matters and better living.

**Subscription information:** Sioux Valley Energy members devote 50 cents from their monthly electric payments for a subscription. Non-member subscriptions are available for \$12 annually. Periodicals Postage Paid at Colman, SD 57017 and at additional mailing offices.

POSTMASTER: Please send address changes to *Sioux Valley Energy Cooperative Connections*, PO Box 216, Colman, SD 57017; telephone 605-534-3535; toll free 800-234-1960.

How to contact us: Phone: 1-800-234-1960  
e-mail: sve@siouxvalleyenergy.com  
Website: www.siouxvalleyenergy.com

In accordance with Federal civil rights law and U.S. Department of Agriculture (USDA) civil rights regulations and policies, the USDA, its agencies, offices and employees, and institutions participating in or administering USDA programs are prohibited from discriminating on the basis of race, color, national origin, age or disability. Remedies and complaint filing deadlines vary by program or incident.

Persons with disabilities who require alternative means of communication for program information (e.g. Braille, large print, audiotape, American Sign Language, etc.) should contact the responsible Agency or USDA's TARGET Center at (202) 720-2600 (voice and TTY) or contact USDA through the Federal Relay Service at (800) 877-8339. Additionally, program information may be made available in languages other than English.

To file a program discrimination complaint, complete the USDA Program Discrimination Complaint Form, AD-3027, found on-line at [http://www.ascr.usda.gov/complaint\\_filing\\_cust.html](http://www.ascr.usda.gov/complaint_filing_cust.html), and at any USDA office, or write a letter addressed to USDA and provide in the letter all of the information requested in the form. To request a copy of the complaint form, call (866) 632-9992. Submit your completed complaint form or letter to USDA by:

- (1) mail: U.S. Department of Agriculture  
Office of the Assistant Secretary for Civil Rights  
1400 Independence Avenue, S.W.  
Washington, D.C. 20250-9410
- (2) fax: (202) 690-7442; or
- (3) email: [program.intake@usda.gov](mailto:program.intake@usda.gov)

**Sioux Valley Energy is an  
equal opportunity provider and employer.**

**Co-op Info (Continued)**

to capitalize this expense, the rate impact is minimal...just one third of one percent (0.33%) over the next 10 years.

As I already mentioned, the number one driver of your electric rates is power supply. Demand on the electric system during peak times can significantly impact the Co-op's monthly power bill. And you can play a role in reducing those costs with just a little bit of knowledge. We put together a video to try to explain the difference between energy and demand and show you how small changes in your daily life can make a big impact when it's done collectively with other members. You can find this video on our website.

Sioux Valley Energy is developing a peak demand rate pilot program that will be based on signals that notify members when the Co-op is entering into a peak demand time. The pilot has not started, so if you are interested let us know. We also have our Time of Use rate which provides a lower rate to members during non-peak times; with higher rates charged during peak demand periods which run from 7 a.m. to 10 a.m. and 4 p.m. to 9 p.m.

Members who own electric vehicles or use other electric technologies will often sign up for our Time of Use Rate as we incentivize battery charging during non-peak times. We get a lot of questions about the concept of beneficial electrification, which is much broader than just electric vehicles. Beneficial electrification may be a fairly new term but the concept is decades old. Sioux Valley Energy's electric water heater program is one of the original beneficial electrification programs. So is our electric heat program. We are now seeing more members switch to electric yard tools and even purchasing electric vehicles also known as EVs. For some reason, electric vehicles have become a political hot button. For us, it's just another electric technology that we need to plan for. Much like the adoption of cell phones and computers in years past. There are a handful of misconceptions out there about electric vehicles. We see those misconceptions on social media and on the internet which is why we set out to get the facts from Sioux Valley Energy's beneficial electrification expert in a video we put together for the meetings. That video is also on our website.

The final topic we discussed at our district meetings is safety. As a Cooperative we run radio and tv ads to remind people to be safe around electricity. We provide demonstrations at public events and visit schools to try to keep people safe. We implore people to simply look up and around before moving large equipment and to call 811 before they dig. Unfortunately, those messages are not being heard and we need your help. A safety video was developed and provided district meeting attendees vital information about staying safe around electrical facilities. This video, along with the other videos we showed at the meetings will be on our website at [www.siouxvalleyenergy.com](http://www.siouxvalleyenergy.com).

We hope this overview keeps you up to date on what is happening at your cooperative. As always, if you have any questions about this information, let me know at [tim.mccarthy@siouxvalleyenergy.com](mailto:tim.mccarthy@siouxvalleyenergy.com).

# Practicing Electrical Safety Inside and Outside the Home

Electricity is a vital resource South Dakotans depend on daily, but when used unsafely, the consequences can be costly and sometimes even deadly.

Many tragedies involve common items such as power outlets, appliances, power cords, power equipment and extension cords. Sadly, most of these deaths and injuries are preventable.

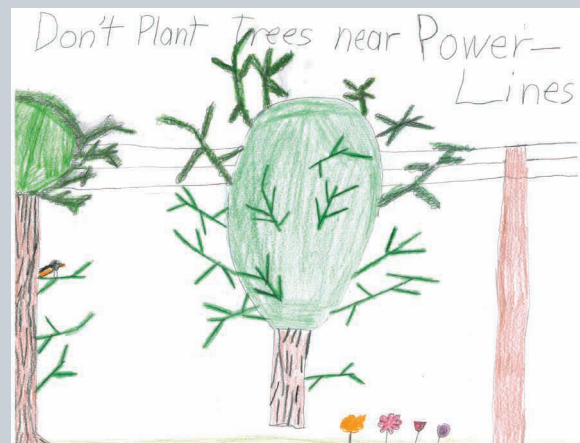
To help reduce electric safety casualties and injuries, South Dakota's electric cooperatives are dedicated to raising awareness of electric safety information to educate people of all ages on the dangers of electricity.

## Inside the Home:

- Inspect electrical cords often for broken connectors or fraying. Throw away any worn cords to eliminate the possibility of shock, short circuit or fire.
- Don't overload power outlets.
- The wattage of the bulbs you use in your home should match the wattage indicated on the light fixture. Overheated fixtures can lead to a fire.
- When trying to unplug something from an outlet, pull on the plug, not the cord.
- Keep in mind that turned off appliances are still connected to electricity until they are unplugged. Always unplug appliances before cleaning or repairing.
- Use extension cords only for short-term purposes, and make sure the cord is adequately suited for the amount of electricity it will be transferring.
- Turn off and unplug all portable electrical appliances, like hairdryers, irons and shavers, when you're finished using them.
- Be familiar with the location of your breaker box and make sure the switches are clearly labeled so you can shut off electricity quickly in the event of an emergency.
- Teach children never to put their fingers in electrical outlets and appliances.
- Keep appliances and cords away from children and use plug covers in outlets.

## Outside the Home:

- If there is a downed power line nearby, leave the area immediately and notify your cooperative or call 911. If others are around, let them know that they need to stay away.
- Teach children to stay away from power lines and substations and make sure they can recognize "Danger-High Voltage" signs.
- Never use electrical equipment near any wet areas, such as pools or ponds.
- Remember, electricity looks for the shortest, most direct path to ground. A ladder, pole or even a wet kite string touching a power line will give electricity a new, shorter path and if you are holding one of these items, you could become a part of that path.
- "Call Before You Dig." Dial 811 before starting a digging project, and workers will be sent to your home to mark utility lines in your yard. This service is free, and it has the potential to save your life.



## Power Line Safety

### Annette Tschetter, age 9

Annette Tschetter, age 9, offers a great safety tip for power lines. Planting trees near power lines can be dangerous and problematic. Annette is the daughter of Ryan and Elaine Tschetter, members of Whetstone Valley Electric based in Milbank, S.D.

Kids, send your drawing with an electrical safety tip to your local electric cooperative (address found on Page 3). If your poster is published, you'll receive a prize. All entries must include your name, age, mailing address and the names of your parents. Colored drawings are encouraged.

# SMOOTHIE SENSATION



## WAKE UP COFFEE SMOOTHIE

### Ingredients:

- 1 cup milk
- 1/8-1/4 cup instant coffee granules
- 1 envelope chocolate or vanilla instant breakfast drink mix
- 3 cups ice cubes

### METHOD

In a blender, combine all the ingredients except the ice. Blend until well mixed. Add the ice and blend until well mixed and slushy.

**Catherine Peterson**  
Viborg, S.D.

## STRAWBERRY SMOOTHIE

### Ingredients:

- 2 cups fresh strawberries, stemmed and halved
- 1 cup plain yogurt
- 1/2 cup ice cubes or chips
- 1/2 tsp. ground cardamom
- 1/4 tsp. ginger

### METHOD

In a blender, combine all of the ingredients. Blend on high speed until it has a smoothie texture. Makes two 12 ounce glasses.

**Dar Duncan**  
Milbank, S.D.

## MINT CHOCOLATE BREAKFAST SMOOTHIE

### Ingredients:

- 1 cup ice
- 1/2 medium avocado, peeled, pitted and chopped
- 1/2 cup frozen sliced banana
- 1/2 cup packed baby spinach leaves
- 1/2 cup reduced fat milk
- 1 tablespoon agave nectar
- 1/2 teaspoon Pure Vanilla Extract
- 1/4 teaspoon Pure Peppermint Extract
- 2 tablespoons finely chopped chocolate

### METHOD

Place all ingredients except chocolate in blender container; cover. Blend on high speed until smooth. Stir in chocolate. Serve immediately.

[mccormick.com](http://mccormick.com)

Please send your favorite recipes to your local electric cooperative (address found on Page 3). Each recipe printed will be entered into a drawing for a prize in December 2023. All entries must include your name, mailing address, phone number and cooperative name.

# Save Money and Energy



**Sheila Gross**  
Energy Services Specialist  
Contact Sheila Gross at [sheila.gross@siouxvalleyenergy.com](mailto:sheila.gross@siouxvalleyenergy.com) to learn more.

Check out these five ways to save money on your electric bill.

Looking to save even more? The Time of Use Rate (TOU) was developed for members who are seeking opportunities to have a direct impact on their electric bill through their conservation efforts and daily usage habits. Use SmartHub to manage and review your usage.

- 16.15 cents per kWh from 7-10 a.m. and 4-9 p.m.
- 5.84 cents per kWh any other time of the day (compared to regular rate of 10.26 cents)
- Members with electric heat will continue to receive the reduced heat rate
- The Time of Use rate is available for residential and general service accounts including former Alliant Energy customers and co-generation.

(Rates are subject to change) For more information on the Time of Use Rate, visit <https://www.siouxvalleyenergy.com/my-programs/time-of-use-rate>.

## SAVE MONEY & ENERGY THE SMART WAY

### 5 WAYS YOU CAN SAVE MONEY AND ENERGY WITH SMART HOME DEVICES.

**1 CURB HEATING & COOLING**  
Use a smart thermostat to schedule times you're away so you're not heating or cooling an empty home.

**3 KILL VAMPIRE POWER**  
Many appliances and electronics draw power even when turned off. Use smart plugs or power strips to cut all power.

**2 TURN LIGHTS OFF**  
Smart bulbs use 75% less energy, last 25 times longer and can be scheduled to turn off automatically.

**4 BUY ENERGY STAR**  
Appliances and electronics with the ENERGY STAR label will use less energy.

**5 GO TO SLEEP**  
Enable sleep mode or power management on your computer for even more cost savings.

**RE-ENERGIZING COST SAVINGS**  
Learn more at [YourCoopPower.com](https://www.YourCoopPower.com)



Scan this code to check out our rebates and incentives.

## SIGN ME UP TO WIN

Register me to win the EGO POWER+ snow shovel! Contest runs through March 28. Also, please contact me with more information about the topics indicated below.

Name: \_\_\_\_\_  
 Address: \_\_\_\_\_ City: \_\_\_\_\_ State: \_\_\_\_\_ ZIP: \_\_\_\_\_  
 Account #: \_\_\_\_\_ Phone #: \_\_\_\_\_ Email: \_\_\_\_\_

**Mail this form to:** Sioux Valley Energy, PO Box 216, Colman, SD 57017

- |   |  |  |   |
|---|--|--|---|
| <input type="checkbox"/> Heat Pump Rebate   | <input type="checkbox"/> Electric Vehicle Program      | <input type="checkbox"/> Smart Thermostat Rebate   | <input type="checkbox"/> Energy Saving Tips         |
| <input type="checkbox"/> Electric Heat Rate | <input type="checkbox"/> Time of Use Rate              | <input type="checkbox"/> Commercial/Ag LED Program | <input type="checkbox"/> Interlock Kit/Generator    |
| <input type="checkbox"/> Energy Audit       | <input type="checkbox"/> Third-Party Irrigation Rebate | <input type="checkbox"/> Commercial Heat Rebates   | <input type="checkbox"/> Marathon/HTP Water Heaters |
| <input type="checkbox"/> Loan Program       | <input type="checkbox"/> SmartHub Account Tool         | <input type="checkbox"/> Renewable Energy Credits  |   |



### McCarthy Elected

Sioux Valley Energy's CEO Tim McCarthy, center, was elected to serve as the next president of the National Touchstone Energy® Cooperatives Board of Directors. He succeeds Deb Mirasola of Dairyland Power, right. Also pictured Touchstone Energy Executive Director Jana Adams (left). Touchstone Energy Cooperatives is a national network of electric cooperatives across 45 states that provides research, communications resources, and employee training programs to help its member cooperatives better engage and serve their members.



## DISTRICT MEETINGS UPDATE MEMBERS

Sioux Valley Energy's District Meetings had a delayed start as the first meeting was rescheduled to March 28 due to weather, along with its District 2 meeting which is rescheduled for March 27.

ed regional growth and the impacts on the cooperative, demand and energy billing components and much more.

Non-contested elections will take place in districts five, six, seven, and nine.

Each meeting includes a complimentary meal and members who attend may also be eligible for a \$25 bill credit in lieu of a meeting registration gift.

Meeting topics included rates, cooperative power supply, project-



### Co-op Recognized

Sioux Valley Energy and its Operation Round Up Program was named the West Central Education Foundation's 2023 Business Supporter of the Year! Dr. Scott Mattheis, center, presented the award which was received by SVE's Brandon Lane and Lori George.



### Co-ops In Classroom

In February and March, SVE visited area elementary schools bringing the popular Co ops in the Classroom program to area fourth and fifth graders.

**plan ahead.**  
you never know what lies below...

Make safety a priority when digging. Before starting any digging project, call 811. It is a free service that will have buried public utilities marked on your property so that you can safely dig around them.

Learn more at [SafeElectricity.org](http://SafeElectricity.org)

Just call 811, or submit an online request at [Call811.com](http://Call811.com) at least few business days before you plan to dig.



# HOOKED ON FISHING

A Game, Fish and Parks employee consolidates fish in a raceway at McNenny State Fish Hatchery for loading and stocking.

## South Dakota Fish Hatcheries Meet Growing Demand

**Frank Turner**

frank.turner@sdrea.coop

Fishing guide Dave Spaid, of Pierre, has a passion for helping anglers pull fish out of South Dakota waters. When a customer catches a memorable monster along the banks of the Missouri River, Spaid knows he has had a successful day.

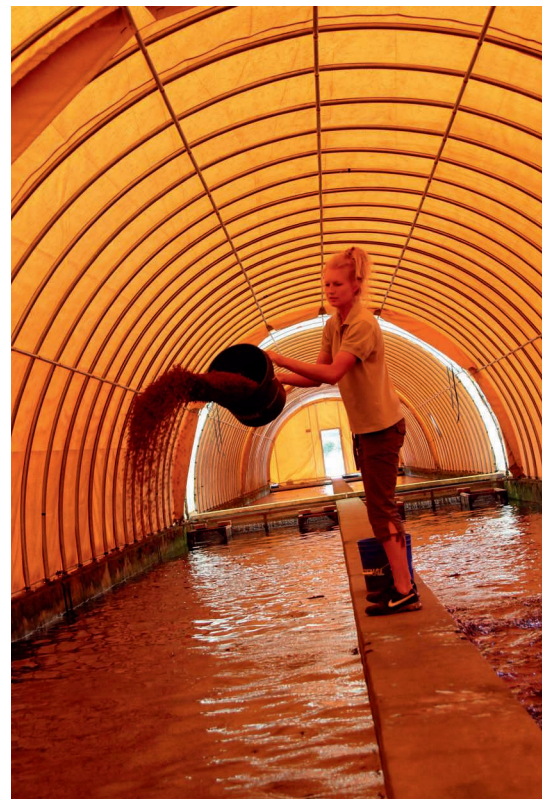
“I basically enjoy watching other people catch fish,” said Spaid, who has been a guide for fishermen from across the Midwest for more than 37 years.

Over the course of his long-standing career, Spaid says he observed more anglers on the water and improved fishing technologies and capabilities, yet fewer sizable fish. “There’s a growing amount of people out there that are fishing every day and having success,” said Spaid. “It puts a detrimental dent in our fishery and sometimes the fish just don’t have a

chance to grow to those bigger sizes.”

According to data from Game, Fish and Parks (GFP), fishing continues to be an important part of South Dakota’s outdoor heritage, confirming Spaid’s suspicions. And while fishing guides, like Spaid, have earned a living by taking fish out of the water, managers of fish hatcheries have taken on the responsibility of putting new fish back in.

Fish Hatcheries administrator Mike Barnes said GFP is being proactive in the development of its three hatchery locations to meet the needs of South Dakota’s anglers. Recent improvements to South Dakota’s three hatcheries located in



Regular feedings help bolster fish before their introduction to South Dakota lakes and rivers.



Spearfish, Rapid City and Waubay have significantly improved the state's abilities to produce and rear mass quantities of fish – everything from walleye to rainbow trout to largemouth bass – for stocking across the state.

The fish produced at these state hatcheries can even bolster South Dakota's larger fisheries, and without them, there would be significantly fewer fish to catch. In 2022, GFP and other entities stocked a total of 66 million fish, including 19 different species, in 138 lakes and streams in South Dakota. Over 60% of the walleye fisheries in South Dakota depend on stocking, and walleye stocking is increasing in Lake Oahe, South Dakota's largest reservoir. Other fisheries, like those for Chinook salmon, rainbow trout, and paddlefish, only exist because of hatcheries.

So how does the state manage to raise millions of fish? When raising walleye, hatcheries collect and fertilize fish eggs collected during the spawning season in the spring. The eggs incubate in upwelling jars, which circulate fresh water and gently roll the eggs. When the eggs hatch,

the small fry are either stocked directly into lakes or kept for further growth in ponds or newly installed re-circulating aquaculture system (RAS) tanks.

Due to the recent addition of RAS technology in 2019, Barnes said it is now possible to grow more fish and different species of fish to sizes never before possible. "Anglers are going to feel a huge impact from what we have done with these new systems, even as soon as this summer," said Barnes. "We are increasing small walleye production, and will be stocking bass at 10 inches or bigger, bluegills at eight inches, and muskies at 16 inches or longer – we've never had the opportunity to grow and stock these species of fish at these sizes before. This is all happening at the same time as increased numbers of walleyes returning from traditional rearing ponds and trout production at record levels. I'm extremely proud of the people I am privileged to supervise."

Rearing fish in RAS is complex, and Barnes compares the process to a factory. The scale of production is massive and energy intensive. Barnes is also the

manager of McNenny Hatchery in rural Lawrence County. As a co-op member of Butte Electric, Barnes said the McNenny hatchery in Spearfish has had consistent support from its local co-op to keep the operation rolling.

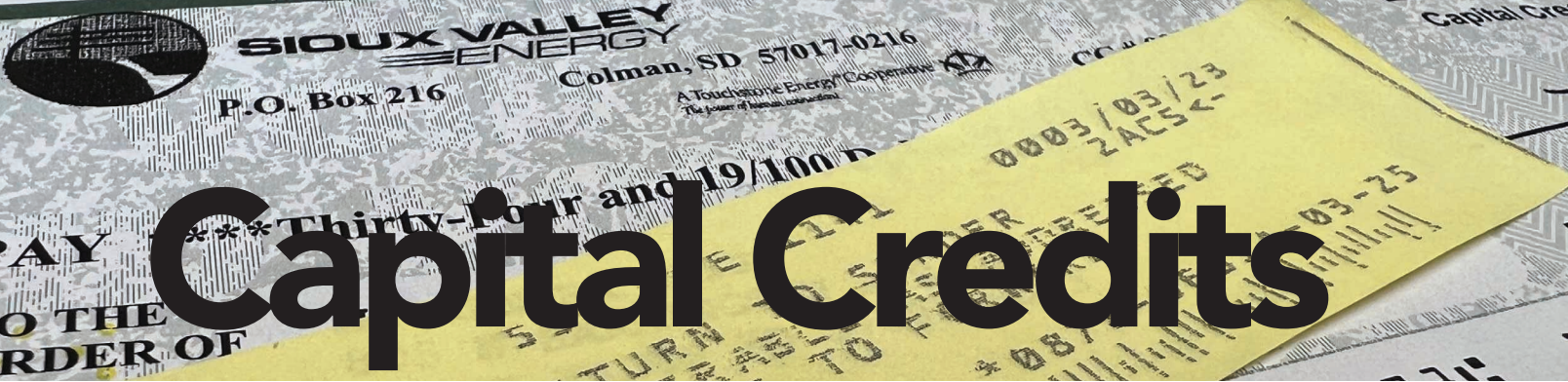
"There is no way we could do what we do without reliable electricity," said Barnes. "It's just a tremendous blessing for us to have Butte Electric as our provider. They are just so good to work with and so responsive and helpful."

The state is keen on keeping the momentum rolling. In fact, GFP has plans for a new hatchery facility on SDSU's campus. Increasing production, increasing rearing efficiencies, saving money, developing student interns, and enhancing fisheries education, are all reasons for the new facility. Barnes estimates that the project could be completed within the next three years.

"Keep an eye out for new projects because they are happening and underway," he said. "And at the end of the day, it's all about maximizing the satisfaction of our customers, South Dakota's anglers."



Game, Fish and Parks uses trucks equipped with livewells to stock fish directly into South Dakota fisheries across the state.



# Capital Credits

**Each year when Sioux Valley Energy mails capital credit checks to former members, some are returned because the person has moved.**

**Jody Lebahn, Lead Accountant II**

jody.lebahn@siouxvalleyenergy.com

These checks were sent in December 2022 to members from 1999, 2000, and 2021. If you know any of the people on this list, please tell them to contact Sioux Valley Energy at 800-234-1960 or email jody.lebahn@siouxvalleyenergy.com to claim their capital credit check.

**ALASKA TO FLORIDA**

Patrick, Darin ..... Anchorage, AK  
 Anderson, John V. & Nancy A. .... Kodiak, AK  
 Elfrink, Zane, ..... Ozark, AL  
 Deatherage, Brigid A. .... Apache Junction, AZ  
 Steenholdt, Muriel..... Casa Grande, AZ  
 Vanleeuwen, Richard & Cynthia . Gilbert, AZ  
 Jamison, Mark..... Marana, AZ  
 Aranson, Jerry..... Mesa, AZ  
 Hanson, Chad M. .... Phoenix, AZ  
 Christofferson, Jonathon..... Tucson, AZ  
 Murray, Wayne..... Vail, AZ  
 Lindquist, John & Laura ..... Beale AFB, CA  
 JMS Electric,

%Jeffrey M Sheets.....Lancaster, CA  
 Mox, Richard ..... San Diego, CA  
 Cox, Christopher.....Sunnyvale, CA  
 Wieckert, Dave G. & Mrs.

Estates % Linda Cormack ..... Edwards, CO  
 Evenson, Jerry..... Englewood, CO  
 Stack, Audrey..... Fort Collins, CO  
 Storey, Ed ..... Nederland, CO  
 Appeldorn, Barbara B.....Fort Myers, FL

**IOWA**

Lantz, Dean & Frances..... Carter Lake, IA  
 Doherty, John P. .... Des Moines, IA  
 Knight, Gregory ..... Inwood, IA  
 Jester, Bryce ..... Le Mars, IA  
 Visser, Duane.....Marshalltown, IA  
 Dekruif, James S. & Elizabeth Orange City, IA  
 Denhartog, Mark J. .... Oskaloosa, IA  
 Johnson, Steve..... Runnells, IA  
 O'Connor, Michael J. & Amy K ..Sioux City, IA  
 Field, Matthew C. ....Webster City, IA

**SOUTH DAKOTA**

**ABERDEEN**

Chelmo, Jed  
 Jark, Nancy K.

**ARLINGTON**

Halstead, Lorn L.  
 Smith, Brad & Sara

**ASTORIA**

Bender, Shawn & Laura  
 Skorseth Const,  
 %Lyle Skorseth

**AURORA**

Sanders, Paul & Hilary

**BALTIC**

**IDAHO TO MICHIGAN**

Morrell, Kevin ..... Boise, ID  
 Gaalswyk, Brian..... Post Falls, ID  
 Tuff Lugg Equipment

%John White..... Streator, IL  
 Lilly, Russ E. & Ginni .....Evansville, IN  
 Hartman, Russ..... Greene, ME  
 Jolly, Dean..... Lake City, MI  
 Bell, Richard & Michelle D. .... Mason, MI

**MINNESOTA**

Davies, Roger & Betty ..... Albert Lea, MN  
 Hedlund, Chris & Traci..... Albert Lea, MN  
 Schreiber, Jason & Nicole..... Albert Lea, MN  
 Husen, Kenneth E. .... Alexandria, MN  
 Kinsley, Jessica..... Blooming Prairie, MN  
 Mohror, Carole, AKA Carole

P. Anderson..... Brooklyn Park, MN  
 Hughes, Denise..... Brownton, MN  
 Akkerman, Daniel ..... Dellwood, MN  
 Anderson, Matthew & Jodell Eagle Lake, MN  
 Prairie Partners Inc.,

%Richard G Wiebe .....Eden Prairie, MN  
 Ford, Rena G..... Edgerton, MN  
 Menning, Bob ..... Edgerton, MN  
 Vandam, Harry..... Edgerton, MN  
 Ermer, Mark,

Area Fish Headquarters. Fergus Falls, MN  
 Hanson, Thomas L.

& Carrie L..... Fergus Falls, MN  
 Raymon, Mark..... Hills, MN  
 Siever, Robert ..... Ivanhoe, MN  
 Martinson, Craig ..... Jasper, MN  
 Mahlke, Reed ..... Lakeville, MN  
 Thoreson, Arvid.....Luverne, MN

**BRUSCHER, Cole**

Law, Larry  
 Long, K O & Dorothy,  
 C/O Keith Long  
 Olson, Amanda R.

**BERESFORD**

Schartz, Lynn M.

**BIG STONE CITY**

Marxen, Duane

**BRANDON**

Bakker, Larry  
 Black, James  
 Bornhoft, Adeline  
 Bowar, Roman & Jan

Cromwell, Tim ..... Minneapolis, MN  
 Nelson, Rachel..... Minneapolis, MN  
 Krumm, Michael R.

and Deseree..... Moorhead, MN  
 Radeck, Jess & Michele ..... Moorhead, MN  
 Johnson, Mark A.

and Jeanne M..... Northfield, MN  
 Haas, Della ..... Pipestone, MN  
 Hunter, Roszela G..... Pipestone, MN  
 Koob, A.J. .... Pipestone, MN  
 Baartman, Michael ..... Rochester, MN  
 Gostonczik, Mike & Michelle. Rochester, MN  
 Oachs, Dean R. & Sarah C..... Rochester, MN  
 Schneider, Todd & Michelle Rosemount, MN  
 Isenberg, Kevin..... Russell, MN  
 Petersen, D. Valerie ..... Ruthton, MN  
 Claussen, F.W. .... Saint Cloud, MN  
 Rupp, Doug ..... Slayton, MN  
 Holman, Shawn & Mary F. Walnut Grove, MN

**MISSOURI**

Chambers, Michael & Eva Knob Noster, MO  
 Dempsey, Ron & Rhonda..... Liberty, MO  
 Renken, Darleen E. .... Osage Beach, MO  
 Zimmer, Mel & Jodi L..... Saint Peters, MO  
 Wichhart, Robert D.

& Venita J. .... Webb City, MO

**NEBRASKA**

Hoffman, Donna..... Falls City, NE  
 Pugsley Trust, %United Farm

& Ranch Mgmt..... Norfolk, NE  
 Boyda, James ..... Omaha, NE  
 Kieffer, James ..... Omaha, NE  
 Knudson, Chrystal L. .... Omaha, NE  
 Thompson, Jeff & Jennifer ..... Omaha, NE

**NEVADA TO PENNSYLVANIA**

Patterson, Sean & Tara..... Las Vegas, NV  
 Nichols, Timothy P..... Pine Bush, NV  
 Kimball, Curtis & Audrey .....Raymond, NH  
 Wadhams, Richard A.

and Elizabeth A..... Albuquerque, NM  
 Walsh, Cynthia A. .... Gallup, NM  
 Wilkens, William F. .... Huntersville, NC  
 Mitzel, Daryl ..... Pinebluff, NC  
 Miller, Becky..... Middletown, OH  
 Pike, Jonathan & Dalene.. Broken Arrow, OK  
 Bird, Todd M. & Debbie..... Molalla, OR  
 Bell, William F. & Sally D. .... Pendleton, OR  
 Hipp, Stephen A. .... Gettysburg, PA  
 Gordon, Daniel..... Wellsboro, PA

**Brown, Shaun W. & Staci L.**

Buchanan, Mark  
 Burg, Steve  
 Campbell, Michael D.

& Sandra  
 Crawford, Nathaniel  
 De Witte, Lisa A.

%Carol Mason Stevicks

De Witte, Scott & Lisa  
 Duncan, Ardyce  
 Foster, Carole  
 GNL Electronics  
 Hieronimus, Heather  
 Howard, Douglas & Gloria  
 Johnston Properties,  
 %AB Management  
 Jones, Joseph & Nichole  
 Kanak, Dee,  
 %Karen Janssen  
 Miller, Pamela  
 Nelson, Michael & Leigh  
 Onnen, Jerome & Barbara  
 Perry, Margaret  
 Ponto, Esther  
 Scott, Janet  
 Smith, David W.  
 Turf & Trail  
 Westcott, Mark J.  
 & Gena M.

**BROOKINGS**  
 Braley, Mary  
 Chapin, Chris  
 Fox, Julie  
 Gilpin, Jeff  
 Grayson, David,  
 %D&T Property Mgmt  
 Gustafson, Jarrod  
 Hallan, Bruce A.  
 Hammond, Ross  
 Hays, Charles A.  
 & Penny Powers  
 Heitkamp, Jennifer  
 Kabrud, Ruth  
 Kinnaman, Joanne  
 Larson, Eric  
 Lindsey, Barbara  
 Livingston, Charles  
 Loban, Todd E.  
 Mammenga, Jesse  
 McAdaragh, Grant & Joy J.  
 Miller, Larry & Cathy  
 Ohlsen, Richard  
 Olson, Rachael  
 Pennock, William C.  
 & Diane K.  
 Person, Gary  
 Riedesel, Loyd A.  
 & Beverly A.  
 Rodriguez, Joe & Cindy  
 Safford, Jennifer  
 Schmuhi, Kelly  
 Schutjer, Gary  
 Scull, Sheri, L  
 Selleck, Sandy  
 Smit, Serena  
 Sosa, Oscar E. & Brenda D.  
 Stewart, Nathan  
 Strom, Lavonne,  
 AKA Cindy Paulson  
 Tanner, Rosey  
 Valentine, John R. & Doris  
 Vanveen, Bridgette  
 Vaske, Herb  
 Vernarsky, Jennifer  
 Warren, Andy

**BRUCE**  
 Roth, Sally

**BURBANK**  
 Verbeski, Don

**CANTON**  
 Wagner, Marlene

**CHESTER**  
 Devries, Jon & Karen

**CLARK**  
 Nelson, Darin

**COLMAN**  
 Combined Contracting  
 %Kevin Park  
 Hildebrandt, Elsie

**COLTON**  
 Takai, Yvonne

**CROOKS**  
 Fee, Carrie  
 Heikamp, Jeff & Kristi

**DEADWOOD**  
 Bouska, Todd & Beth

**DELL RAPIDS**  
 Heinrichs, Glen & Amy  
 Lynch, Brad  
 Schmidt, Clarence F.

**DE SMET**  
 Lee, Robert

**EGAN**  
 Anderson, Toby

**ESTELLINE**  
 Brown, Donald W.  
 Kalsbeck, Gerald  
 Pamanes, Victor

**FLANDREAU**  
 Gilbert, Helen  
 Johnson, Janet L.  
 Nielsen, Harold D. Ruby

**FREEMAN**  
 Tower, Dennis

**GARRETSON**  
 Rovang, Grace,  
 %Donna Bowar

**HARRISBURG**  
 Strong, Sherry L.

**HARTFORD**  
 Ashbach Milling  
 Brenneman, Howard  
 Deters, Joseph,  
 C/O Susan Deters  
 Ernst, Robert  
 Gates, Ronald L.  
 & Jolene C

Hartford Manor Inc., %Wil-  
 fred Jacobs  
 Kirschenmann, Ann  
 Pedersen, Krista  
 Phillips, Doris B.  
 Selken, Cindy  
 The Weekender Inc.,  
 %Dwight Decker

Wasson, James  
 Wetering, Jacki

**HOT SPRINGS**  
 Duckwitz, Jeremy & Krista  
 Thompson, Pat

**HUMBOLDT**  
 Ahlquist, James  
 Electronic Controls &  
 Security Innovations,

%Randall Davidson  
 Nyblom, James  
 Puthoff, Adam  
 Richter, Lori  
 Sorenson, Mary Jane

**HURON**  
 Madetzke, Paul E.

**LAKE PRESTON**  
 Holmes, John  
 Powell, Dennis E

**LENNOX**  
 Stien, Aric

**LYONS**  
 Lyons Township Hall  
 Treasurer

**MADISON**  
 Appelwick, Robert A.  
 Bierema, Theran

Bracken, Shirleyn,  
 %Lance Gruchow  
 Christoph, Richard  
 & Orinda  
 Clark, Warren  
 Dupree, Melissa  
 Geditz, Glen & Michelle  
 Grond, Steve & Greta  
 Henderson, Robert  
 Madison, Edward H.  
 Miller, Andrea  
 Miner, Kurt  
 Nicholson, Howard  
 & Marie  
 Persing, Craig  
 Petersen, Kristi  
 Piper, Shirley  
 Shepherd, Vicki  
 Uthe, Debra  
 Williams, Jay & Roxanna

**MARION**  
 Hyde, Dave

**MITCHELL**  
 Badker, Kenneth & Sue  
 Pearson, Tom  
 Weeks, Penny Jo

**MOBRIDGE**  
 Burgers, Ruth E.  
 Patel, Umesh

**OACOMA**  
 Jacobs, Randall  
 Viereck, Kelly

**PARKER**  
 Twamley, Roger

**PHILIP**  
 Tollefson, Mindy

**PIERRE**  
 Schiefen, David  
 Semmler, Aaron

**RAMONA**  
 Schramm, Greg

**RAPID CITY**  
 Church of Jesus Christ,  
 SDRC Mission - Bran-  
 don, Attn: Financial Sec  
 Fredrichsen, Dan  
 Hendricks Estate,  
 Norman,

C/O Nancy Hargens  
 Hennen, Wayne & Lisa  
 Schatzke, Chris  
 Tieszen, David L & Karen M.

**RENNER**  
 Bickett, Matt

**RUTLAND**  
 Weiland, Thomas C.

**SALEM**  
 Johnson, Timothy R.

**SIoux FALLS**

Bahr, Jason  
 Baun, Kenneth E.  
 Bentz, Jodi  
 Benz, Joan  
 Bortnem, Raymond J.  
 & Janet M.  
 Brower, Dan  
 Bruns, Kaye L.  
 Burchard, Chris  
 & Michelle  
 C&S Convenience Sales Inc.  
 %Curt & Sally Jorgenson,  
 DBA Daybreak Express  
 Carnahan, Holly  
 Carsrud, Laurie  
 Chafin, Jack & Brenda  
 Christensen, Tim  
 Claussen, Harlyne  
 Clement, Brian & Rachel  
 Cole, George  
 Colella, Ed  
 Corner, Eleanor,  
 AKA Eleanor Eaglebear,  
 %Leroy Eaglebear  
 Crawford, Jim  
 Dannen, Karen  
 Dejongh, Daniel & Janelle  
 Delpro Corporation, %Ger-  
 ald A Johnson  
 Dempsey, Michael W.  
 Denomme, Brian  
 Depola, Rick & Christina  
 Dixon, Vernon & Shari  
 Downey, Paul W. &  
 Therese M.  
 Drews, Mitchell  
 Dunger, Amaryllis  
 Eagan, Margaret  
 Eastridge Mall  
 Eberts Construction  
 Eggers, Carol  
 Ektniphong, Sagawatee  
 & Debra  
 Elrod, Gene  
 Fodness, Jan & Elizabeth  
 Frazer, Stephen J.  
 & Narcisa  
 Frederes, Matt  
 Frevik, Clair & Shirley  
 Gaddis, Glen & Michele  
 Gallegos, Juan  
 Garner, Robin  
 Gesinger, Mitchell L.  
 & Lisa  
 Great Western Bank  
 Grebner, Lloyce  
 Gunderson, Ralph & Betty  
 Hager, Jeff, DBA Hager  
 Construction

Hantke, Tonya  
 Harsma, Mike  
 Hartford Plaza Co, LLC,  
 %Midwest Property  
 Serv  
 Hartmann, Brad & Julie  
 Hatten, Todd L.  
 Hejl, Wesley E.  
 Hernandez, Diana  
 Hochstein, Shad & Penny  
 Hoffman, Daniel  
 Hohn, Jennifer K.  
 Irvine, Kerry L.  
 Jewell, Brenda  
 Johnson, Kevin L. & Valorie  
 Jones, Bart & Laurie  
 Jordheim, Dave & Karla  
 Jorgenson, Matthew  
 Karli, Tim  
 Kendrick, Denise  
 Knudson, James  
 Krokowski, Sara  
 Kruger, Darin  
 L A Communique  
 Lazer Marketing Inc.  
 Ron Lamberty  
 DBA Daybreak Express  
 Legrande, Randy  
 Levchenko, Yakov  
 Lynch, Steve & Roxanne  
 Mamey, Roger H.  
 & Sandra S.  
 Manke, Nikki  
 McClanahan, Patrick B.  
 McKnelly, Shane & Tyfany  
 Miller, Brian B. & Amy  
 Miller, Donald P  
 Miller, Shannon M.  
 & Donna M.  
 Moench, Laura  
 Moench, Mark  
 Monahan, Ray  
 Mortland, Tami  
 Moss, Delores  
 Mueller, Dennis  
 Nagorniuk Peter  
 Nelson, Jon  
 Neuharth, James  
 & Cynthia  
 Olson, Dawn  
 Olson, Deanna  
 Palmer, Pam K.  
 Pearson, Lyle W.  
 Pinkerman, Lynette  
 Rademacher, Chris  
 & Melissa  
 Rank, Terry & Tina  
 Reemtsma, Vernon  
 & Lavonne  
 Remmers, Shannon  
 Richmond, Colleen  
 Roberts, Theresa J.  
 Robinson, Tom & Lynn  
 Roozing, Lori  
 Rowland, Donald & Lena M  
 Sampson, Steve C. & Mary  
 Jo  
 Schaefer Kenneth R.  
 Schramm, Brian  
 Scofield, Scott  
 Sharpe, Steve  
 Shinaberger, Joseph J.



# MOVING STRUCTURES

A home is moved in Fargo, N.D., due to flooding.

## Reasons to Move and Methods to Get it Done

**Jocelyn Johnson**

[jocelyn.johnson@sdrea.coop](mailto:jocelyn.johnson@sdrea.coop)

You found your dreamhouse. It's affordable and everything you ever wanted. The catch? You must move it across town.

It's not an easy thing to do, but moving a complete structure from the past to its future home can be done and is done for the right reasons.

Milbank House Movers, Inc., located in Milbank, S.D., has been in business since 1965 and serves all of South Dakota, North Dakota, and the Mid-Western parts of Minnesota.

Josh Wendland from Milbank House Movers said, "The demand for moving structures remains high across all of our service area...we have multiple crews, that, at times, move multiple houses every week."

A house, sentimental barn or historical

church are all structures that people have moved in South Dakota. Sentiment, safety, time, cost, convenience, and restructuring could all be reasons why this occurs.

Throughout the United States,

intimidating structures are moved regularly – lighthouses, hotels, movie theatres, airport terminals, barges, ships, bridges, grain elevators, houses, libraries, transformers, draglines, and viaducts are a few examples.

"Relocating structures is the world's oldest and largest recycling industry," Wendland stated. "Why people move structures varies greatly, but a few of the most common reasons occur in a



Two buildings are moved from Augustana University campus due to expansion of the college athletics complexes.

vast state like South Dakota. People that would like a home built may have difficulty finding builders that will work in their parts of the state, or the local builders are simply booked out and cannot help in the timeframe that works for them.”

In these circumstances, ready-built companies offer pre-built homes that could be moved to the customer’s site and set it on their basement as if it were built there all along.

A homeowner wanting to upgrade homes in their current location while also wanting to make a profit over the home they currently live in, is another example to move a home. Out with the old and in with the new! This philosophy can be true with barns, buildings, garages, and other types of structures that are in the way of new opportunities, but still hold value.

Flooding is an additional reason why some in the Midwest may want to move their homes to higher ground. Wendland observed that structural movers have seen an increase in the number of requests to elevate houses permanently, so owners

would not have to pay for expensive flood insurance. This move would elevate the long-term value on their home.

“We also work with numerous historical societies to help preserve historic structures, trains, churches, hotels, and schoolhouses by moving them to historical society grounds where they can be saved for future generations to learn from and enjoy,” Wendland stated. “We like to say, Moving the Past to the Present for the Future!”

## Things to Consider When Moving a House

Despite professionals making it look somewhat easy, getting from Point A to Point B may not be that simple. It requires constructive planning and forethought. The following are just a few considerations to take before any structure is moved.

1. Size – the bigger the house, the more expensive it is to move.
2. Obstacles – trees, overhead utility lines, bridge weight limitations, traffic signals, and railroad crossings should be considered

with every route taken.

3. Price of moving the house
4. Distance of the move
5. Cost of the new lot
6. Cost to purchase the house or building
7. Fees associated with moving overhead utilities, tree trimming, and any permits or inspections required to move and place the house
8. Fees associated with disconnecting all of the current utilities, HVAC, and electrical and plumbing systems
9. Remodeling costs
10. Financing costs

Moving a structure can be an exciting process if done correctly. It’s saving a piece of history from destruction or putting in something new without the headache of waiting. Whatever the reason behind the move, the ability to do it is astounding. Homes can be saved, history can be preserved, and future options are made more available.



A home is moved due to flooding near Waubay, S.D.

# CAPITAL CREDITS

& Arlis Jean  
 Short, Cindy & Ed Rogic  
 Skoglund, Phil  
 Smart, Rod  
 Smith, Marion  
 Sontag, Christoph E.  
 Spars, Wayne  
 Steele, Kenneth W.  
 Tate, Doris  
 TCI of Watertown,  
 %Steve Schirber Gm  
 Thomas, Elva M.  
 Tiger Academy Martial Arts,  
 %John P Wallace  
 Tople, Heath  
 Tordoff, Ron  
 Tru-Fit Golf, %Bruce C Ritter  
 Unzelman, Dan  
 Van Laar, G M  
 Vanderhoff, Duane  
 Vandermaten, Chad  
 Vanderplaats, Marion  
 Vankempen, Rob & Julie T  
 Vis, Scott  
 Volden, Mark & Kathy  
 Waite, Ryan F.  
 Waltman, John L. & Carol  
 Wendt, Tod M. & Laura A.

Wilber, John  
 Wilson, Cathy  
 Wommack, David  
**SISSETON**  
 Vanpursem, Kendall & Nanci  
**SPEARFISH**  
 Miller, Steve  
 Orth, Shayne  
 Suiter, Kevin & Cindy  
**STRATFORD**  
 Zimmerman, Gail  
**SUMMERSET**  
 Devries, Lowell  
**TABOR**  
 Osborn, Harold & Genevieve  
 C/O Rev Wm Osborn  
**TEA**  
 Beynon, Brett  
 Harsin, Misty  
 Hoek, Cheryl K.  
 Hughes, Kenneth O.  
 & Mildred  
 Johnson, Lawrence J.  
 Redenius, Leota  
 Walker, Terri  
**TRENT**

Dahlmeier, Viola  
**VALLEY SPRINGS**  
 Buchholtz, Kevin E.  
 %Bonnie Buchholtz  
 Smith, Stewart D.  
**VERMILLION**  
 Flaherty, Michael & Nichole  
**VOLGA**  
 Berkland, Evelyn  
 Falk, Mike  
 Johnson, Todd  
 Majeres, Loren  
**WATERTOWN**  
 Barger, Robin  
 Fonder, Pamela  
 Hanson, Jamie L. & Nicole  
 Nelson, Arleen  
**WORTHING**  
 Meyerink, Aimee  
 White, Phyllis Jean  
 Wietgreffe, Richard  
**YANKTON**  
 Anderson, Mark D.  
 Hieronimus, Gary  
 Walker, Tim & Samantha  
 Wright, Andrea

McLain, Jeff .....Newport, VT  
 Knodel, Kari .....Springfield, VA  
 Wise, Matthew K. & Daphnia A. Monroe, WA  
 Lehron, Michael .....Janesville, WI  
 Orwig, John W. ....Buffalo, WY  
**CANADA**  
 Kauenhofen, Richard .....Carbon, Alberta  
**SOUTH KOREA**  
 Grim, Joel & Dawn .....USA/South Korea

## TEXAS

Opheim, Charles .....Dallas, TX  
 Bernhard, Robert K. & Bertha C. Kerrville, TX  
 Cleveland, Cal .....Newark, TX  
 Bremseth, Carroll R. & Sharon .....Reno, TX  
 Bareiss, Warren & Lizah .....Sherman, TX

## UTAH TO WYOMING

Austin, Art .....St George, UT



Scan code to access the Sioux Valley Energy website where you can download the Cooperative Connections Card app for mobile devices.

## CO-OP CONNECTIONS® CARD

The Co-op Connections Card is a partnership between Sioux Valley Energy and local businesses! Each member received the Co-op Connections Card free in their January magazine. You get your Co-op Connections Card simply because you're a member of Sioux Valley Energy. Each month, we'll include a listing of businesses participating in the program. Below are businesses located in Arlington, Brandon, and Brookings:

### Arlington

Bits of Yesterday      Flowers by Betsy  
 Antique Mall

### Brandon

3 Degrees Infrared	Holiday Inn Express & Suites-Brandon
Sauna Studio	Jones Family Eyecare
Anytime Fitness	Love That Look
Brandon Ace	Rivers Edge
Hardware	Decorative
Brandon Golf Course	Concrete LLC
Brandon Pharmacy	Splitrock C-Store
Fit for Life	Sunshine Foods
Chiropractic, LLC	Taco John's
Harry Buck-Hegg Realty	Tailgator's
Heartland Funeral Home	Today's Family Dentistry
	Wilde Prairie Winery

### Brookings

The Automotive Service Center	The Optical Shop
b.beautiful hair lounge	Party Depot
Brookings Family Dentistry	Perry Electric Air Conditioning & Heating:
Cubby's Sports Bar & Grill	Powershop Gym:
Dakota Lux LED Lighting Solutions	Qdoba Mexican Grill
Hometown Service and Tire	Schoon's Pump N Pak
Martin Oil	Tee'd Off Golf Simulators
Midwest Glass, Inc.	The UPS Store: Young Door Service Inc



## EMPOWER

YOUTH LEADERSHIP

### STEP UP AND STAND OUT!

Leadership, learning, friendships and challenges. Energize your potential through the EmPOWER Youth Leadership Program!

This inspiring, interactive program will help you discover personal strengths, build & improve leadership skills, link up with peers & professionals, and explore career paths.

### TO APPLY:

The 12-month program is open to upcoming juniors who are ready to commit to fully EmPOWER themselves with fun, positive, open minds. Applications are available from your school counselor or on our website. Submit via email to [Empower@siouxvalleyenergy.com](mailto:Empower@siouxvalleyenergy.com).

[EMPOWERYOUTHLEADERSHIP.COM](http://EMPOWERYOUTHLEADERSHIP.COM)





**TELL US WHO  
POWERS YOU!**

We know our co-op community is filled with people making a difference. Let's celebrate them! Nominate a member or employee of your local Touchstone Energy® Cooperative who goes above and beyond. They could win up to \$3,000!

Nominate your local hero at  
[WHOPOWERSYOUCONTEST.COM](http://WHOPOWERSYOUCONTEST.COM)



## WHO POWERS YOU? Contest Nominations Sought

Nominations are now open for “Who Powers You,” a contest being hosted by Sioux Valley Energy and the region’s other Touchstone Energy® Cooperatives. The second annual “Who Powers You” contest seeks to highlight local figures who are making a difference in their communities.

“No one succeeds alone, and that is especially true in rural areas, where friends and neighbors in tight-knit communities support, encourage and inspire each other,” said SVE Vice President of Public Relations Carrie Vugteveen. “Those people don’t do it for the recognition, but they deserve to be recognized, and we’d like to help make that happen.”

Member-owners, employees, and citizens who live or work within the service territory of the region’s Touchstone Energy Cooperatives are eligible to be nominated. Nominations are currently being accepted through April 7, 2023. Three final winners will be selected by a panel of judges based on the impact that they have on the community. Weekly finalists will be announced and featured on *Keloland Living* starting March 9, 2023, and the three contest winners will be announced on *Keloland Living* on May 25, 2023.

The Who Powers You contest grand prize winner will receive a \$3,000 prize. A second-place winner will receive \$1,500, and the contest’s third-place winner will receive \$500.

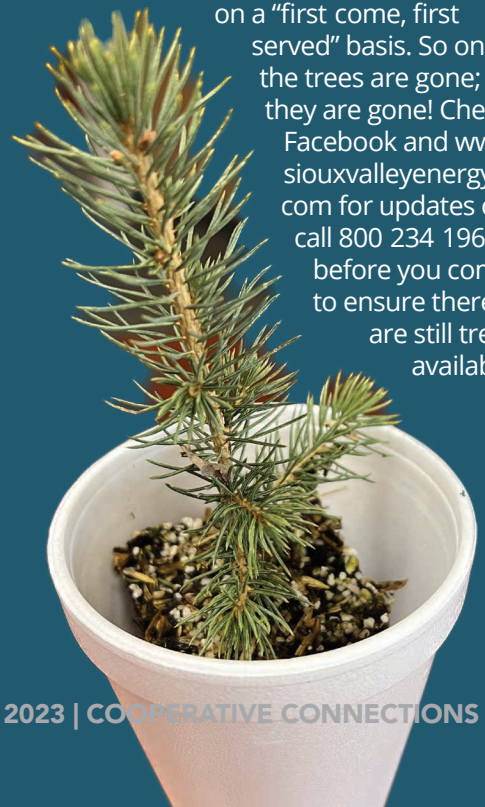
“As an electric cooperative, our services extend beyond delivering safe, affordable, and reliable power to our member-owners,” said Vugteveen. “The Who Powers You contest highlights the commitment of our co-op to the communities and member-owners that we serve. We know that our co-op community is filled with people making a difference.”

To learn more about the contest and to nominate someone in your community, visit [WhoPowersYouContest.com](http://WhoPowersYouContest.com).

## SVE to give out Bare Root Seedling Trees

Celebrate Earth Day 2023 by picking up a trio of small bare root seedling trees (hackberry, Amur maple, and Black Hills spruce) at Sioux Valley Energy. In recognition of Sioux Valley Energy’s commitment to community and caring for the environment objectives, the Cooperative will be providing 400 sets of bare root tree seedlings for members to plant. Members are eligible for three trees in total for as long as the trees last. The give away event (which is dependent upon weather, shipment dates, and availability) will take place at each of the Co op’s service centers in Colman, Brandon, Hartford, and Pipestone. Members can stop by one of the offices on Thursday, April 20 from 8 a.m. to 6 p.m.

If there are any extra trees available after the Thursday give away, those trees will be available Friday, April 21, during the hours of 8 a.m. and 3:30 p.m. Trees will be given out on a “first come, first served” basis. So once the trees are gone; they are gone! Check Facebook and [www.siouxvalleyenergy.com](http://www.siouxvalleyenergy.com) for updates or call 800 234 1960 before you come to ensure there are still trees available!





**April 22, 2023**  
**RiverRat Run**  
 Gavins Point Recreation Area  
 Yankton, SD  
 605-660-9483

To have your event listed on this page, send complete information, including date, event, place and contact to your local electric cooperative. Include your name, address and daytime telephone number. Information must be submitted at least eight weeks prior to your event. Please call ahead to confirm date, time and location of event.

**MARCH 31-APRIL 2**  
**70th Annual Hayes Play:**  
**Trouble in Tumbleweed**  
 Hayes Community Hall  
 Hayes, SD  
 605-280-6556

**APRIL 1**  
**Hill City Easter Egg Hunt**  
 9:45 a.m.  
 Visitor Information Center  
 Hill City, SD

**APRIL 1**  
**Lion's Club Easter Egg Hunt**  
 10 a.m.  
 City Park  
 Groton, SD

**APRIL 2**  
**Journey to the Cross**  
 1-3:30 p.m.  
 Blessed Redeemer Lutheran  
 Church  
 Brandon, SD  
 605-582-2396

**APRIL 2-4**  
**"The Psychic-a Murder**  
**Mystery of Sorts"**  
**Community Theater**  
**Performance**  
 Town Players Theater  
 Watertown, SD  
 605-280-6556

**APRIL 8**  
**East Dakota Chapter**  
**NWTF 30th Banquet**  
 Sioux Falls, SD  
 605-940-0702

**APRIL 8**  
**Easter Egg Hunt for Helping**  
**with Horsepower**  
 2 p.m.  
 Reclamation Ranch  
 Mitchell, SD

**APRIL 21**  
**Museum After Dark**  
 7 p.m.  
 Children's Museum of  
 South Dakota  
 Brookings, SD

**APRIL 21-22**  
**Junkin' Market Days,**  
**Spring Market**  
 W.H. Lyon Fairgrounds  
 Expo Building  
 Sioux Falls, SD  
 605-941-4958

**APRIL 22**  
**RiverRat Run**  
 8 a.m.  
 Gavins Point Recreation Area  
 Yankton, SD  
 (605) 660-9483

**MAY 6**  
**Consignment Auction**  
 Historic Prairie Village  
 Madison, SD  
 605-256-3644

**MAY 7**  
**Opening Day**  
 Historic Prairie Village  
 Madison, SD  
 605-256-3644

**MAY 20**  
**Buggy Museum Open House**  
 10 a.m.  
 Stockholm, SD  
 605-938-4192

**MAY 25**  
**Wine Walk**  
 5 p.m.  
 Downtown Businesses  
 Aberdeen, SD  
 605-226-3441

**MAY 27**  
**Back When They Bucked**  
**All-Day Rodeo**  
 9 a.m.  
 Days of '76 Event Complex  
 Deadwood, SD  
 605-717-7642

**Note: Please make sure to call ahead to verify the event is still being held.**